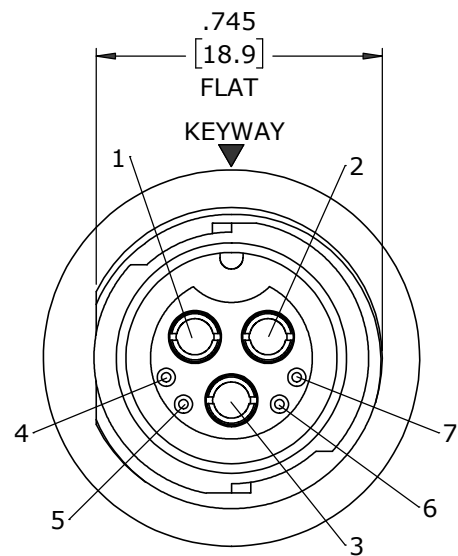
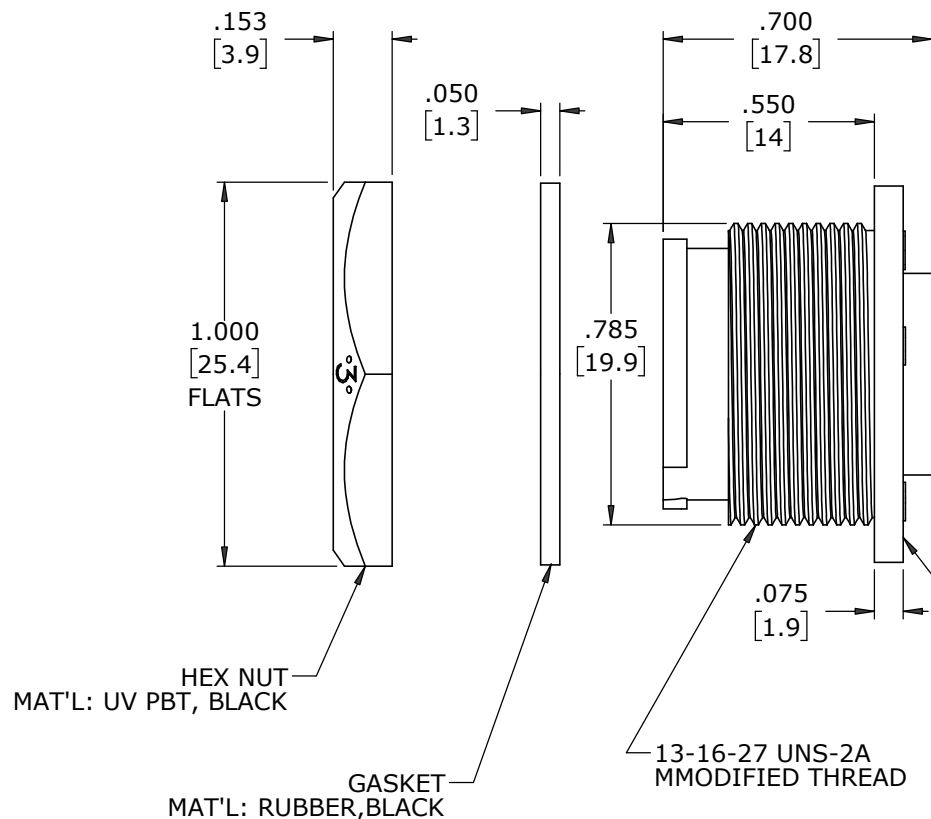


- NOTES:**
1. PARTS TO BE BULK PACKED.
2. CONTACTS ARE SUPPLIED LOOSE.
3. ALL DIMENSIONS ARE FOR REFERENCE ONLY EXCEPT WHERE NOTED WITH TOLERANCE.

**FACE VIEW**

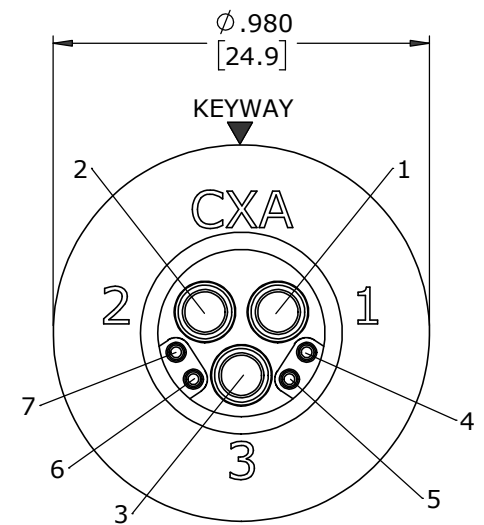
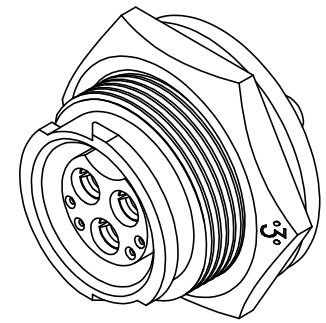
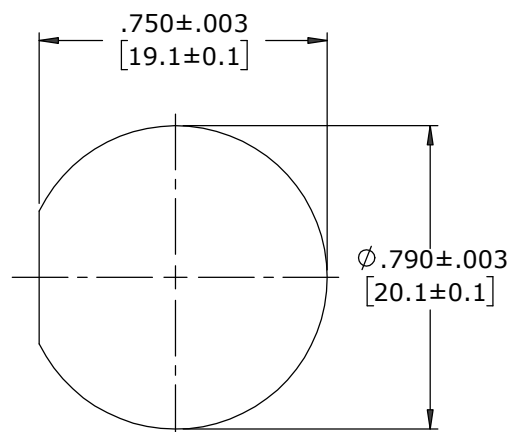
.170±.015
[4.3±0.4]
#12 CONTACT

.055±.015
[1.4±0.4]
#26 CONTACT

(3) #12 SOCKET CONTACT
CRIMP STYLE
MAT'L: COPPER ALLOY
GOLD PLATED

(4) #26 SOCKET CONTACT
CRIMP STYLE
MAT'L: COPPER ALLOY
GOLD PLATED

PANEL CONNECTOR, FEMALE
MAT'L: UV PBT, BLACK

**WIRE VIEW****RECOMMENDED
PANEL CUT-OUT**


DIMENSIONS IN BRACKETS [] ARE METRIC.

CUSTOMER APPROVAL

THIS DOCUMENT CONTAINS CONFIDENTIAL INFORMATION PROPRIETARY TO CONXALL CORPORATION. ANY REPRODUCTION, DISCLOSURE, OR USE OF THIS DOCUMENT /INFORMATION IS EXPRESSLY PROHIBITED UNLESS AUTHORIZED IN WRITING BY CONXALL CORPORATION.

APPROVED BY: _____
DATE: _____

RoHS COMPLIANT

A	MA	10-02-24	RELEASED PER PDR 20013-7			
	AB	03-22-21	DRAWING CREATED PER PDR 20013; P-20013-7			
REV.	INIT.	DATE	DESCRIPTION			
ALL INFORMATION ILLUSTRATED IS THE PROPERTY OF "CONXALL CORPORATION". UNAUTHORIZED DUPLICATION OR DISTRIBUTION OF THIS DOCUMENT IS PROHIBITED.			ORIG. DRAWN BY: AB DATE: 03-22-21		 601 E. WILDWOOD VILLA PARK, IL 60181	
ALL UNITS ARE IN FEET, INCHES, FRACTION OF INCHES AND DECIMALS.			CHECKED BY:			
▷ = CRITICAL CHARACTERISTIC FLAG PER SPEC. XXXX			APPROVED BY:		TITLE: PANEL CONNECTOR KIT (3) #12 + (4) #26 SOCKET CONTACTS, CRIMP MULTI-CON-X, WEATHER RESISTANT CUSTOMER: STANDARD PRODUCT	
			SCALE NTS	SIZE B	SHEET 1 OF 1	
FILE: W4B80-7SG-P-300			DIRECTORY: SLW		PART NUMBER: W4B80-7SG-P-300	
					REV A	