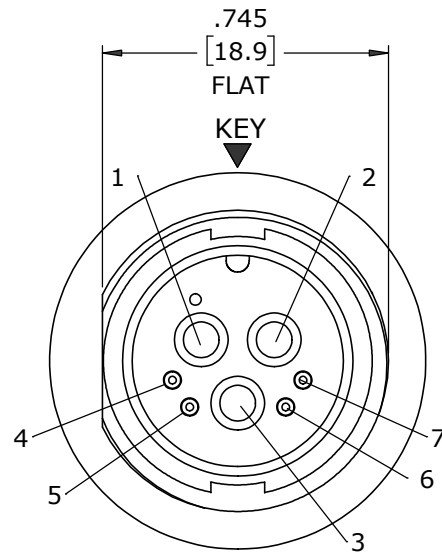
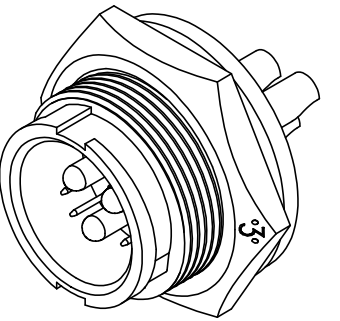
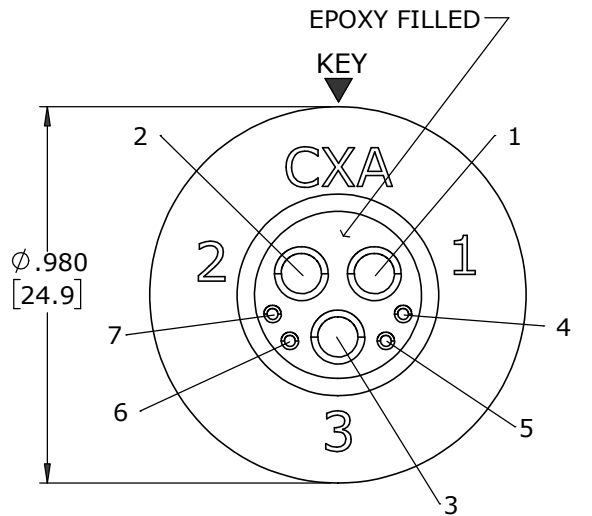
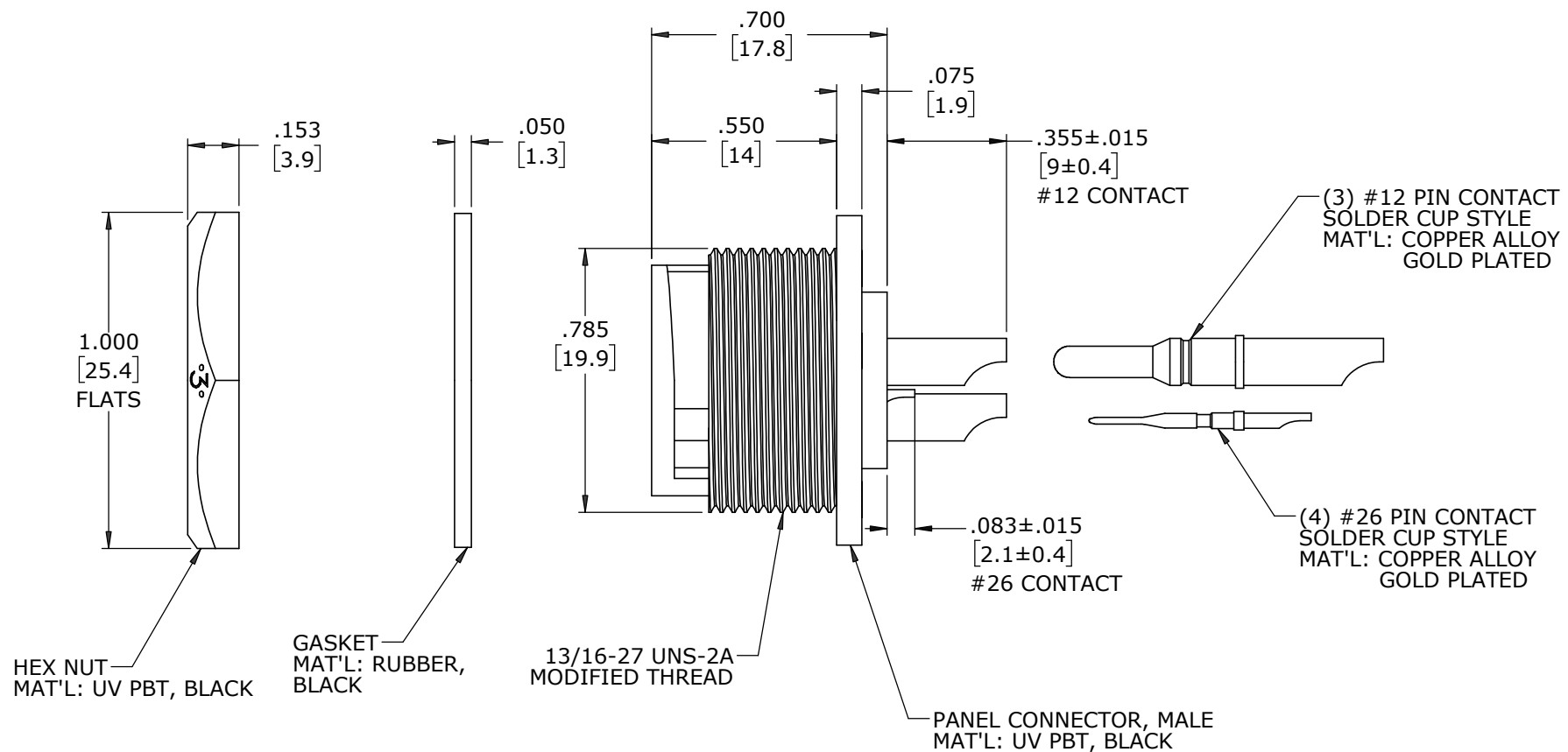
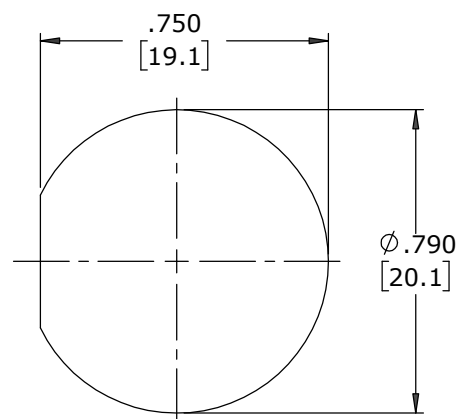


NOTES:

1. PARTS TO BE BULK PACKED.
2. SOLDER CONTACTS ARE PRESSED INTO CONNECTOR, WITH ALL CONTACTS FACING AWAY FROM KEY (DOWN).
3. REAR WELL FILLED WITH BLACK EPOXY.
4. ALL DIMENSIONS ARE FOR REFERENCE ONLY EXCEPT WHERE NOTED WITH TOLERANCE.

**FACE VIEW****WIRE VIEW****RECOMMENDED
PANEL CUT-OUT**
TOLERANCE ±.003 [0.1]**CUSTOMER APPROVAL**

THIS DOCUMENT CONTAINS CONFIDENTIAL INFORMATION PROPRIETARY TO CONXALL CORPORATION. ANY REPRODUCTION, DISCLOSURE, OR USE OF THIS DOCUMENT /INFORMATION IS EXPRESSLY PROHIBITED UNLESS AUTHORIZED IN WRITING BY CONXALL CORPORATION.

APPROVED BY: _____
DATE: _____

DIMENSIONS IN BRACKETS [] ARE METRIC.

RoHS COMPLIANT

A	MA	09-11-24	RELEASED PER PDR 20013-4	
	AB	09-03-21	CHANGED FROM 827-1PG-B TO 911-1PG; P-20013-4	
	AB	06-04-21	CHANGED TO ALL SOLDER CUPS FACING DOWN	
	AB	03-19-21	CREATED PER PDR 20013	
REV.	INIT.	DATE	DESCRIPTION	
ALL INFORMATION ILLUSTRATED IS THE PROPERTY OF "CONXALL CORPORATION". UNAUTHORIZED DUPLICATION OR DISTRIBUTION OF THIS DOCUMENT IS PROHIBITED.			ORIG. DRAWN BY: AB	DATE: 03-19-21
ALL UNITS ARE IN FEET, INCHES, FRACTION OF INCHES AND DECIMALS.			CHECKED BY:	
APPROVED BY:			TITLE: PANEL CONNECTOR KIT (3) #12 + (4) #26 PIN CONTACTS, SOLDER CUP MULTI-CON-X, WEATHER RESISTANT STANDARD PRODUCT	
SCALE: NTS			SIZE: B	SHEET: 1 OF 1
FILE: W4B82-7PG-3ES			DIRECTORY: SLW	PART NUMBER: W4B82-7PG-3ES
= CRITICAL CHARACTERISTIC FLAG PER SPEC. XXXX				REV A