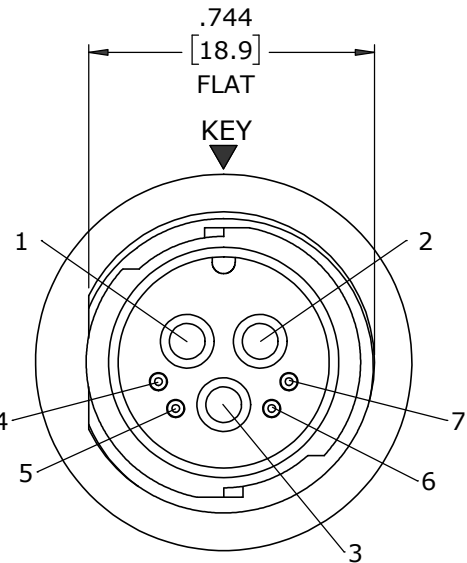
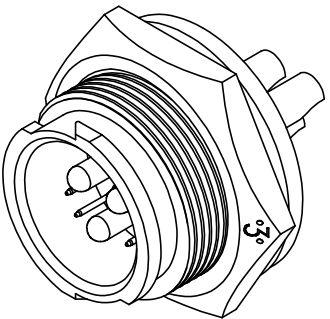
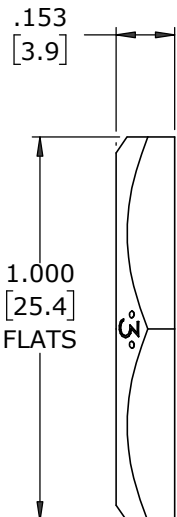


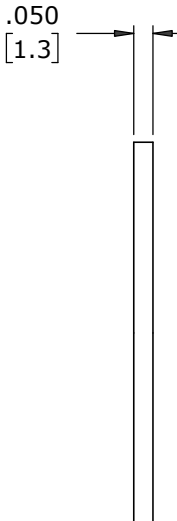
- NOTES:**
- 1. PARTS TO BE BULK PACKED.
 - 2. SOLDER CONTACTS ARE PRESSED INTO CONNECTOR, WITH ALL CONTACTS FACING AWAY FROM KEY (DOWN).
 - 3. REAR WELL FILLED WITH BLACK EPOXY.
 - 4. ALL DIMENSIONS ARE FOR REFERENCE ONLY EXCEPT WHERE NOTED WITH TOLERANCE.



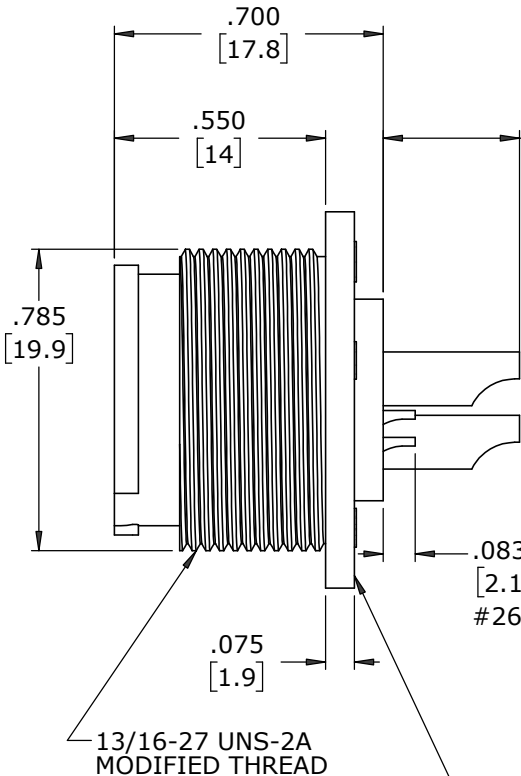
FACE VIEW



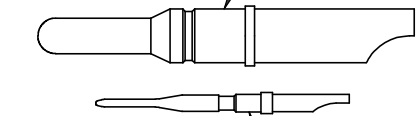
HEX NUT
MAT'L: UV PBT, BLACK



GASKET
MAT'L: RUBBER, BLACK



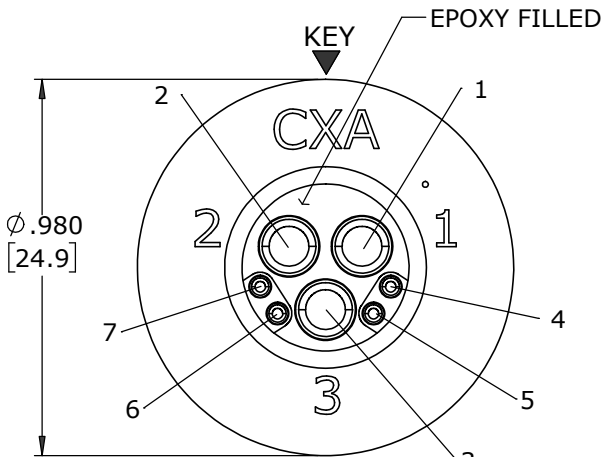
(3) #12 PIN CONTACT
SOLDER CUP STYLE
MAT'L: COPPER ALLOY
GOLD PLATED



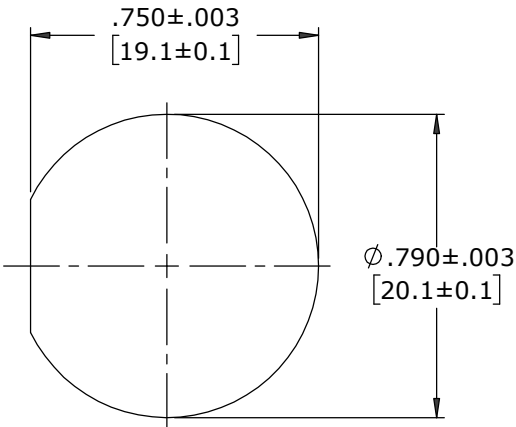
(4) #26 PIN CONTACT
SOLDER CUP STYLE
MAT'L: COPPER ALLOY
GOLD PLATED

.083±.015
[2.1±0.4]
#26 CONTACT

PANEL CONNECTOR, MALE
MAT'L: UV PBT, BLACK



WIRE VIEW



**RECOMMENDED
PANEL CUT-OUT**

DIMENSIONS IN BRACKETS [] ARE METRIC.

CUSTOMER APPROVAL	
THIS DOCUMENT CONTAINS CONFIDENTIAL INFORMATION PROPRIETARY TO CONXALL CORPORATION. ANY REPRODUCTION, DISCLOSURE, OR USE OF THIS DOCUMENT /INFORMATION IS EXPRESSLY PROHIBITED UNLESS AUTHORIZED IN WRITING BY CONXALL CORPORATION.	
APPROVED BY:	_____
DATE:	_____

RoHS COMPLIANT

A	MA	10-01-24	RELEASED PER PDR 20013-7	
	AB	09-03-21	CHANGED TO ALL SOLDER CUPS FACING DOWN; P-20013-7	
		03-22-21	CREATED PER PDR 20013	
REV.	INIT.	DATE	DESCRIPTION	
	AB		ORIG. DRAWN BY: AB	DATE: 03-22-21
			CHECKED BY:	
			APPROVED BY:	
			SCALE: NTS	SHEET: 1 OF 1
			FILE: W4B82-7PG-P-3ES	DIRECTORY: SLW
			TITLE: PANEL CONNECTOR KIT (3) #12 + (4) #26 PIN CONTACTS, SOLDER CUP MULTI-CON-X, W.R. INSTA-CLICK™	
			CUSTOMER: STANDARD PRODUCT	
			PART NUMBER: W4B82-7PG-P-3ES	REV A