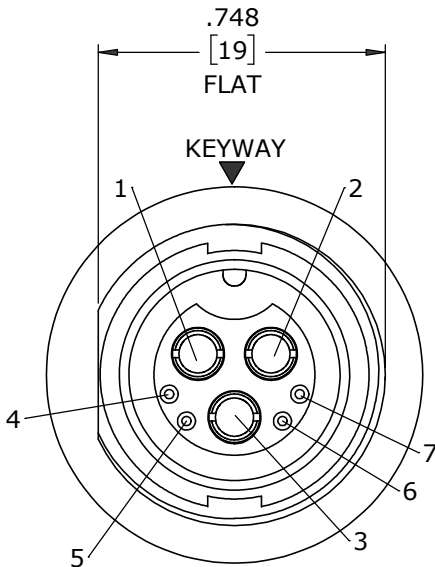
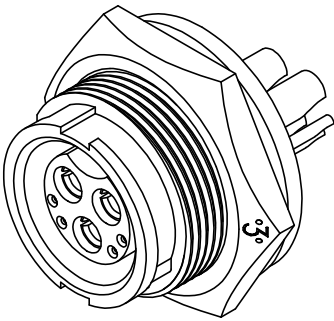
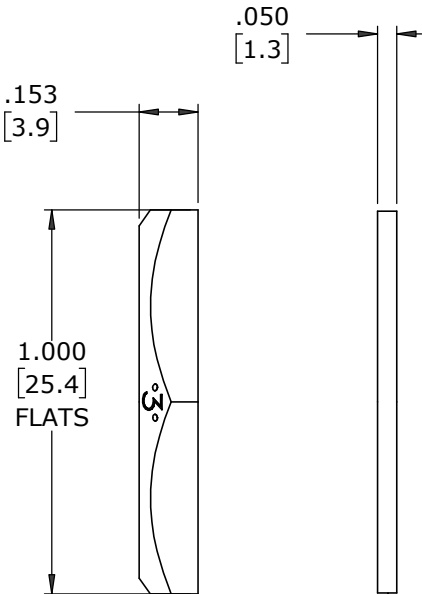


- NOTES:**
- 1. PARTS TO BE BULK PACKED.
 - 2. SOLDER CONTACTS ARE PRESSED INTO CONNECTOR, WITH ALL CONTACTS FACING AWAY FROM KEY (DOWN).
 - 3. ALL DIMENSIONS ARE FOR REFERENCE ONLY EXCEPT WHERE NOTED WITH TOLERANCE.

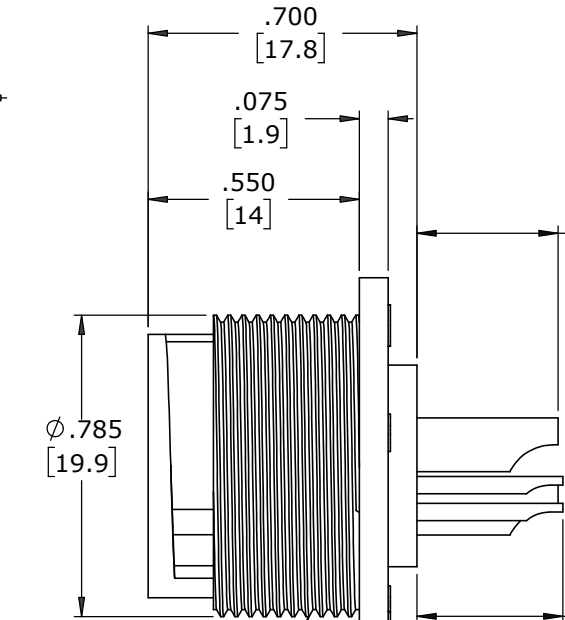


FACE VIEW

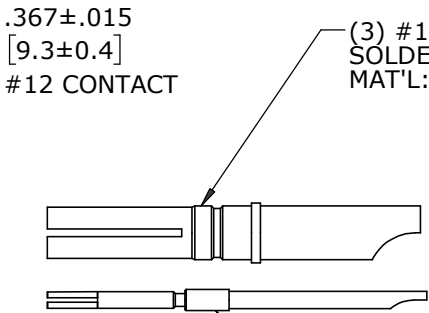


HEX NUT
MAT'L: UV PBT, BLACK

GASKET
MAT'L: RUBBER, BLACK



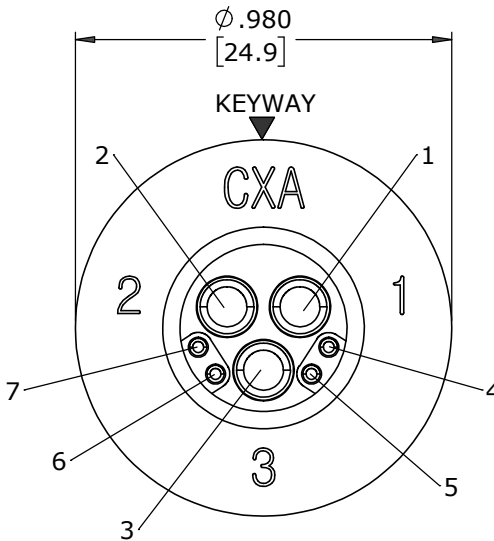
13/16-27 UNS-2A
MODIFIED THREAD



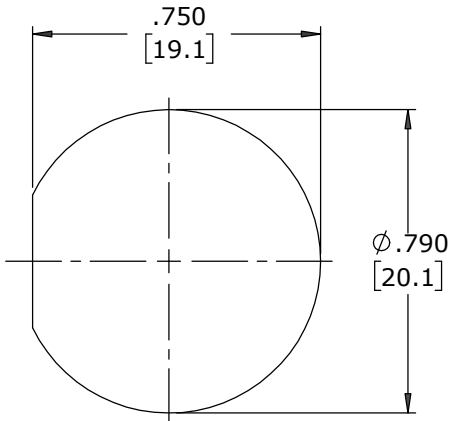
(3) #12 SOCKET CONTACT
SOLDER CUP STYLE
MAT'L: COPPER ALLOY
GOLD PLATED

(4) #26 SOCKET CONTACT
SOLDER CUP STYLE
MAT'L: COPPER ALLOY
GOLD PLATED

PANEL CONNECTOR, FEMALE
MAT'L: UV PBT, BLACK



WIRE VIEW



**RECOMMENDED
PANEL CUT-OUT**
TOLERANCE ±.003 [0.1]

DIMENSIONS IN BRACKETS [] ARE METRIC.

CUSTOMER APPROVAL			
THIS DOCUMENT CONTAINS CONFIDENTIAL INFORMATION PROPRIETARY TO CONXALL CORPORATION. ANY REPRODUCTION, DISCLOSURE, OR USE OF THIS DOCUMENT /INFORMATION IS EXPRESSLY PROHIBITED UNLESS AUTHORIZED IN WRITING BY CONXALL CORPORATION.			
APPROVED BY: _____			
DATE: _____			

RoHS COMPLIANT

A	MA	09-12-24	RELEASED PER PDR 20013-4	
	AB	06-07-21	CHANGED TO ALL SOLDER CUPS FACING DOWN; P-20013-4	
		03-22-21	DRAWING CREATED PER PDR 20013	
REV.	INIT.	DATE	DESCRIPTION	
ALL INFORMATION ILLUSTRATED IS THE PROPERTY OF "CONXALL CORPORATION". UNAUTHORIZED DUPLICATION OR DISTRIBUTION OF THIS DOCUMENT IS PROHIBITED.			ORIG. DRAWN BY: AB	DATE: 03-22-21
ALL UNITS ARE IN FEET, INCHES, FRACTION OF INCHES AND DECIMALS.			CHECKED BY:	
			APPROVED BY:	
			SCALE NTS	SIZE B
			SHEET 1 OF 1	
			FILE: W4B82-7SG-300	DIRECTORY: SLW
			TITLE: PANEL CONNECTOR KIT (3) #12 + (4) #26 SOCKET CONTACTS, SOLDER CUP MULTI-CON-X, WEATHER RESISTANT STANDARD PRODUCT	
			PART NUMBER: W4B82-7SG-300	REV A