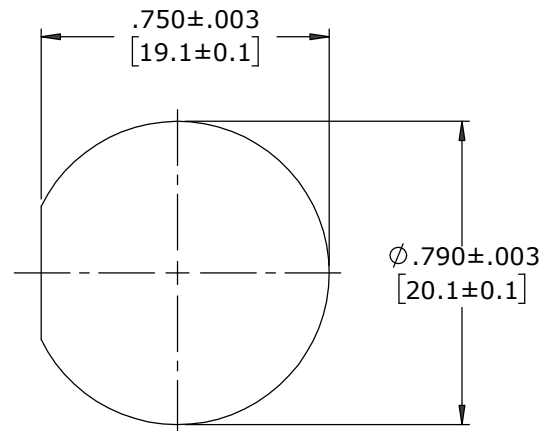
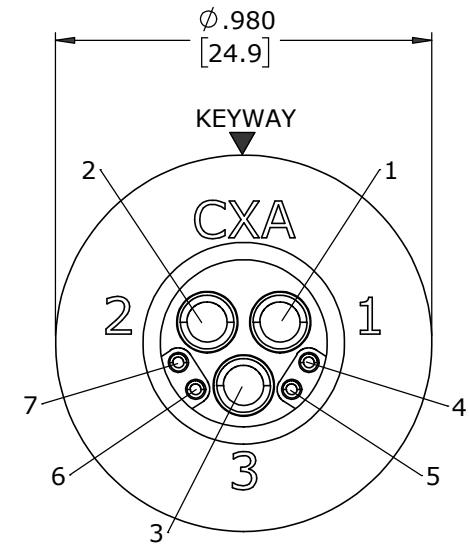
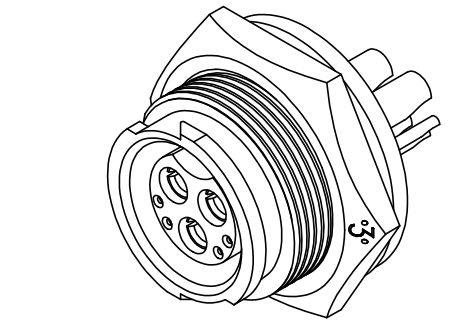
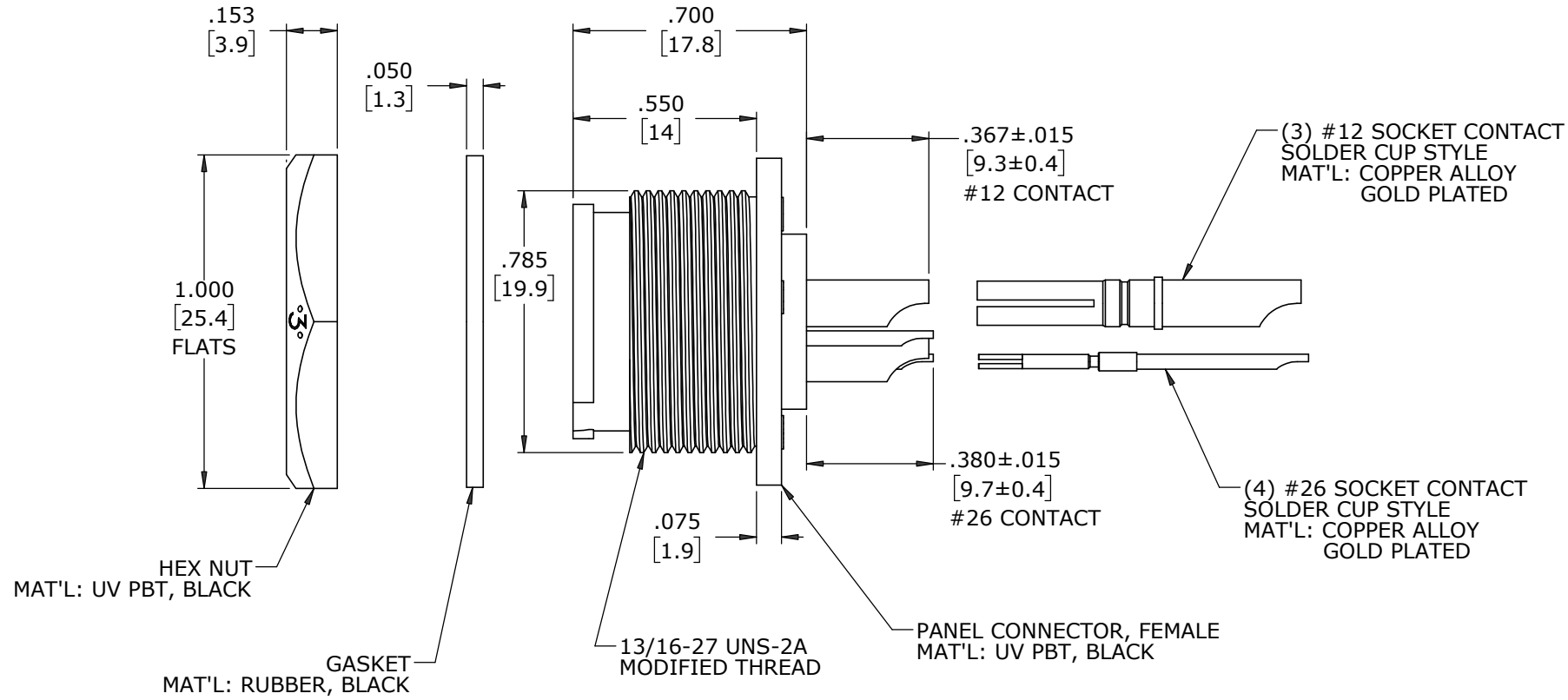
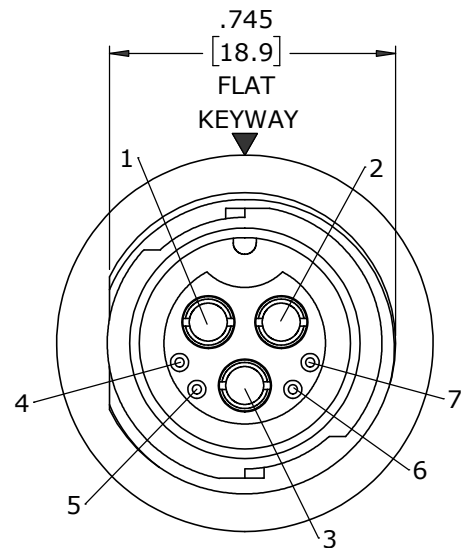


NOTES:

1. PARTS TO BE BULK PACKED.
2. SOLDER CONTACTS ARE PRESSED INTO CONNECTOR WITH ALL CONTACTS FACING AWAY FROM KEY (DOWN).
3. ALL DIMENSIONS ARE FOR REFERENCE ONLY EXCEPT WHERE NOTED WITH TOLERANCE.



DIMENSIONS IN BRACKETS [] ARE METRIC.

CUSTOMER APPROVAL

THIS DOCUMENT CONTAINS CONFIDENTIAL INFORMATION PROPRIETARY TO CONXALL CORPORATION. ANY REPRODUCTION, DISCLOSURE, OR USE OF THIS DOCUMENT /INFORMATION IS EXPRESSLY PROHIBITED UNLESS AUTHORIZED IN WRITING BY CONXALL CORPORATION.

APPROVED BY: _____
DATE: _____

RoHS COMPLIANT

A	MA	10-02-24	RELEASED PER PDR 20013-7	
	AB	09-03-21	CHANGED TO ALL SOLDER CUPS FACING DOWN; P-20013-7	
		03-23-21	DRAWING CREATED PER PDR 20013	
REV.	INIT.	DATE	DESCRIPTION	
	AB	03-23-21	ORIG. DRAWN BY: DATE: 03-23-21	
ALL INFORMATION ILLUSTRATED IS THE PROPERTY OF "CONXALL CORPORATION". UNAUTHORIZED DUPLICATION OR DISTRIBUTION OF THIS DOCUMENT IS PROHIBITED.			CHECKED BY:	
ALL UNITS ARE IN FEET, INCHES, FRACTION OF INCHES AND DECIMALS.			APPROVED BY:	
			SCALE NTS	SIZE B
			SHEET 1 OF 1	
			FILE: W4B82-7SG-P-300	DIRECTORY: SLW
			TITLE: PANEL CONNECTOR KIT (3) #12 + (4) #26 SOCKET CONTACTS, SOLDER CUP MULTI-CON-X, W.R. INSTA-CLICK™	
			CUSTOMER: STANDARD PRODUCT	
			PART NUMBER: W4B82-7SG-P-300	REV A

conxall
601 E. WILDWOOD VILLA PARK, IL 60181