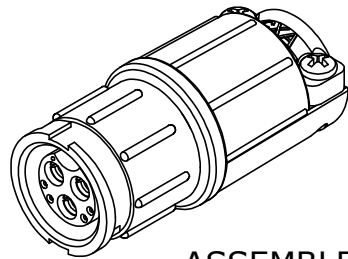


MFG. ENG.	APPROVED BY:	DATE:	QA	APPROVED BY:	DATE:

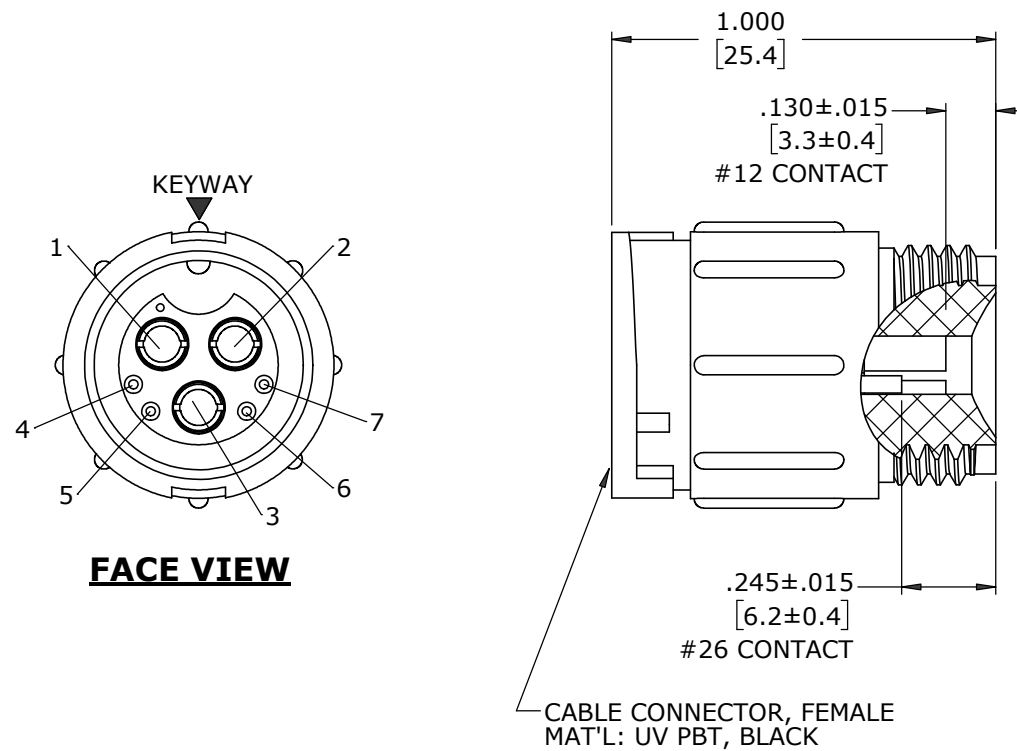
NOTES:

1. ALL PARTS TO BE BULK PACKED.
2. CONTACTS ARE SUPPLIED LOOSE.
3. ALL DIMENSIONS ARE FOR REFERENCE ONLY EXCEPT WHERE NOTED WITH TOLERANCE.



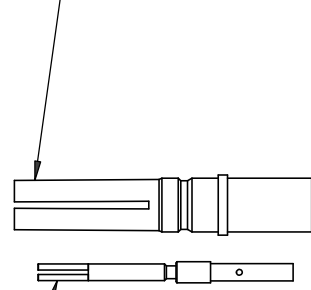
ASSEMBLED VIEW
FOR CUSTOMER REF ONLY

ASSY P/N	GROMMET SIZE
W5B80-7SG-535	GROMMET ID .375 [9.5] FOR CABLE OD .350-.400 [8.9-10.2]

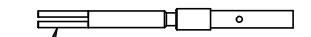


FACE VIEW

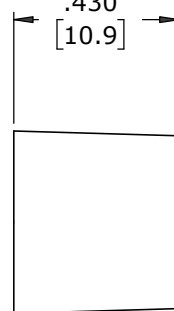
(3) #12 SOCKET CONTACT
CRIMP STYLE
MAT'L: COPPER ALLOY
GOLD PLATED



(4) #26 SOCKET CONTACT
CRIMP STYLE
MAT'L: COPPER ALLOY
GOLD PLATED



.430
[10.9]



GROMMET
MAT'L: RUBBER,
BLACK

.378
[9.6]

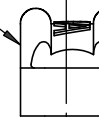


SLEEVE
MAT'L: PBT, BLACK

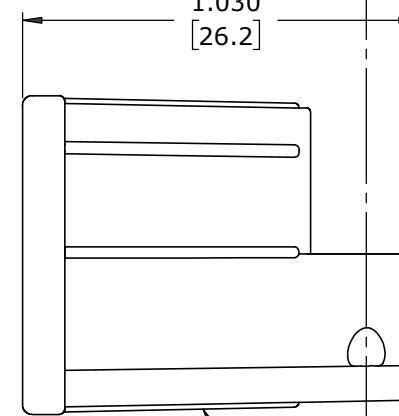
(2) #4 SCREW
MAT'L: STAINLESS STEEL



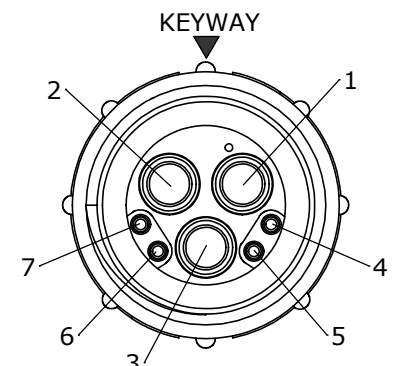
BACKSHELL STRAP
MAT'L: UV NYLON, BLACK



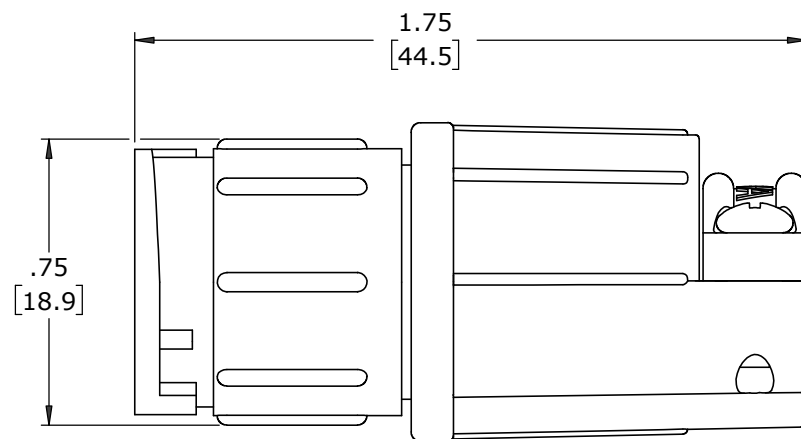
1.030
[26.2]



BACKSHELL
MAT'L: UV PBT, BLACK



WIRE VIEW



ASSEMBLED VIEW
FOR CUSTOMER REF ONLY

DIMENSIONS IN BRACKETS [] ARE METRIC.

CUSTOMER APPROVAL

THIS DOCUMENT CONTAINS CONFIDENTIAL INFORMATION PROPRIETARY TO CONXALL CORPORATION. ANY REPRODUCTION, DISCLOSURE, OR USE OF THIS DOCUMENT /INFORMATION IS EXPRESSLY PROHIBITED UNLESS AUTHORIZED IN WRITING BY CONXALL CORPORATION.

APPROVED BY: _____
DATE: _____

RoHS COMPLIANT

A	MA	09-18-24	RELEASED PER PDR 20013-5	
	AB	04-14-21	DRAWING CREATED PER PDR 20013; P-20013-5	
REV.	INIT.	DATE	DESCRIPTION	
<div>ALL INFORMATION ILLUSTRATED IS THE PROPERTY OF "CONXALL CORPORATION". UNAUTHORIZED DUPLICATION OR DISTRIBUTION OF THIS DOCUMENT IS PROHIBITED.</div>			ORIG. DRAWN BY: AB	DATE: 04-14-21
			<div>conxall</div> <div>601 E. WILDWOOD VILLA PARK, IL 60181</div>	
ALL UNITS ARE IN FEET, INCHES, FRACTION OF INCHES AND DECIMALS.				
<div>UNLESS OTHERWISE SPECIFIED TOLERANCES: 3 PLACE DECIMALS ±.005 ANGLES ±1° FRACTIONS ±1/16</div>			APPROVED BY:	
			TITLE: CABLE TO CABLE CONNECTOR KIT (3) #12 + (4) #26 SKT CONTACTS, CRIMP MULTI-CON-X, WEATHER RESISTANT STANDARD PRODUCT	
<div>▷ = CRITICAL CHARACTERISTIC FLAG PER SPEC. XXXX</div>			SCALE NTS	SIZE B
			SHEET 1 OF 1	CUSTOMER: STANDARD PRODUCT
FILE: W5B80-7SG-5XX			DIRECTORY: SLW	PART NUMBER: W5B80-7SG-5XX
			REV A	