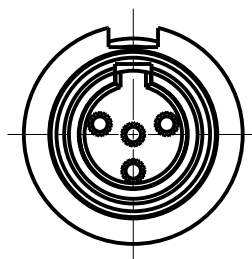
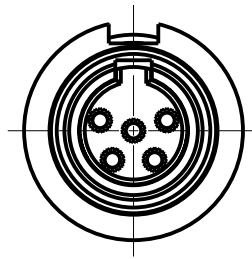


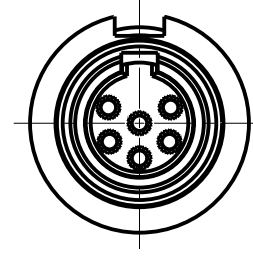
TBA03
3 PIN



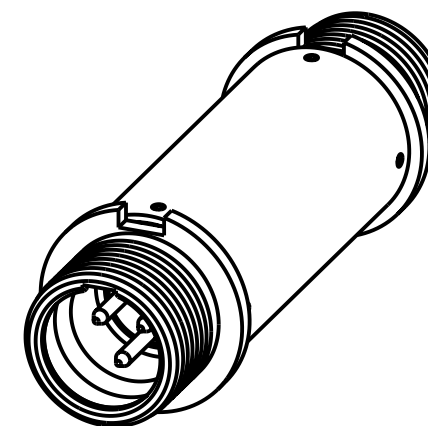
TBA04
4 PIN



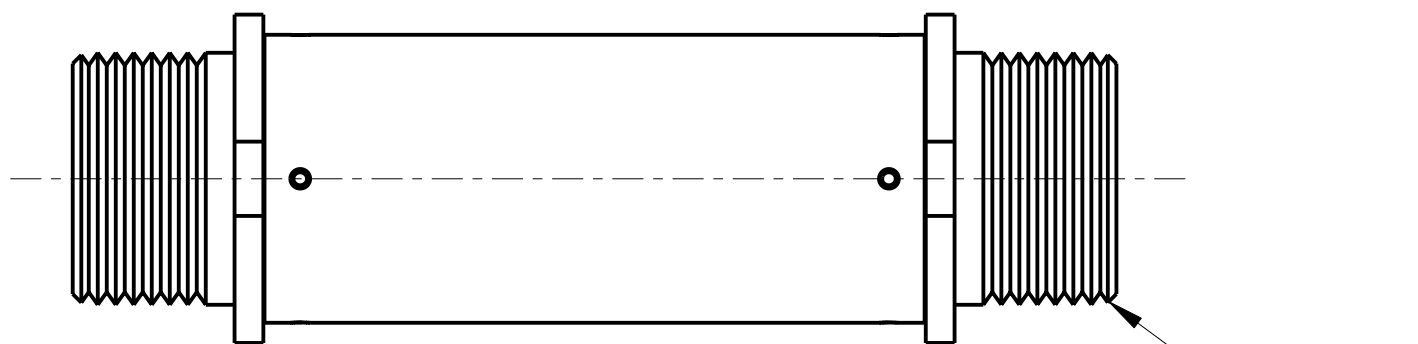
TBA05
5 PIN



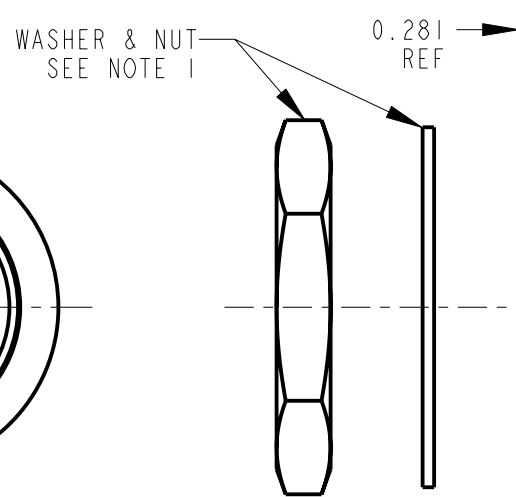
TBA06
6 PIN



SCALE 2:1

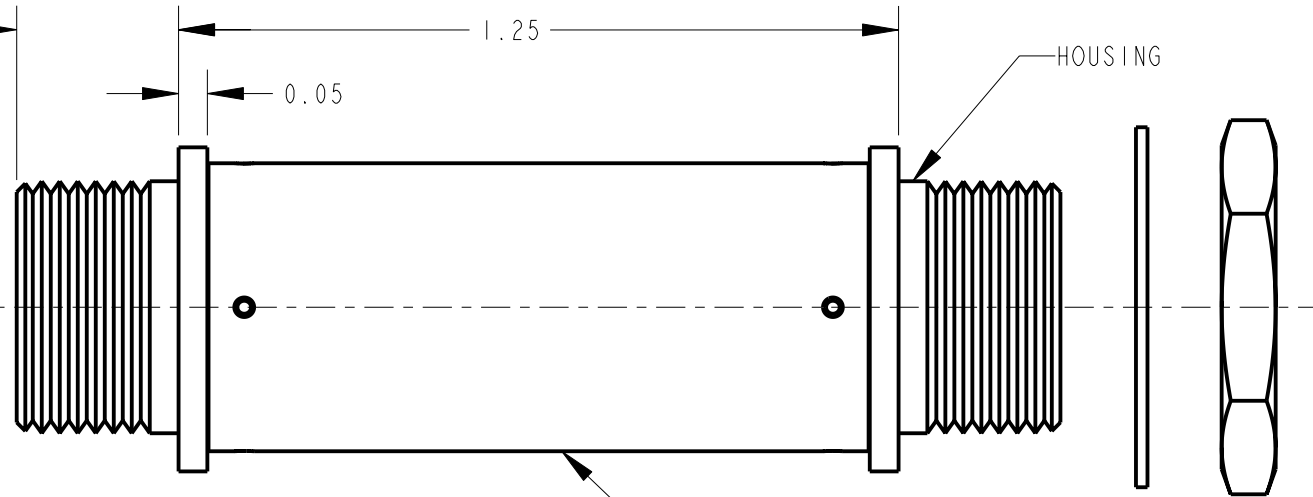


7/16-32
UNS-2A THREAD
2 PLACES
REF



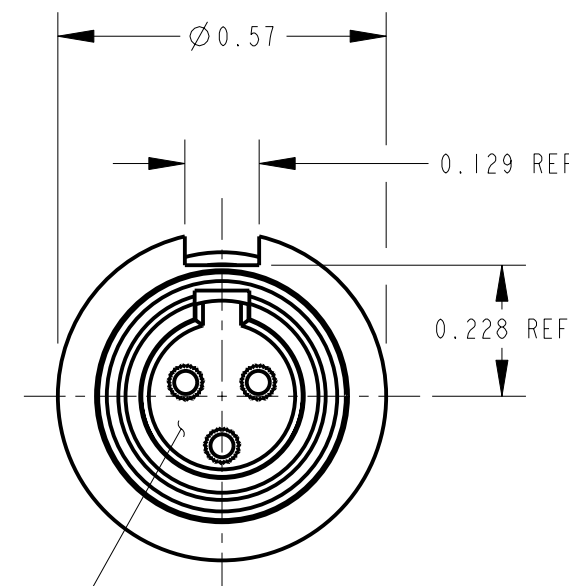
WASHER & NUT
SEE NOTE 1

0.281
REF



HOUSING

ADAPTER SHELL



INSERT & PIN
ASSEMBLY

CUSTOMER DRAWING

NOTES:

1. WASHER KIT K198 AND NUT KIT K197 SHIPPED UNASSEMBLED.
2. MATERIALS:
ADAPTER SHELL - STEEL, NICKEL PLATED
HOUSING - COPPER ALLOY, NICKEL PLATED
INSERT - THERMOPLASTIC, DARK BROWN
PINS - COPPER ALLOY, SILVER PLATED
WIRE - 26 GAUGE, PVC
WASHER & NUT - COPPER ALLOY, NICKEL PLATED
3. ADAPTER IS WIRED PIN 1 TO PIN 1, PIN 2 TO PIN 2, ETC.
4. MOUNTING HOLE: $\varnothing 0.453$
MAX PANEL THICKNESS: 0.25

REV	ECO NUMBER	DATE	BY	APVD
D	22914	11-30-11	TO	TJK
REVISIONS				

★ STAR SYMBOL DENOTES CRITICAL DIMENSION

UNLESS OTHERWISE SPECIFIED

1. ALL DIMENSIONS IN INCHES
- TWO PLACE DECIMALS ± 0.01
- THREE PLACE DECIMALS ± 0.005
- ANGLES $\pm 1^\circ$
- ALL DIA. CONCENTRIC WITHIN 0.005 T.I.R.
2. FEATURES ON THE SAME CENTERLINE
MUST BE ALIGNED WITHIN ± 0.002
3. REMOVE ALL BURRS

DO NOT SCALE DRAWING

THIS DRAWING DESCRIBES A DESIGN CONSIDERED PROPRIETARY IN NATURE, DEVELOPED AND MANUFACTURED BY SWITCHCRAFT INC. AND IS RELEASED ON A CONFIDENTIAL BASIS FOR IDENTIFICATION PURPOSES ONLY.

SIZE	WIDTH	MULT	LBS/M	TEMPER
FINISH				
SPEC No.			MATERIAL SPEC No.	
FIRST USED ON		SCALE 3:1		
DATE DRAWN	BY	CHKD	APVD	
30-Nov-11	TO	TO	TJK	
		11-30-11	11-30-11	
NAME			PART No.	
TINI-OG ADAPTER MALE TO MALE			TBA03-TBA06	
SHEET 1 OF 1				REV D

Switchcraft