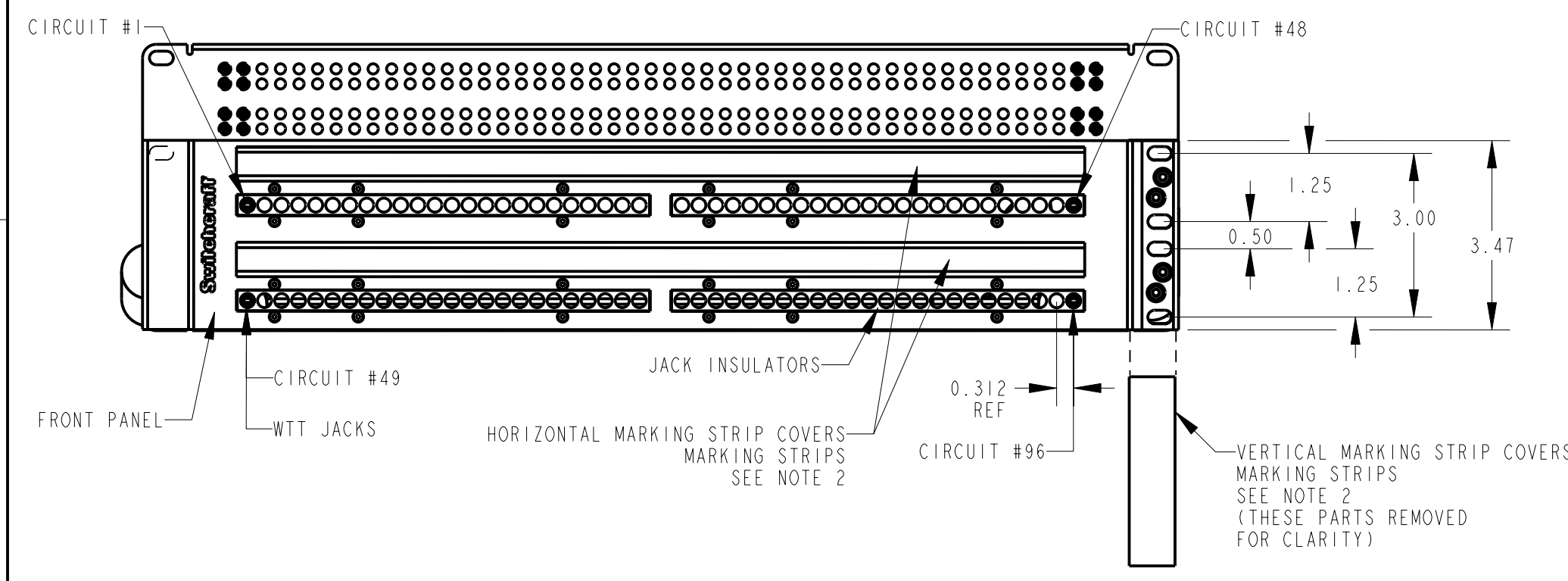


- NOTES:
- MATERIALS:
 FRONT PANEL - ALUMINUM, BLACK ANODIZE
 CHASSIS FRAME - STEEL, BLACK EPOXY PAINT
 TOP COVER - STEEL, BLACK EPOXY PAINT
 BACK FRAME - STEEL, BLACK EPOXY PAINT
 IDC HOUSING - THERMOPLASTIC, RED, ORANGE, BLUE, BLACK & WHITE
 IDC TERMINALS - SPECIAL COPPER ALLOY, TIN PLATED
 JACK INSULATORS - THERMOPLASTIC, BLACK
 JACK BUSHING - COPPER ALLOY, NICKEL PLATED
 JACK FRAME - STEEL, NICKEL PLATED
 - HORIZONTAL MARKING STRIP COVERS SHIPPED ASSEMBLED.
 HORIZONTAL MARKING STRIPS, VERTICAL MARKING STRIPS AND COVERS SHIPPED UNASSEMBLED.

CUSTOMER DRAWING



★ STAR SYMBOL DENOTES CRITICAL DIMENSION					THIS DRAWING DESCRIBES A DESIGN CONSIDERED PROPRIETARY IN NATURE, DEVELOPED AND MANUFACTURED BY SWITCHCRAFT INC. AND IS RELEASED ON A CONFIDENTIAL BASIS FOR IDENTIFICATION PURPOSES ONLY.				
UNLESS OTHERWISE SPECIFIED					SIZE	WIDTH	MULT	LBS/M	TEMPER
1. ALL DIMENSIONS IN INCHES - TWO PLACE DECIMALS ±0.01 - THREE PLACE DECIMALS ±0.005 - ANGLES ±1° - ALL DIA. CONCENTRIC WITHIN 0.005 T.I.R.					FINISH		MATERIAL SPEC No.		
2. FEATURES ON THE SAME CENTERLINE MUST BE ALIGNED WITHIN ±0.002					FIRST USED ON		SCALE 3:8		
3. REMOVE ALL BURRS					DATE DRAWN	BY	CHKD	APVD	
DO NOT SCALE DRAWING					26-Oct-99	MM	10-26-99	10-26-99	
REVISIONS					NAME				
					WIRED JACKFIELD				
					SHEET 1 OF 1				
					PART No. TTPH96K3NO				
					REV D				