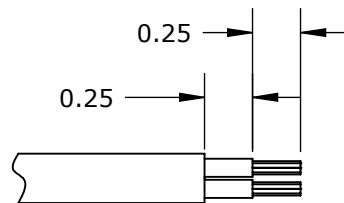
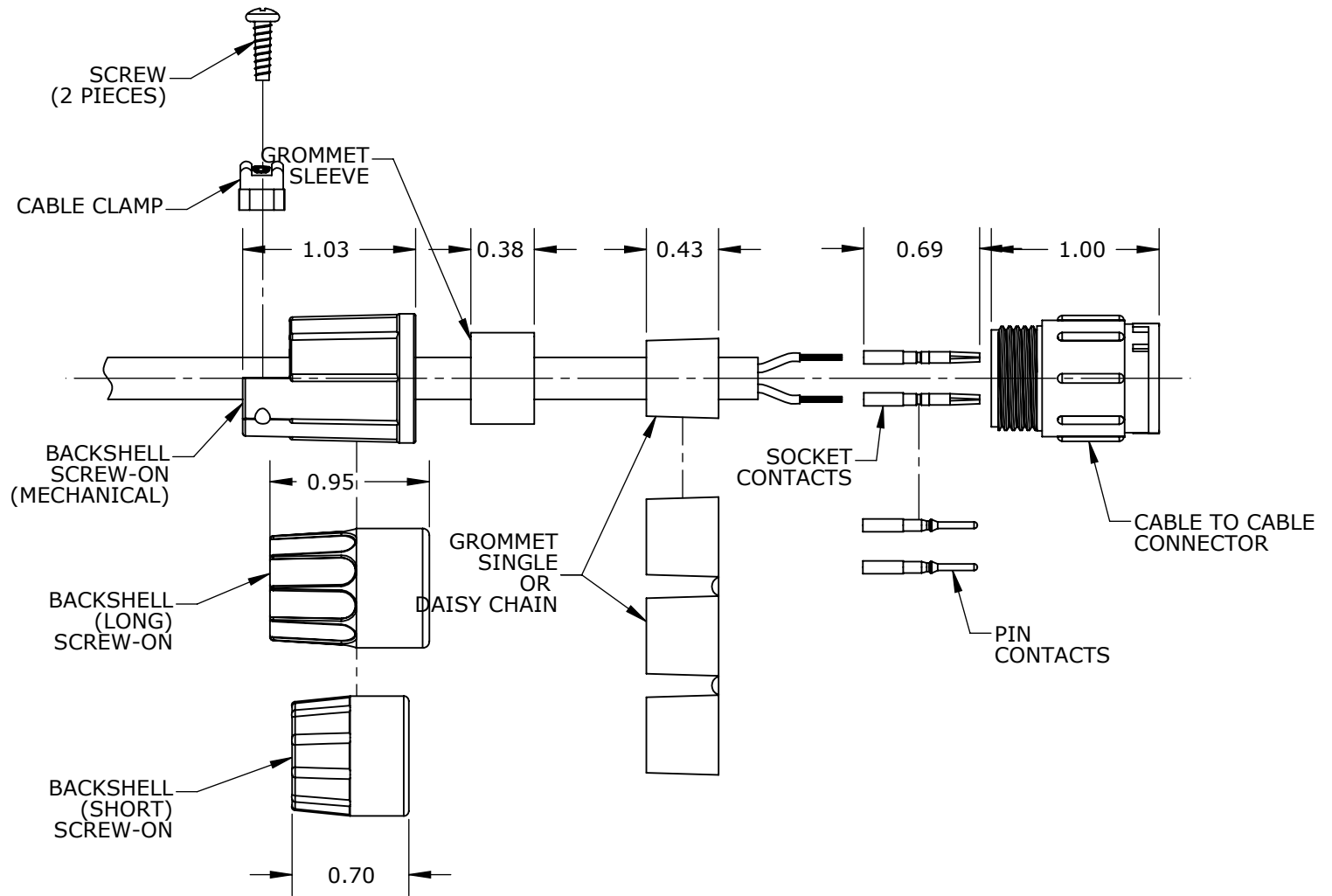


# INSTRUCTION SHEET

MULTI-CON-X SERIES

CABLE TO CABLE CONNECTOR



RECOMMENDED STRIPPING LENGTH

NOTES:  
1. ALL DIMENSIONS ARE FOR REFERENCE ONLY.

A	BZ	04-22-09	DRAWING CREATED PER DOR 09-1367KL
REV.	INIT.	DATE	DESCRIPTION
CHECKED BY:			
APPROVED BY:			
FILE:	LAB-0013	SHEET	1 OF 1

**CONXALL**

601 E. WILDWOOD VILLA PARK, IL 60181