

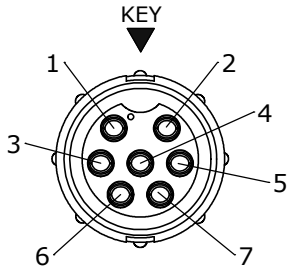
CUSTOMER PRINT

PART NUMBER: 15180-XSG-4XX

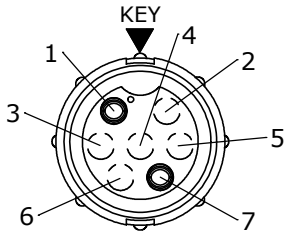
- NOTES:
- 1. ALL PARTS TO BE BULK PACKED.
  - 2. RED SILICONE O-RING IS LUBRICATED AND INSTALLED INTO GROOVE OF CABLE CLAMP
  - 3. CONTACTS SUPPLIED UNASSEMBLED
  - 4. DIMENSIONS ARE REFERENCE ONLY EXCEPT THOSE WITH A TOLERANCE

ASS'Y P/N	GROMMET SIZE
15180-XSG-440	GROMMET ID .400 [10.2] FOR CABLE OD .320 - .400 [8.1 - 10.2]
15180-XSG-450	GROMMET ID .500 [12.7] FOR CABLE OD .400 - .500 [10.2 - 12.7]
15180-XSG-457	GROMMET ID .570 [14.5] FOR CABLE OD .500 - .570 [12.7 - 14.5]

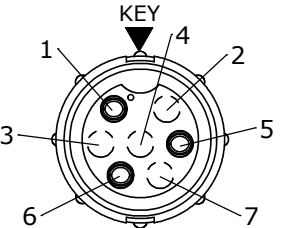
ASS'Y P/N	CONTACT QTY
15180-2SG-4XX	2
15180-3SG-4XX	3
15180-4SG-4XX	4
15180-7SG-4XX	7



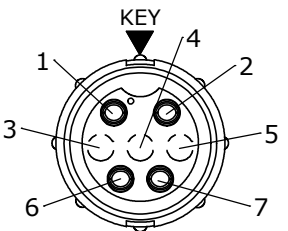
**FACE VIEW**  
15180-7SG-4XX



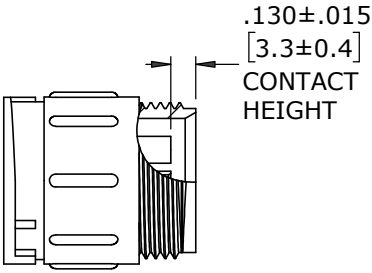
**FACE VIEW**  
15180-2SG-4XX  
POS 2, 3, 4, 5 & 6  
MOLDED CLOSED



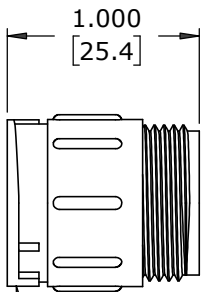
**FACE VIEW**  
15180-3SG-4XX  
POS 2, 3, 4 & 7  
MOLDED CLOSED



**FACE VIEW**  
15180-4SG-4XX  
POS 3, 4 & 5  
MOLDED CLOSED

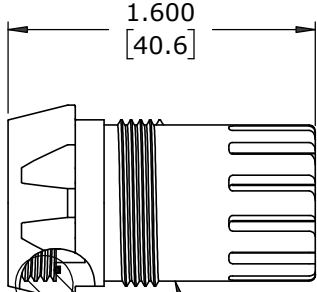


.130±.015  
[3.3±0.4]  
CONTACT  
HEIGHT

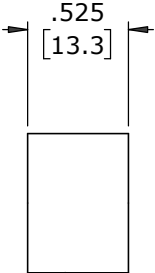


INLINE CONNECTOR, FEMALE  
MAT'L: NYLON, BLACK

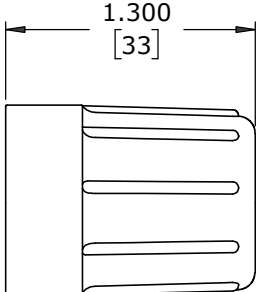
(2-4,7) #12 SOCKET CONTACTS, CRIMP  
MAT'L: COPPER ALLOY, GOLD PLATED



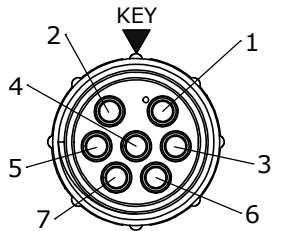
CABLE CLAMP  
MAT'L: UV PBT, BLACK



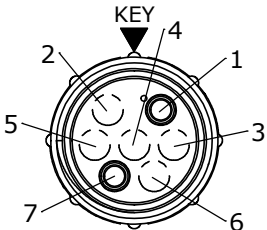
GROMMET  
MAT'L: SANTOPRENE, BLACK



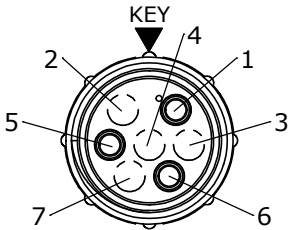
BACKSHELL  
MAT'L: UV PBT, BLACK



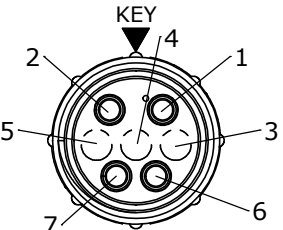
**WIRE VIEW**  
15180-7SG-4XX



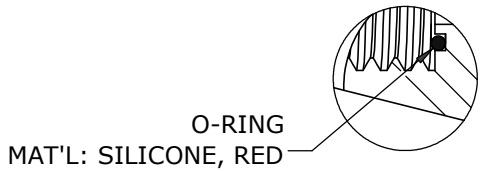
**WIRE VIEW**  
15180-2SG-4XX  
POS 2, 3, 4, 5 & 6  
MOLDED CLOSED



**WIRE VIEW**  
15180-3SG-4XX  
POS 2, 3, 4 & 7  
MOLDED CLOSED

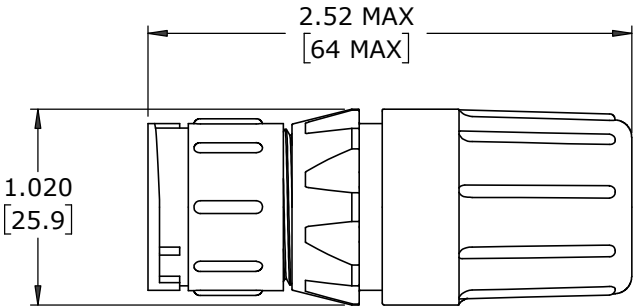


**WIRE VIEW**  
15180-4SG-4XX  
POS 3, 4 & 5  
MOLDED CLOSED



O-RING  
MAT'L: SILICONE, RED

**DETAIL A**




**SHOWN ASSEMBLED**  
FOR CUSTOMER REFERENCE ONLY

DIMENSIONS IN BRACKETS [ ] ARE METRIC

CUSTOMER APPROVAL			
THIS DOCUMENT CONTAINS CONFIDENTIAL INFORMATION PROPRIETARY TO CONXALL CORPORATION. ANY REPRODUCTION, DISCLOSURE, OR USE OF THIS DOCUMENT /INFORMATION IS EXPRESSLY PROHIBITED UNLESS AUTHORIZED IN WRITING BY CONXALL CORPORATION.			
APPROVED BY: _____			
DATE: _____			

**RoHS COMPLIANT**

A	MA	07-18-24	RELEASED PER PDR 22008-7	
	PNK	12-19-23	PRR# P-22008-7	
REV.	INIT.	DATE	DESCRIPTION	
ALL INFORMATION ILLUSTRATED IS THE PROPERTY OF "CONXALL CORPORATION". UNAUTHORIZED DUPLICATION OR DISTRIBUTION OF THIS DOCUMENT IS PROHIBITED.			ORIG. DRAWN BY: PNK	DATE: 12-19-23
ALL UNITS ARE IN FEET, INCHES, FRACTION OF INCHES AND DECIMALS.			CHECKED BY:	 601 E. WILDWOOD VILLA PARK, IL 60181
			APPROVED BY:	
			SCALE: NTS	
			SIZE: B	
			SHEET: 1 OF 1	
			FILE: 15180-XSG-4XX	
			DIRECTORY: SLW	
			TITLE: INLINE CONNECTOR ASS'Y (2-4,7) #12 SOCKET CONTACTS, CRIMP MAXI-CON-X	
			CUSTOMER: STANDARD PRODUCT	
			PART NUMBER: 15180-XSG-4XX	
			REV: A	