

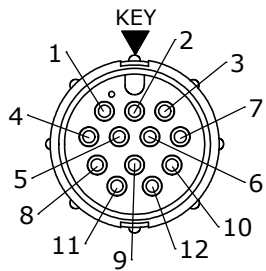
CUSTOMER PRINT

PART NUMBER: 15380-XXPG-4XX

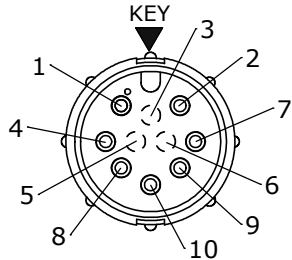
- NOTES:
1. ALL PARTS TO BE BULK PACKED.
 2. RED SILICONE O-RING IS LUBRICATED AND INSTALLED INTO GROOVE OF CABLE CLAMP
 3. CONTACTS SUPPLIED UNASSEMBLED
 4. DIMENSIONS ARE REFERENCE ONLY EXCEPT THOSE WITH A TOLERANCE

ASS'Y P/N	GROMMET I.D. / CABLE O.D. RANGE
15380-XXPG-440	GROMMET ID .400 [10.2] FOR CABLE OD .320 - .400 [8.1 - 10.2]
15380-XXPG-450	GROMMET ID .500 [12.7] FOR CABLE OD .400 - .500 [10.2 - 12.7]
15380-XXPG-457	GROMMET ID .570 [14.5] FOR CABLE OD .500 - .570 [12.7 - 14.5]

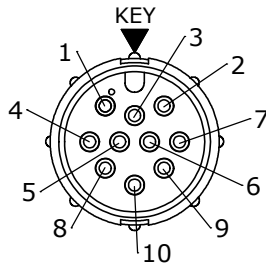
ASSEMBLY P/N	CONTACT QTY
15380-7PG-4XX	7
15380-10PG-4XX	10
15380-12PG-4XX	12



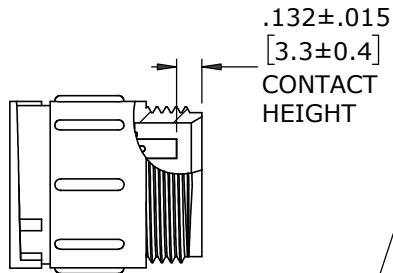
FACE VIEW
15380-12PG-4XX



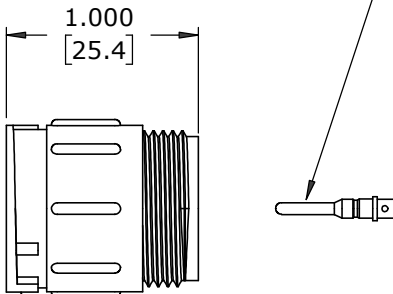
FACE VIEW
15380-7PG-4XX
POS 3, 5 & 6 CLOSED



FACE VIEW
15380-10PG-4XX

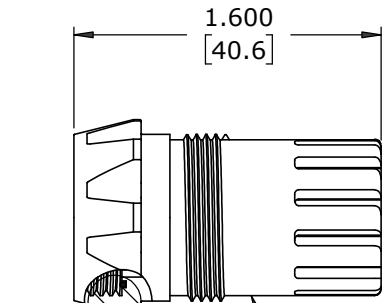


CONTACT
HEIGHT



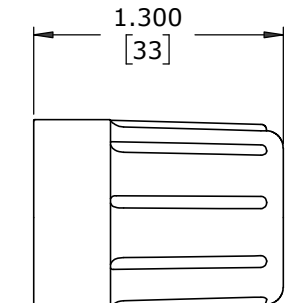
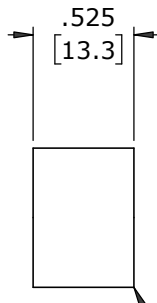
INLINE CONNECTOR, MALE
MAT'L: NYLON, BLACK

(7, 10, 12) - #16 PIN CONTACTS, CRIMP
MAT'L: COPPER ALLOY, GOLD PLATED



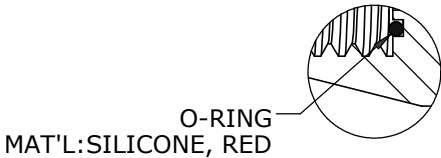
A

CABLE CLAMP
MAT'L: UV PBT, BLACK

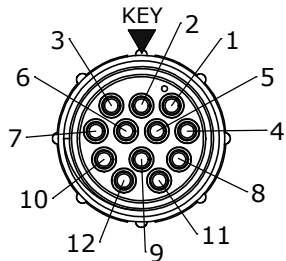


BACKSHELL
MAT'L: UV PBT, BLACK

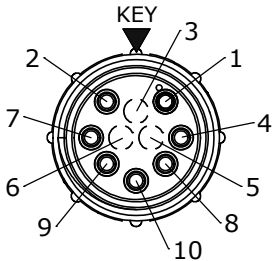
GROMMET
MAT'L: SANTOPRENE, BLACK



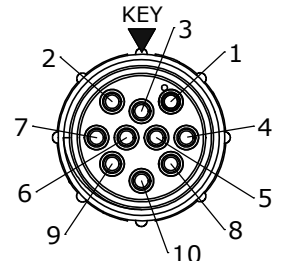
DETAIL A



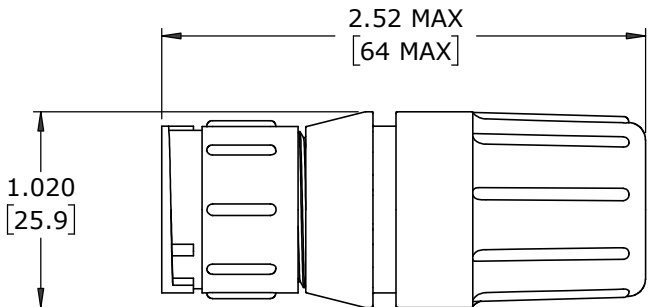
WIRE VIEW
15380-12PG-4XX



WIRE VIEW
15380-7PG-4XX
POS 3, 5 & 6 CLOSED




WIRE VIEW
15380-10PG-4XX



SHOWN ASSEMBLED
FOR CUSTOMER REFERENCE ONLY

CUSTOMER APPROVAL			
THIS DOCUMENT CONTAINS CONFIDENTIAL INFORMATION PROPRIETARY TO CONXALL CORPORATION. ANY REPRODUCTION, DISCLOSURE, OR USE OF THIS DOCUMENT /INFORMATION IS EXPRESSLY PROHIBITED UNLESS AUTHORIZED IN WRITING BY CONXALL CORPORATION.			
APPROVED BY: _____			
DATE: _____			

A	MA	08-08-24	RELEASED PER PDR 22008-7		
	PNK	12-19-23	PRR# P-22008-7		
REV.	INIT.	DATE	DESCRIPTION		
ALL INFORMATION ILLUSTRATED IS THE PROPERTY OF "CONXALL CORPORATION". UNAUTHORIZED DUPLICATION OR DISTRIBUTION OF THIS DOCUMENT IS PROHIBITED.			ORIG. DRAWN BY:	DATE:	 601 E. WILDWOOD VILLA PARK, IL 60181
			PNK	12-19-23	
ALL UNITS ARE IN FEET, INCHES, FRACTION OF INCHES AND DECIMALS.			CHECKED BY:		
			APPROVED BY:		
= CRITICAL CHARACTERISTIC FLAG PER SPEC. XXXX			SCALE	SIZE	
			NTS	B	1 OF 1
FILE:			DIRECTORY:	PART NUMBER:	REV
15380-XXPG-4XX			SLW	15380-XXPG-4XX	A

DIMENSIONS IN BRACKETS [] ARE METRIC

RoHS COMPLIANT