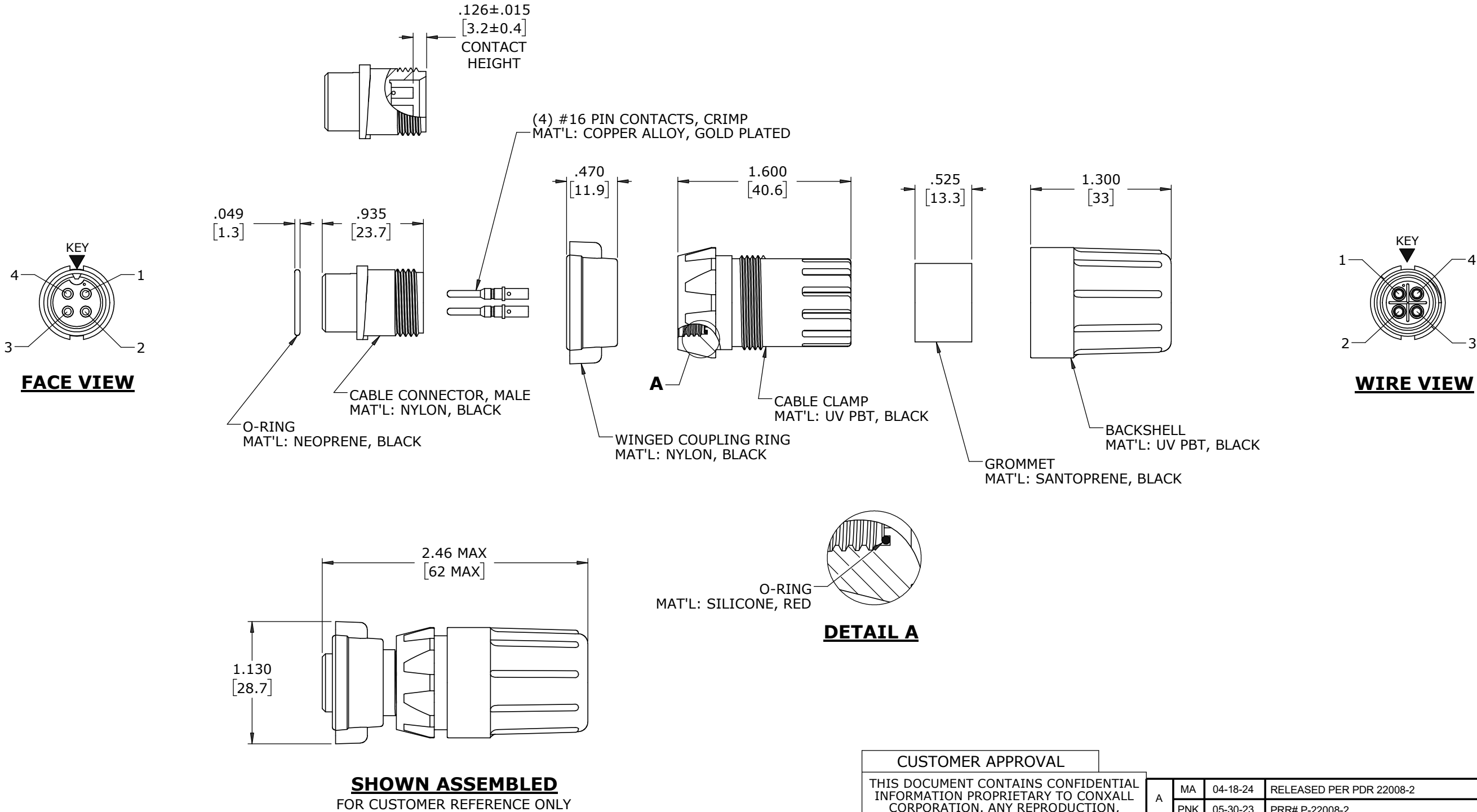


NOTES:

- 1. ALL PARTS TO BE BULK PACKED.
- 2. RED SILICONE O-RING IS LUBRICATED AND INSTALLED INTO GROOVE OF CABLE CLAMP
- 3. CONTACTS SHIPPED UNASSEMBLED
- 4. DIMENSIONS ARE REFERENCE ONLY EXCEPT THOSE WITH A TOLERANCE

ASSEMBLY P/N	GROMMET I.D. / CABLE O.D. RANGE	CONTACTS
3380-4PG-440W	0.400 [10.2] / 0.320 - 0.400 [8.1 - 10.2]	4 #16
3380-4PG-450W	0.500 [12.7] / 0.400 - 0.500 [10.2 - 12.7]	
3380-4PG-457W	0.570 [14.5] / 0.500 - 0.570 [12.7 - 14.5]	



CUSTOMER APPROVAL	
THIS DOCUMENT CONTAINS CONFIDENTIAL INFORMATION PROPRIETARY TO CONXALL CORPORATION. ANY REPRODUCTION, DISCLOSURE, OR USE OF THIS DOCUMENT /INFORMATION IS EXPRESSLY PROHIBITED UNLESS AUTHORIZED IN WRITING BY CONXALL CORPORATION.	
APPROVED BY: _____	DATE: _____

A	MA	04-18-24	RELEASED PER PDR 22008-2	
	PNK	05-30-23	PRR# P-22008-2	
REV.	INIT.	DATE	DESCRIPTION	
ALL INFORMATION ILLUSTRATED IS THE PROPERTY OF "CONXALL CORPORATION". UNAUTHORIZED DUPLICATION OR DISTRIBUTION OF THIS DOCUMENT IS PROHIBITED.			ORIG. DRAWN BY: PNK	DATE: 05-30-23
ALL UNITS ARE IN FEET, INCHES, FRACTION OF INCHES AND DECIMALS.			CHECKED BY:	 601 E. WILDWOOD VILLA PARK, IL 60181
			APPROVED BY:	
			SCALE: NTS SIZE: B SHEET: 1 OF 1	
			FILE: 3380-4PG-4XXW DIRECTORY: SLW	TITLE: CABLE CONNECTOR ASS'Y (4) #16 PIN CONTACTS, CRIMP MULTI-CON-X CUSTOMER: STANDARD PRODUCT
			PART NUMBER: 3380-4PG-4XXW	REV A

DIMENSIONS IN BRACKETS [] ARE METRIC

RoHS COMPLIANT

➤ = CRITICAL CHARACTERISTIC FLAG PER SPEC. XXXX