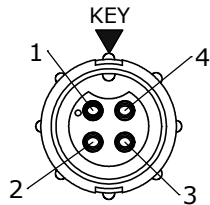
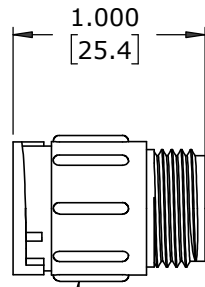
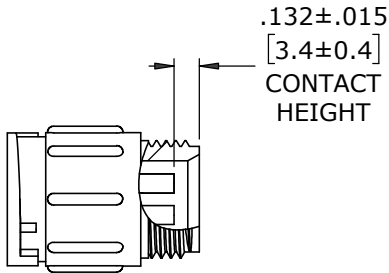


- NOTES:
- 1. ALL PARTS TO BE BULK PACKED.
 - 2. RED SILICONE O-RING IS LUBRICATED AND INSTALLED INTO GROOVE OF CABLE CLAMP
 - 3. CONTACTS SIPLIED UNASSEMBLED
 - 4. DIMENSIONS ARE REFERENCE ONLY EXCEPT THOSE WITH A TOLERANCE

ASSEMBLY P/N	GROMMET I.D. / CABLE O.D. RANGE	CONTACTS
5380-4SG-440	0.400 [10.2] / 0.320 - 0.400 [8.1 - 10.2]	4 #16
5380-4SG-450	0.500 [12.7] / 0.400 - 0.500 [10.2 - 12.7]	
5380-4SG-457	0.570 [14.5] / 0.500 - 0.570 [12.7 - 14.5]	

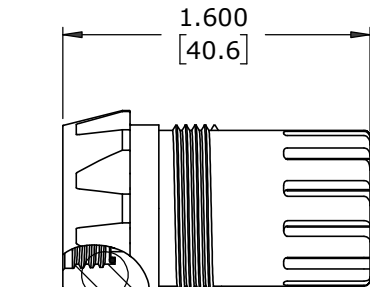


FACE VIEW
5380-4SG-4XX



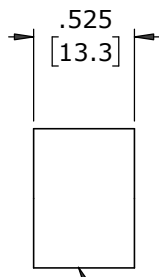
INLINE CONNECTOR, FEMALE
MAT'L: NYLON, BLACK

(4) #16 SOCKET CONTACTS, CRIMP
MAT'L: COPPER ALLOY, GOLD PLATED

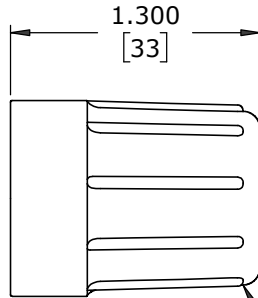


A

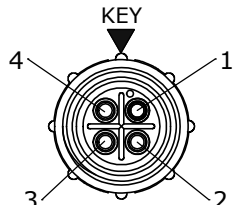
CABLE CLAMP
MAT'L: UV PBT, BLACK



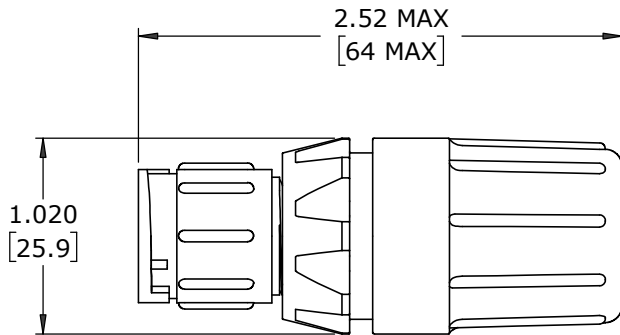
GROMMET
MAT'L: SANTOPRENE, BLACK



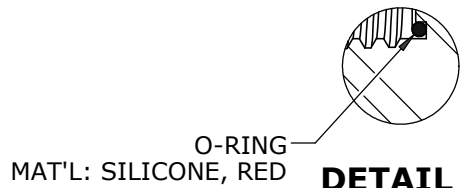
BACKSHELL
MAT'L: UV PBT, BLACK



WIRE VIEW
5380-4SG-4XX




SHOWN ASSEMBLED
FOR CUSTOMER REFERENCE ONLY



DETAIL A

CUSTOMER APPROVAL	
THIS DOCUMENT CONTAINS CONFIDENTIAL INFORMATION PROPRIETARY TO CONXALL CORPORATION. ANY REPRODUCTION, DISCLOSURE, OR USE OF THIS DOCUMENT /INFORMATION IS EXPRESSLY PROHIBITED UNLESS AUTHORIZED IN WRITING BY CONXALL CORPORATION.	
APPROVED BY:	_____
DATE:	_____

A	MA	04-24-24	RELEASED PER PDR 22008-4			
	PNK	05-19-23	PRR# P-22008-4			
REV.	INIT.	DATE	DESCRIPTION			
ALL INFORMATION ILLUSTRATED IS THE PROPERTY OF "CONXALL CORPORATION". UNAUTHORIZED DUPLICATION OR DISTRIBUTION OF THIS DOCUMENT IS PROHIBITED.			ORIG. DRAWN BY:	DATE:	 601 E. WILDWOOD VILLA PARK, IL 60181	
			PNK	05-19-23		
ALL UNITS ARE IN FEET, INCHES, FRACTION OF INCHES AND DECIMALS.			CHECKED BY:			
			APPROVED BY:			
= CRITICAL CHARACTERISTIC FLAG PER SPEC. XXXX			SCALE	SIZE		TITLE:
			NTS	B		
			SHEET	TITLE:		
			1 OF 1	INLINE CONNECTOR ASSY (4) #16 SOCKET CONTACTS, CRIMP MULTI-CON-X		
			CUSTOMER:		REV A	
			STANDARD PRODUCT			
FILE:			DIRECTORY:	PART NUMBER:		
5380-4SG-4XX			SLW	5380-4SG-4XX		