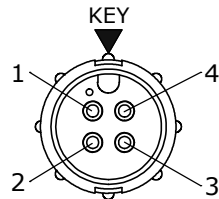


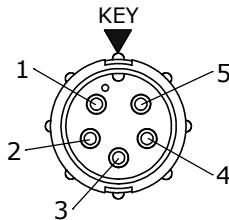
NOTES:

- 1. ALL PARTS TO BE BULK PACKED.
- 2. RED SILICONE O-RING IS LUBRICATED AND INSTALLED INTO GROOVE OF CABLE CLAMP
- 3. CONTACTS SUPPLIED UNASSEMBLED
- 4. DIMENSIONS ARE REFERENCE ONLY EXCEPT THOSE WITH A TOLERANCE

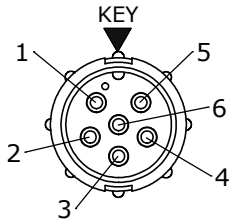
ASSEMBLY P/N	GROMMET I.D. / CABLE O.D. RANGE	CONTACTS
5380-4PG-440	0.400 [10.2] / 0.320 - 0.400 [8.1 - 10.2]	4 #16
5380-4PG-450	0.500 [12.7] / 0.400 - 0.500 [10.2 - 12.7]	
5380-4PG-457	0.570 [14.5] / 0.500 - 0.570 [12.7 - 14.5]	
5380-5PG-440	0.400 [10.2] / 0.320 - 0.400 [8.1 - 10.2]	5 #16
5380-5PG-450	0.500 [12.7] / 0.400 - 0.500 [10.2 - 12.7]	
5380-5PG-457	0.570 [14.5] / 0.500 - 0.570 [12.7 - 14.5]	
5380-6PG-440	0.400 [10.2] / 0.320 - 0.400 [8.1 - 10.2]	6 #16
5380-6PG-450	0.500 [12.7] / 0.400 - 0.500 [10.2 - 12.7]	
5380-6PG-457	0.570 [14.5] / 0.500 - 0.570 [12.7 - 14.5]	



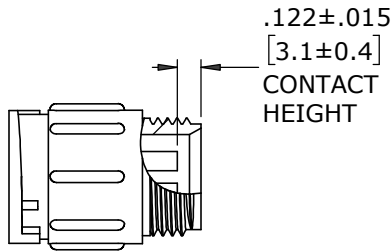
FACE VIEW
5380-4PG-4XX



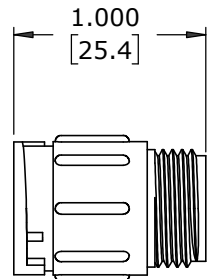
FACE VIEW
5380-5PG-4XX



FACE VIEW
5380-6PG-4XX

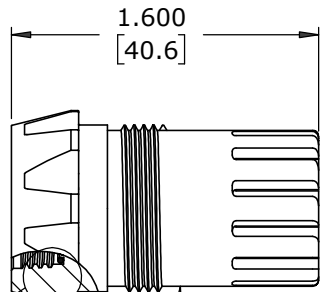


CONTACT
HEIGHT

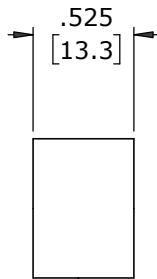


IN-LINE CONNECTOR, MALE
MAT'L: NYLON, BLACK

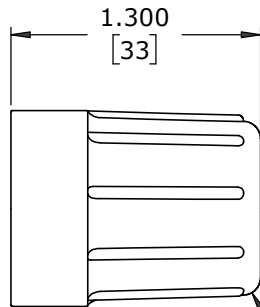
(4-6) #16 PIN CONTACTS, CRIMP
MAT'L: COPPER ALLOY, GOLD PLATED



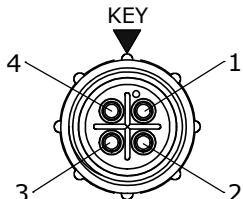
CABLE CLAMP
MAT'L: UV PBT, BLACK



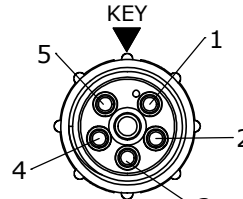
GROMMET
MAT'L: SANTOPRENE, BLACK



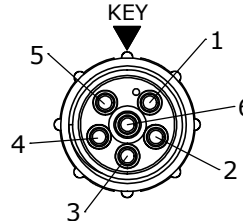
BACKSHELL
MAT'L: UV PBT, BLACK



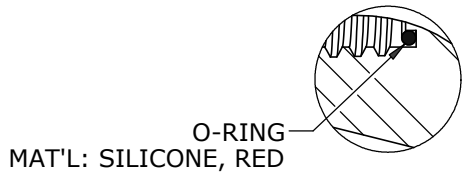
WIRE VIEW
5380-4PG-4XX



WIRE VIEW
5380-5PG-4XX

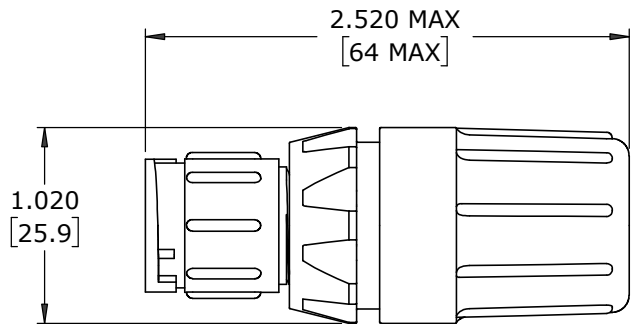


WIRE VIEW
5380-6PG-4XX



O-RING
MAT'L: SILICONE, RED

DETAIL A



SHOWN ASSEMBLED
FOR CUSTOMER REFERENCE ONLY

CUSTOMER APPROVAL	
THIS DOCUMENT CONTAINS CONFIDENTIAL INFORMATION PROPRIETARY TO CONXALL CORPORATION. ANY REPRODUCTION, DISCLOSURE, OR USE OF THIS DOCUMENT /INFORMATION IS EXPRESSLY PROHIBITED UNLESS AUTHORIZED IN WRITING BY CONXALL CORPORATION.	
APPROVED BY:	_____
DATE:	_____

DIMENSIONS IN BRACKETS [] ARE METRIC

RoHS COMPLIANT

A	MA	04-24-24	RELEASED PER PDR 22008-4	
	PNK	05-19-23	PRR# P-22008-4	
REV.	INIT.	DATE	DESCRIPTION	
ALL INFORMATION ILLUSTRATED IS THE PROPERTY OF "CONXALL CORPORATION". UNAUTHORIZED DUPLICATION OR DISTRIBUTION OF THIS DOCUMENT IS PROHIBITED.			ORIG. DRAWN BY: PNK	DATE: 05-19-23
ALL UNITS ARE IN FEET, INCHES, FRACTION OF INCHES AND DECIMALS.			CHECKED BY:	 601 E. WILDWOOD VILLA PARK, IL 60181
			APPROVED BY:	
			SCALE: NTS	
			SIZE: B	
			SHEET: 1 OF 1	
			FILE: 5380-XPG-4XX	
			DIRECTORY: SLW	
			PART NUMBER: 5380-XPG-4XX	
			TITLE: INLINE CONNECTOR ASS'Y (4-6) #16 PIN CONTACTS, CRIMP MULTI-CON-X STANDARD PRODUCT	
			REV A	