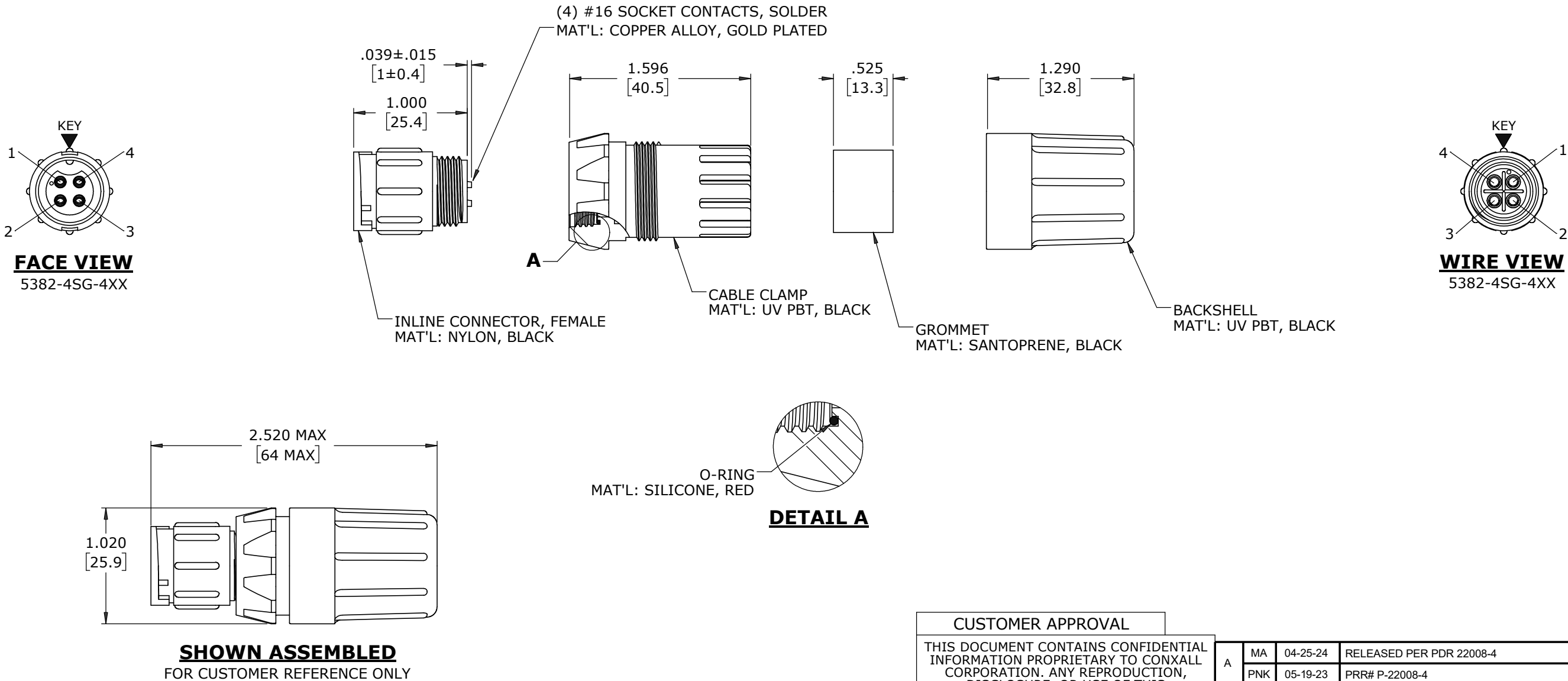


- NOTES:
1. ALL PARTS TO BE BULK PACKED
 2. RED SILICONE O-RING IS LUBRICATED AND INSTALLED INTO GROOVE OF CABLE CLAMP
 3. CONTACTS ARE ASSEMBLED INTO CONNECTOR
 4. DIMENSIONS ARE REFERENCE ONLY EXCEPT THOSE WITH A TOLERANCE

ASSEMBLY P/N	GROMMET I.D. / CABLE O.D. RANGE	CONTACTS
5382-4SG-440	0.400 [10.2] / 0.320 - 0.400 [8.1 - 10.2]	4 #16
5382-4SG-450	0.500 [12.7] / 0.400 - 0.500 [10.2 - 12.7]	
5382-4SG-457	0.570 [14.5] / 0.500 - 0.570 [12.7 - 14.5]	



CUSTOMER APPROVAL										
THIS DOCUMENT CONTAINS CONFIDENTIAL INFORMATION PROPRIETARY TO CONXALL CORPORATION. ANY REPRODUCTION, DISCLOSURE, OR USE OF THIS DOCUMENT /INFORMATION IS EXPRESSLY PROHIBITED UNLESS AUTHORIZED IN WRITING BY CONXALL CORPORATION.										
APPROVED BY: _____										
DATE: _____										
METRIC	RoHS COMPLIANT		<div><div></div><div>= CRITICAL CHARACTERISTIC FLAG PER SPEC. XXXX</div></div>	A	MA	04-25-24	RELEASED PER PDR 22008-4			
					PNK	05-19-23	PRR# P-22008-4			
				REV.	INIT.	DATE	DESCRIPTION			
				ALL INFORMATION ILLUSTRATED IS THE PROPERTY OF "CONXALL CORPORATION". UNAUTHORIZED DUPLICATION OR DISTRIBUTION OF THIS DOCUMENT IS PROHIBITED.			ORIG. DRAWN BY: DATE: PNK 05-19-23		<div>conxall</div> <div>601 E. WILDWOOD VILLA PARK, IL 60181</div>	
				ALL UNITS ARE IN FEET, INCHES, FRACTION OF INCHES AND DECIMALS.			CHECKED BY:			
					APPROVED BY:		TITLE: INLINE CONNECTOR ASS'Y (4) #16 SOCKET CONTACTS, SOLDER MULTI-CON-X			
					SCALE SIZE SHEET NTS B 1 OF 1		CUSTOMER: STANDARD PRODUCT			
					FILE: 5382-4SG-4XX		PART NUMBER: 5382-4SG-4XX		REV A	
					DIRECTORY: SLW					

DIMENSIONS IN BRACKETS [] ARE METRIC

RoHS COMPLIANT

▷ = CRITICAL CHARACTERISTIC FLAG PER SPEC. XXXX