

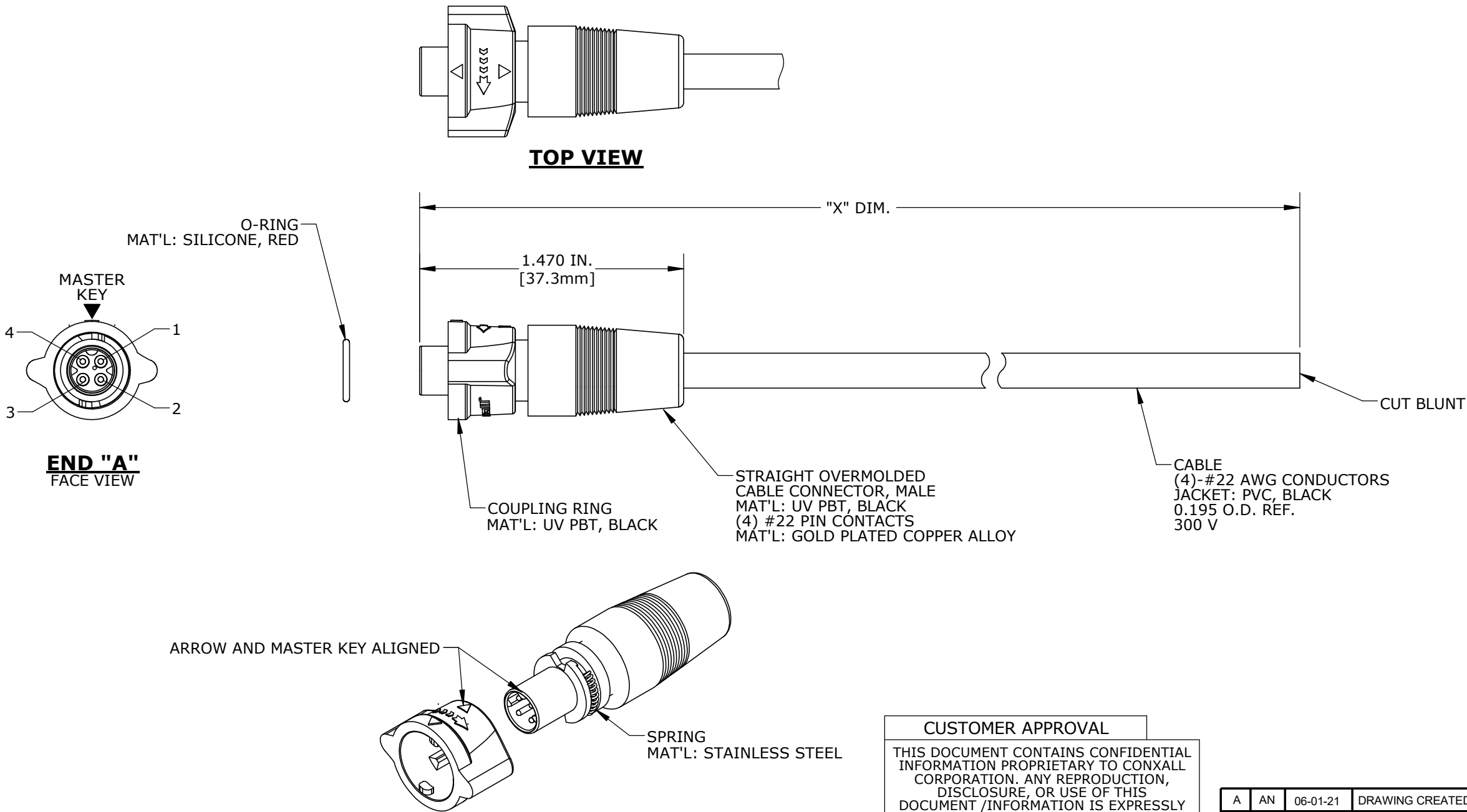
CUSTOMER PRINT

PART NUMBER: CA168804PPXXX90

- NOTES:
1. FINISHED CABLE ASSEMBLY TO BE COILED
 2. OVERMOLD BOOT MATERIAL: UV PBT, BLACK
 3. ELECTRICAL TEST: 100% CONTINUITY
 4. ALL DIMENSIONS ARE REFERENCE ONLY EXCEPT WHEN NOTED WITH TOLERANCE

ASS'Y P/N	"X" DIM.
CA168804PP03990	3 FT. 3 1/2 IN. ± 2 IN. [1M ±50.8mm]
CA168804PP07990	6 FT. 7 IN. ± 2 IN. [2M ±50.8mm]
CA168804PP19790	16 FT. 5 IN. ± 4 IN. [5M ±101.6mm]
CA168804PP39490	32 FT. 9 3/4 IN. ± 8 IN. [10M ±203.2mm]
CA168804PPXXX90	

CABLE LENGTH IN "INCHES"



DIMENSIONS IN BRACKETS [] ARE METRIC

CUSTOMER APPROVAL


THIS DOCUMENT CONTAINS CONFIDENTIAL INFORMATION PROPRIETARY TO CONXALL CORPORATION. ANY REPRODUCTION, DISCLOSURE, OR USE OF THIS DOCUMENT /INFORMATION IS EXPRESSLY PROHIBITED UNLESS AUTHORIZED IN WRITING BY CONXALL CORPORATION.

APPROVED BY: _____

DATE: _____

RoHS COMPLIANT

WIRE COLOR CODE, END "A"			
POS. 1	POS. 2	POS. 3	POS. 4
BLK	WHT	BLU	BRN

A	AN	06-01-21	DRAWING CREATED PER DOR 21-109360DS					
REV.	INIT.	DATE	DESCRIPTION					
ALL INFORMATION ILLUSTRATED IS THE PROPERTY OF "CONXALL CORPORATION". UNAUTHORIZED DUPLICATION OR DISTRIBUTION OF THIS DOCUMENT IS PROHIBITED.			ORIG. DRAWN BY: AN		DATE: 06-01-21		 601 E. WILDWOOD VILLA PARK, IL 60181	
			CHECKED BY:					
ALL UNITS ARE IN FEET, INCHES, FRACTION OF INCHES AND DECIMALS.			APPROVED BY:		TITLE: CABLE ASSEMBLY (4) #22 PIN CONTACTS INSTA-CLICK™ MICRO-CON-X STANDARD PRODUCT			
			SCALE NTS	SIZE B	SHEET 1 OF 1		CUSTOMER:	
= CRITICAL CHARACTERISTIC FLAG PER SPEC. XXXX			FILE: CA168804PPXXX90		DIRECTORY: SLW		PART NUMBER: CA168804PPXXX90	
							REV A	