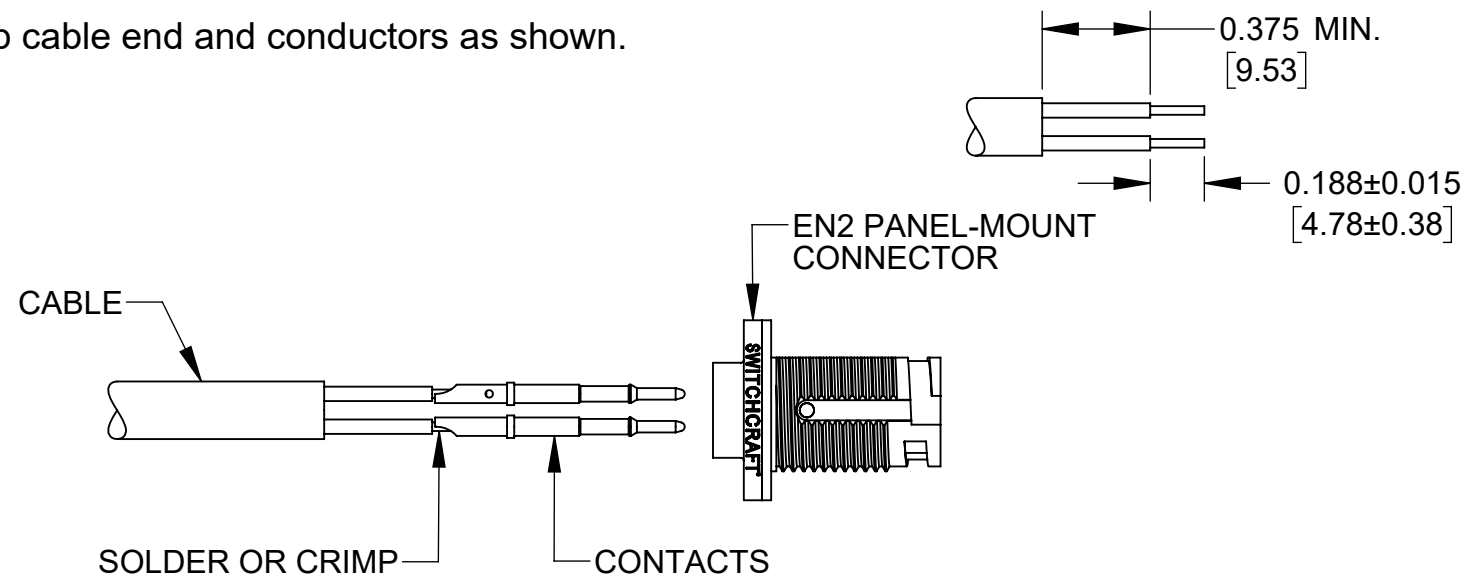


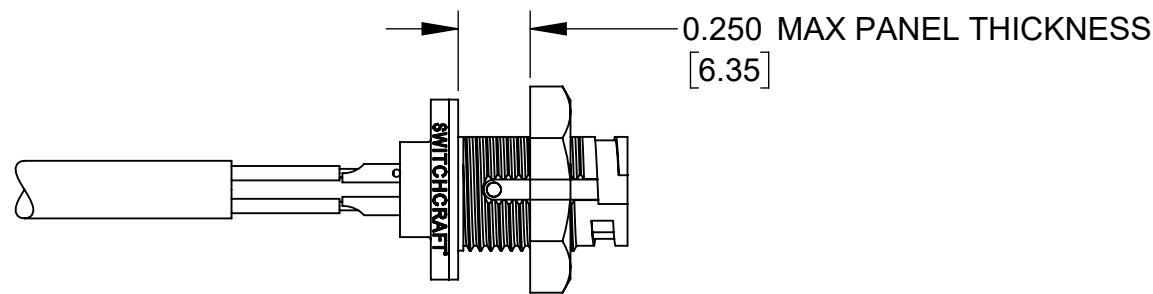
**CONTACT ARRANGEMENTS
PANEL CONNECTOR REAR (WIRING SIDE) VIEW**

EN2 PANEL CONNECTOR FIELD ASSEMBLY INSTRUCTIONS:

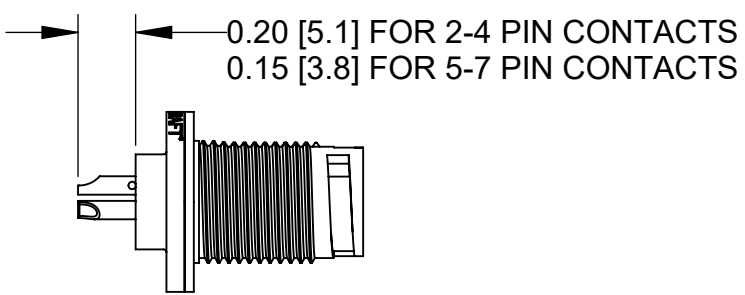
Strip cable end and conductors as shown.



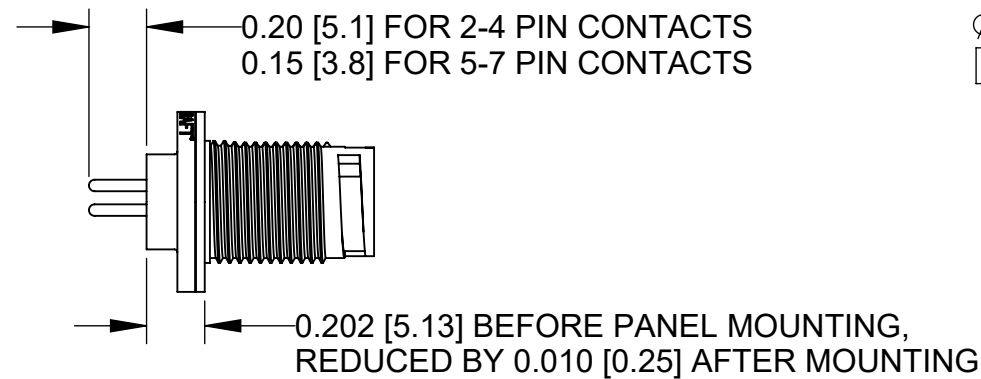
Soldering or crimping conductors to contacts is recommended before insertion into connector. If crimping, use hand or pneumatic crimp tool with crimp positioner per contact size. If soldering after contacts are inserted in the connector, limit exposure of contacts to soldering iron temperature to 4 sec. maximum. Soldering iron temperature should not exceed 650°F (343°C).



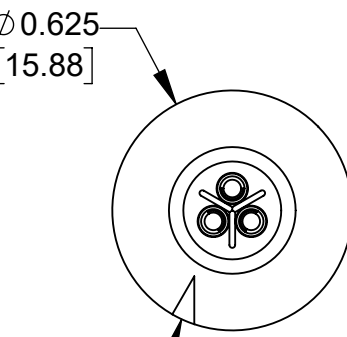
Insert wired contacts into connector housing using an insertion tool and per contacts arrangements. Align and install connector into panel cut-out. Tighten hex nut 5-6 in-lb.



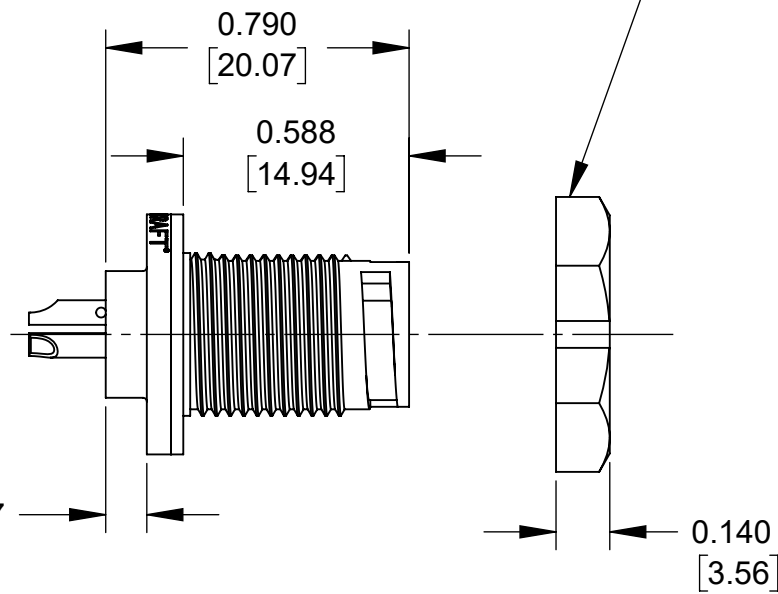
SOLDER OR CRIMP TYPE CONTACTS



PC TAIL TYPE CONTACTS



PIN 1 INDICATOR

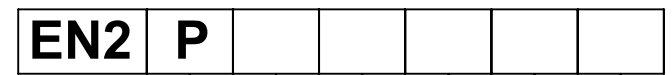


**HEX NUT
SUPPLIED UNASSEMBLED**

**RECOMMENDED
PANEL CUT-OUT
±0.003 [±0.08]**

ALL DIMENSIONS FOR REFERENCE ONLY

PART NUMBER SCHEME:



Connector Type:
P - Panel

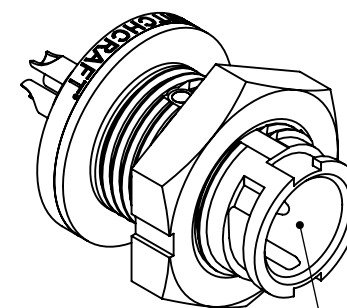
of Contacts:
2-3 for #20
4 for #22
5-7 for #26

Gender:
M - Male
F - Female

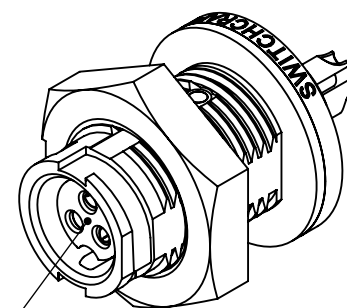
Contact Size:
20 - #20
22 - #22
26 - #26

Packaging Options:
Leave blank for Bulk
K - Kit (one unit/bag)

Contact Style:
Leave blank for Solder or Crimp
P - PC tail



**PIN CONTACTS
(MALE)**



**SOCKET CONTACTS
(FEMALE)**

| Contacts | Wire (awg) | Current Rating (A) at Operating Temperature (°C) | | | | |
|----------|------------|---|-----------|-----------|-----------|-----------|
| | | 45°C max. | 55°C max. | 65°C max. | 75°C max. | 85°C max. |
| 2 #20 | 20 | 7 | 6 | 5 | 4 | 3.5 |
| | 22 | 5.5 | 5 | 4 | 3 | 2.5 |
| | 24 | 5.5 | 5 | 4 | 3 | 2.5 |
| | 26 | 4 | 3.5 | 2.5 | 2 | 1 |
| 3 #20 | 20 | 6.5 | 5.5 | 4.5 | 3.5 | 2 |
| | 22 | 5 | 4.5 | 3.5 | 3 | 1.5 |
| | 24 | 5 | 4.5 | 3.5 | 3 | 1.5 |
| | 26 | 3 | 2.5 | 2 | 1.5 | 0.5 |
| 4 #22 | 20 | 5 | 4.5 | 3.5 | 3 | 1.5 |
| | 22 | 4.5 | 4 | 3 | 2 | 1 |
| | 24 | 4.5 | 4 | 3 | 2 | 1 |
| | 26 | 3 | 2.5 | 2 | 1.5 | 0.5 |
| 5-7 #26 | 26 | 3 | 2.5 | 2 | 1.5 | 1 |
| | 28 | 2.5 | 2 | 1.5 | 1 | 0.5 |
| | 30 | 2 | 1.5 | 1 | 0.5 | 0.5 |

SPECIFICATIONS:

MECHANICAL

Life: 600 cycles minimum
Vibration: Mil-Std 202G Method 201A
Hex Nut Torque: 5-6 in-lb

ELECTRICAL

Voltage Rating: 250 V AC/DC for 2 contact arrangement
125 V AC/DC for 3-7 contact arrangements
Insulation Resistance: 1000 mΩ minimum
Contact Resistance: 10 mΩ maximum
Current Rating: Refer to Current Rating Table

ENVIRONMENTAL

Operating Temperature Limits: -40°C to +85°C (-40°F to +185°F), see Current Rating Table.
Moisture Resistance: Mil-Std 202G Method 106G
Insulation Resistance: Mil-Std 202G Method 302
Thermal Shock: Mil-Std 202G Method 107G
Salt Atmosphere (Corrosion): Mil-Std 202G Method 101E
Weathertight Ratings:
IP16, IP18, IP66, IP67, IP68 per IEC60529
NEMA 250 (6P), CFR 46 Part 110.20

MATERIAL

Connector Housing ----- Thermoplastic, black
Hex Nut: ----- Thermoplastic, black
Insulator ----- Elastomer, black
Seal Grommet ----- Elastomer, black
Contacts ----- Copper Alloy, plated

| TOOL | TOOL TYPE | POSITIONER | CONTACT SIZE | WIRE SIZES |
|------------|-------------------------------------|------------|--------------|------------------------|
| EN3CR | HAND CRIMP TOOL | EN2POS20 | 20 and 22 | 20 and 22 AWG |
| | | EN3POS26 | 26 | 26, 28, and 30 AWG |
| EN3CRAUTO | PNEUMATIC CRIMP TOOL | EN2POS20 | 20 and 22 | 20 and 22 AWG |
| | | EN3POS26 | 26 | 26, 28, and 30 AWG |
| EN2CRL | HAND CRIMP TOOL LARGE FRAME | EN2POS20L | 20 and 22 | 20, 22, 24, and 26 AWG |
| EN2CRAUTOL | PNEUMATIC CRIMP TOOL LARGE FRAME | | | |
| EN3INS20 | CONTACT INSERTION/EXTRUCTION | -- | 20 and 22 | -- |
| EN3INS26 | | -- | 26 | -- |

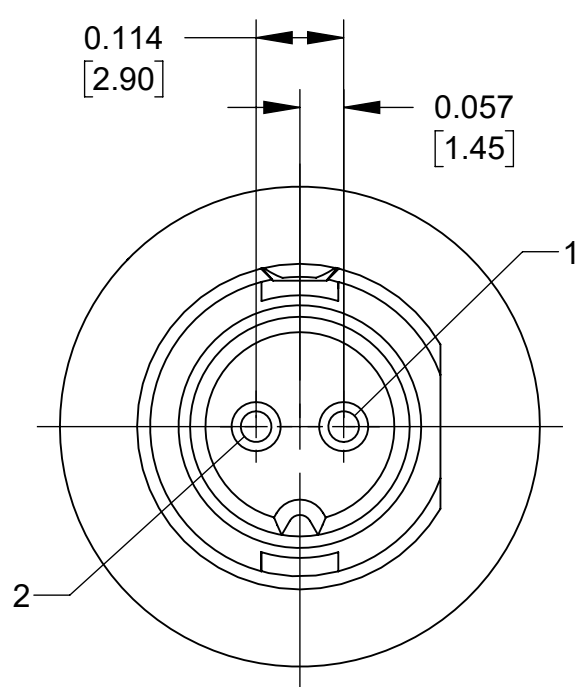
| REV | ECO NUMBER | DATE | BY | APVD |
|-----|------------|----------|----|------|
| A | 27372 | 10/03/14 | PC | TJK |

UNLESS OTHERWISE SPECIFIED
1. ALL DIMENSIONS IN INCHES [mm]
- TWO PLACE DECIMALS ±0.02 [0.5]
- THREE PLACE DECIMALS ±0.005 [0.13]

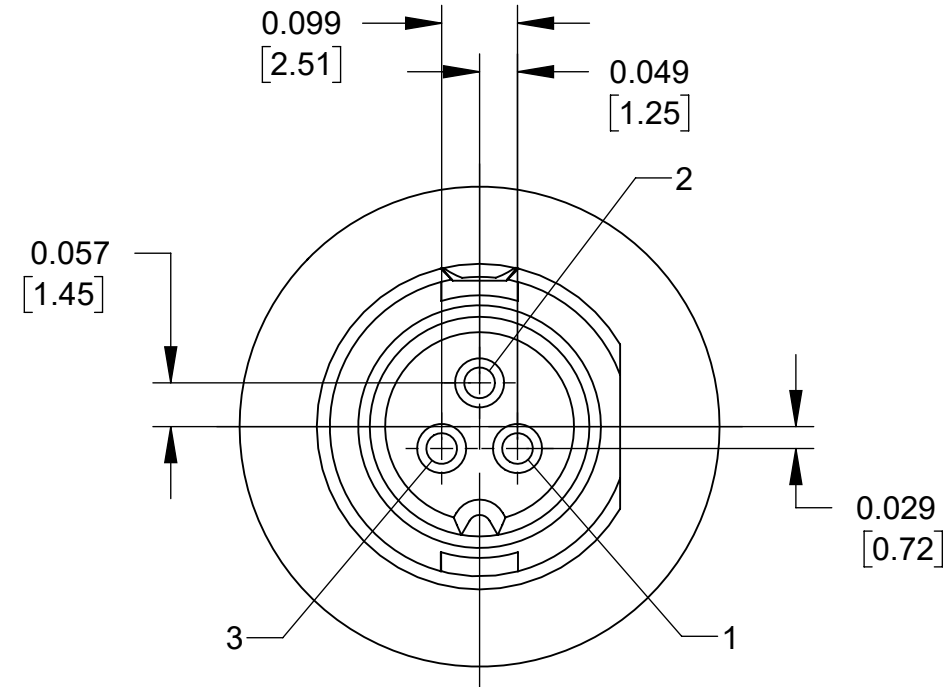
REVISIONS

| | | | | |
|--|-------|-------------------|-------------|--------|
| THIS DRAWING DESCRIBES A DESIGN CONSIDERED PROPRIETARY IN NATURE, DEVELOPED AND MANUFACTURED BY SWITCHCRAFT INC. AND IS RELEASED ON A CONFIDENTIAL BASIS FOR IDENTIFICATION PURPOSES ONLY. | | | | |
| SIZE | WIDTH | MULT | LBS/M | TEMPER |
| FINISH SPEC No. | | MATERIAL SPEC No. | | |
| FIRST USED ON | | SCALE 1.5:1 | | |
| DATE DRAWN | BY | CHKD | APVD | |
| 02/09/12 | PNK | 02/09/12 | 02/09/12 | |
| NAME | | | PART No. | REV |
| EN2P SERIES CONNECTORS, RoHS | | | EN2P SERIES | A |

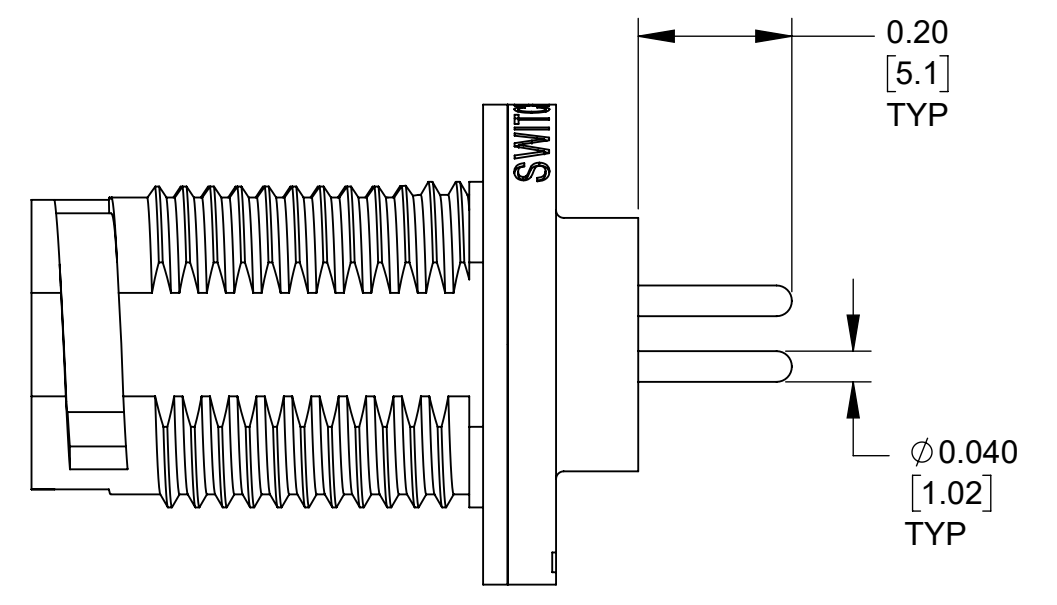
SHEET 1 OF 2



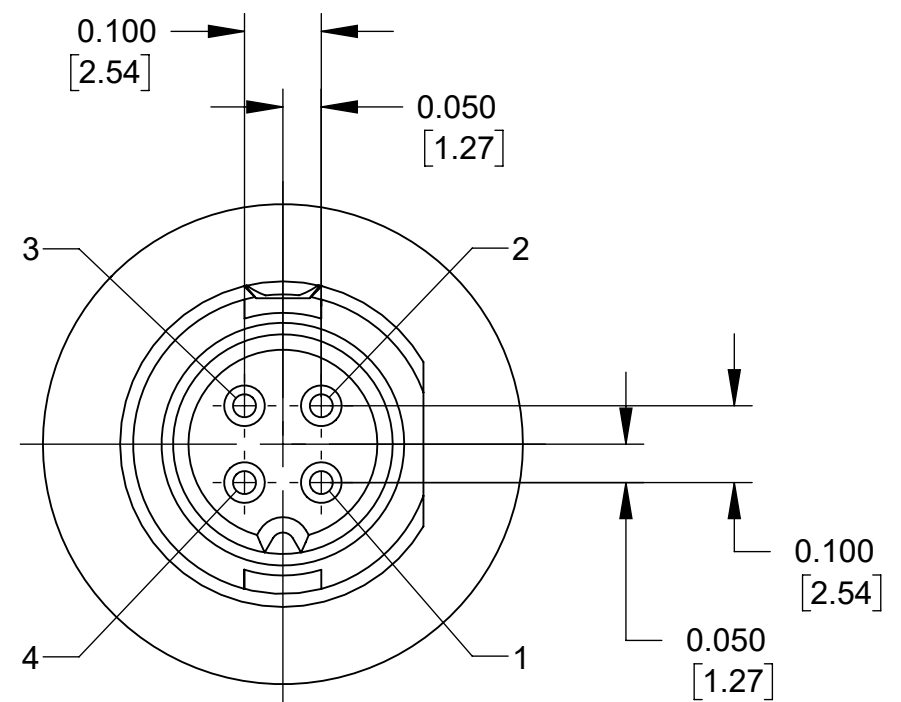
2-#20



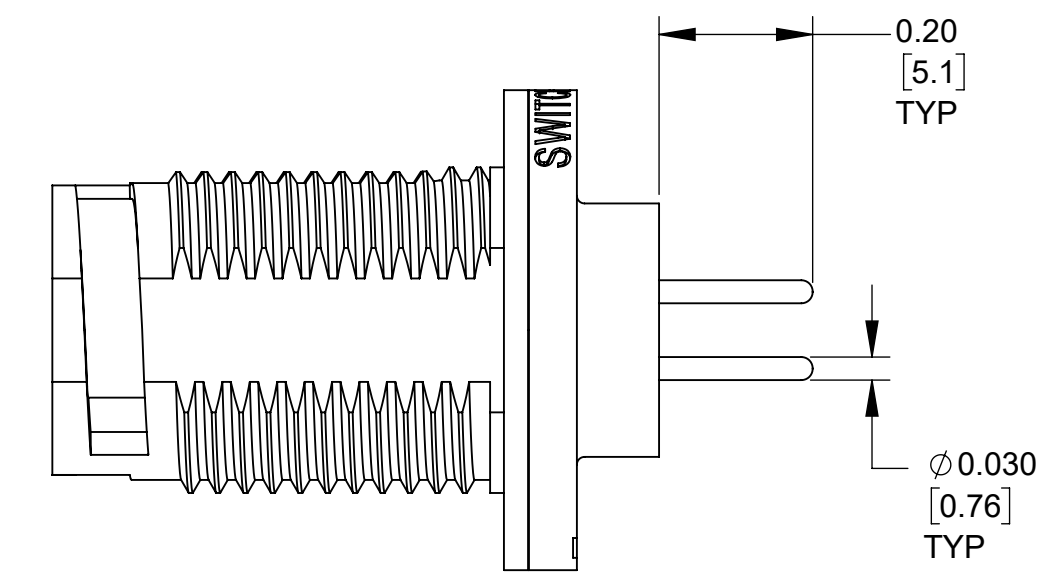
3-#20



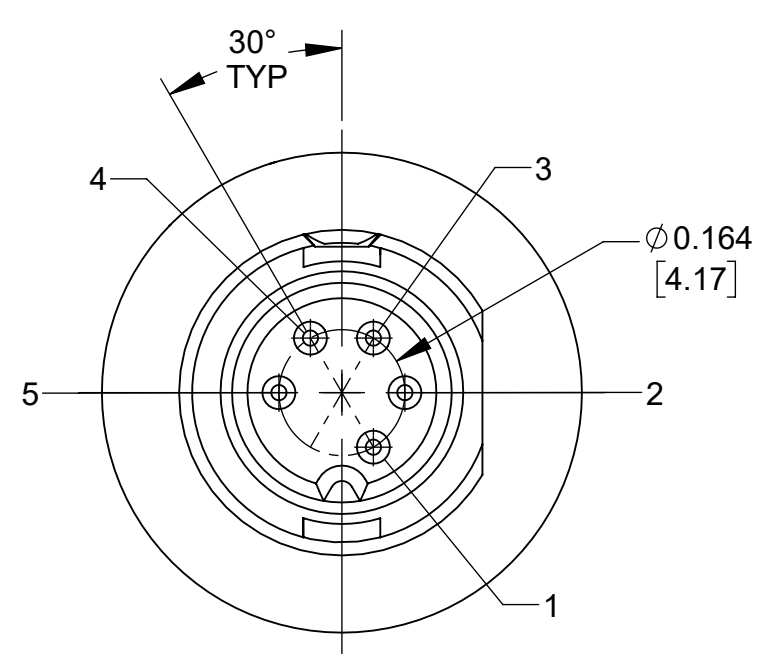
**2 and 3-#20
PIN ARRANGEMENTS
(0.046 [1.17] RECOMMENDED PCB HOLE SIZE)**



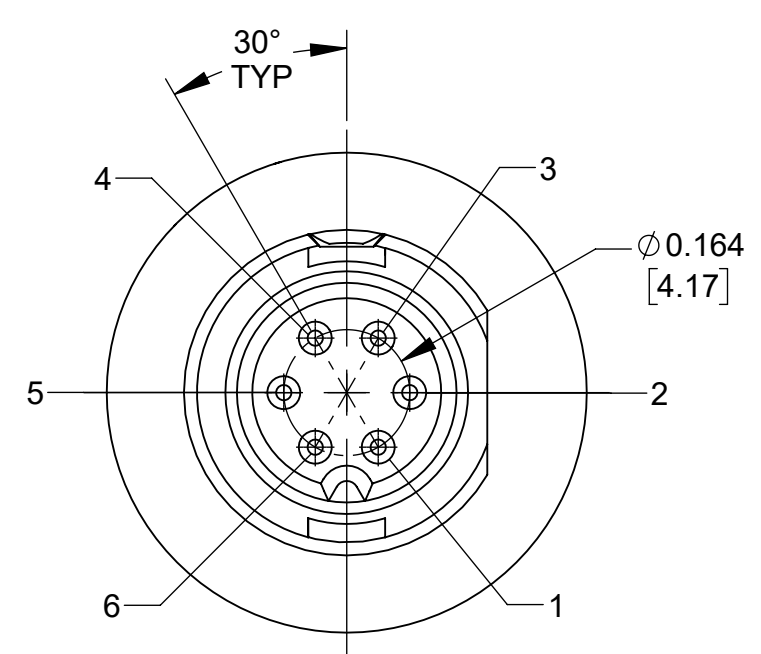
4-#22



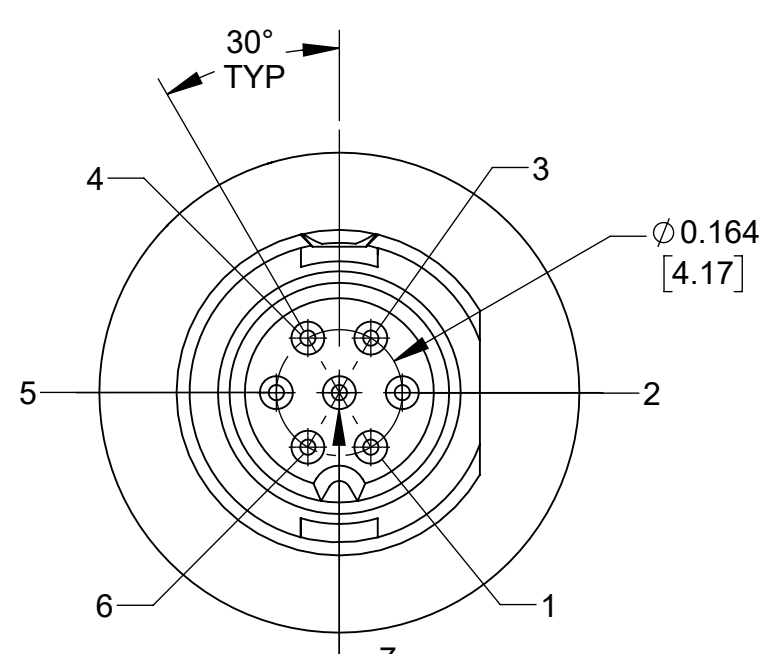
**4-#22
PIN ARRANGEMENT
(0.036 [0.91] RECOMMENDED PCB HOLE SIZE)**



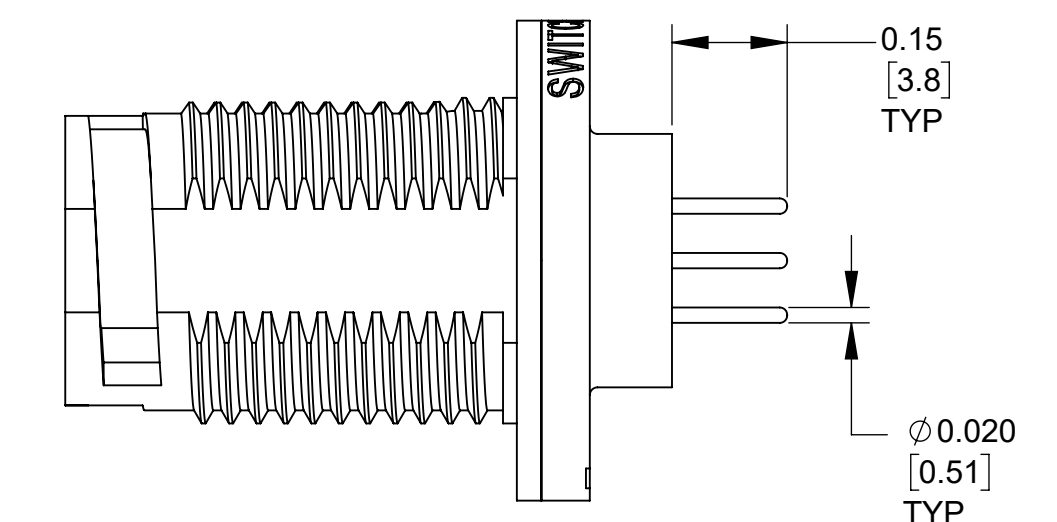
5-#26



6-#26



7-#26



**5, 6, and 7-#26
PIN ARRANGEMENTS
(0.026 [0.66] RECOMMENDED PCB HOLE SIZE)**

**CONTACT ARRANGEMENTS
PANEL CONNECTOR FRONT VIEW (PCB COMPONENT SIDE)
(RECOMMENDED PCB HOLE LAYOUT WITHIN $\pm 0.001 [0.03]$)**

CUSTOMER DRAWING

| | | |
|------------------------|-------------------------|----------|
| SCALE 1.5:1 | Switchcraft® | |
| DATE DRAWN 02/09/12 | | |
| DRAWN BY PNK | PART No. EN2P SERIES | REV A |