

8 7 6 5 4 3 2 1



EN3P2FRAPCBN
2 POSITION FEMALE - NARROW PCB

EN3P5FRAPCBN
5 POSITION FEMALE - NARROW PCB

EN3P3FRAPCBN
3 POSITION FEMALE - NARROW PCB

EN3P6FRAPCBN
6 POSITION FEMALE - NARROW PCB

EN3P4FRAPCBN
4 POSITION FEMALE - NARROW PCB

EN3P2MRAPCBN
2 POSITION MALE - NARROW PCB

EN3P5MRAPCBN
5 POSITION MALE - NARROW PCB

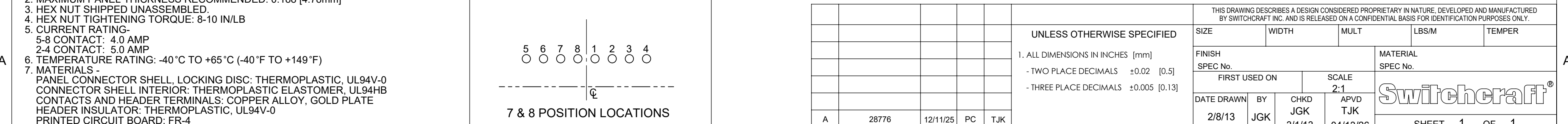
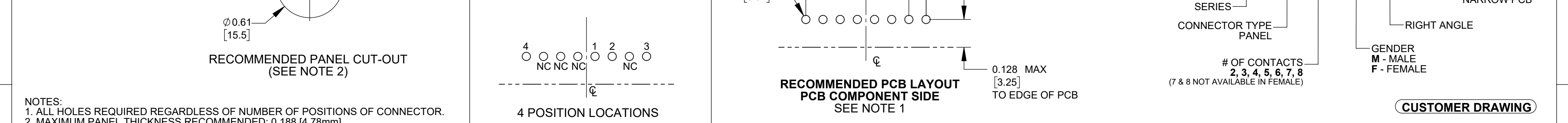
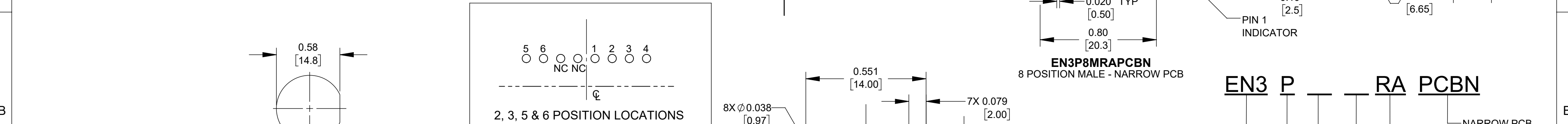
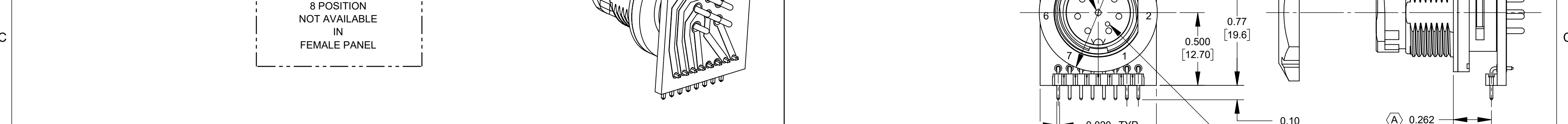
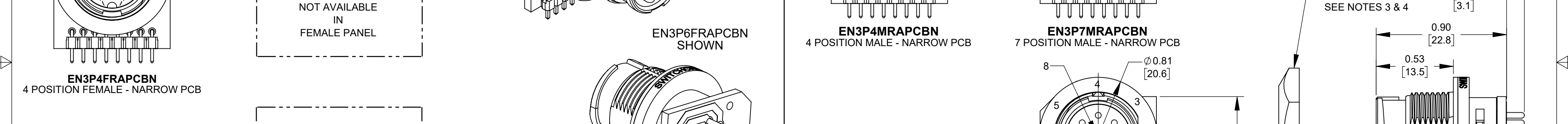
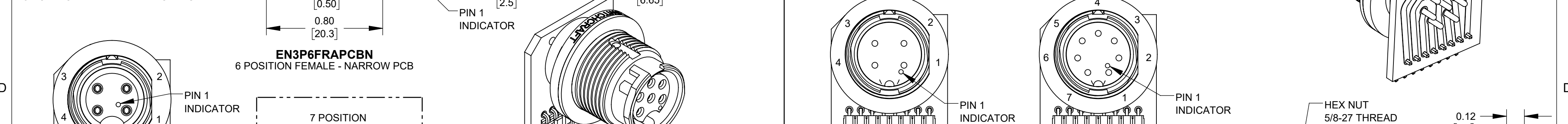
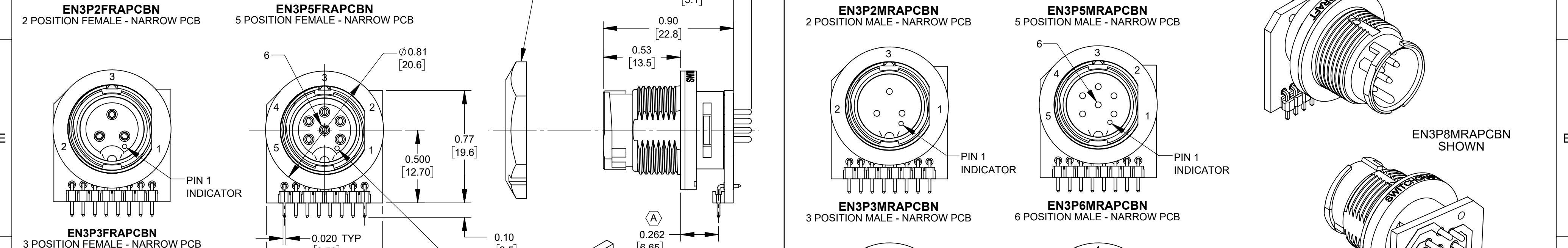
EN3P3MRAPCBN
3 POSITION MALE - NARROW PCB

EN3P6MRAPCBN
6 POSITION MALE - NARROW PCB

EN3P4MRAPCBN
4 POSITION MALE - NARROW PCB

EN3P7MRAPCBN
7 POSITION MALE - NARROW PCB

EN3P8MRAPCBN
8 POSITION MALE - NARROW PCB



NOTES:

- ALL HOLES REQUIRED REGARDLESS OF NUMBER OF POSITIONS OF CONNECTOR.
- MAXIMUM PANEL THICKNESS RECOMMENDED: 0.188 [4.78mm]
- HEX NUT SHIPPED UNASSEMBLED.
- HEX NUT TIGHTENING TORQUE: 8-10 IN/LB
- CURRENT RATING:
5-8 CONTACT: 4.0 AMP
2-4 CONTACT: 5.0 AMP
- TEMPERATURE RATING: -40°C TO +65°C (-40°F TO +149°F)
- MATERIALS -
PANEL CONNECTOR SHELL, LOCKING DISC: THERMOPLASTIC, UL94V-0
CONNECTOR SHELL INTERIOR: THERMOPLASTIC ELASTOMER, UL94HB
CONTACTS AND HEADER TERMINALS: COPPER ALLOY, GOLD PLATE
HEADER INSULATOR: THERMOPLASTIC, UL94V-0
PRINTED CIRCUIT BOARD: FR-4
- THIS PRODUCT IS RoHS COMPLIANT.