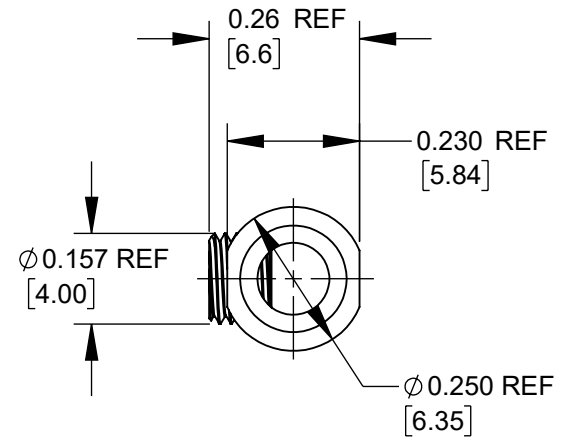
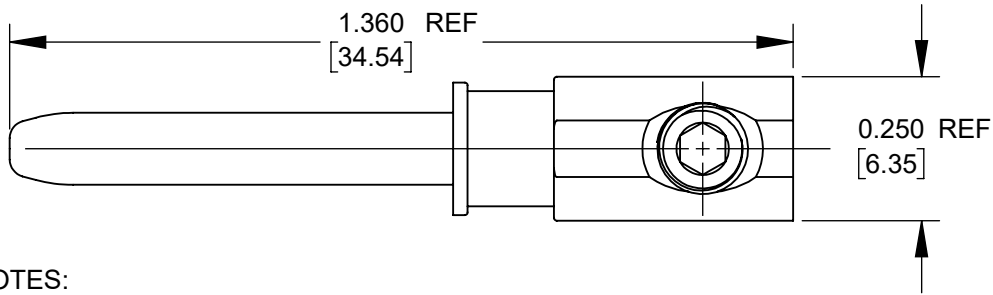


#10 MALE PIN CONTACT,
PROTECTIVE GROUND
(FMLB)

SET-SCREW
M4 x 0.5, 2,75MM LG.



NOTES:

- MATERIAL:
CONTACT - COPPER ALLOY, GOLD PLATING OVER SILVER/COPPER UNDERPLATE.
SET-SCREW - STAINLESS STEEL.
- THIS PRODUCT IS RoHS COMPLIANT.

PRELIMINARY

CUSTOMER DRAWING

					THIS DRAWING DESCRIBES A DESIGN CONSIDERED PROPRIETARY IN NATURE, DEVELOPED AND MANUFACTURED BY SWITCHCRAFT INC. AND IS RELEASED ON A CONFIDENTIAL BASIS FOR IDENTIFICATION PURPOSES ONLY.				
					SIZE	WIDTH	MULT	LBS/M	TEMPER
					FINISH			MATERIAL	
					SPEC No.			SPEC No.	
					FIRST USED ON EP7M SERIES			SCALE 3:1	
					DATE DRAWN	BY	CHKD	APVD	Switchcraft®
					1/14/26	PNK	PNK 1/14/26	* *	
0A	P-25004-1	1/14/26	PNK	*	NAME #10 MALE PIN CONTACT ASSEMBLY, FMLB, RoHS			PART No. EP7M10-G	
REV	ECO NUMBER	DATE	BY	APVD				SHEET 1 OF 1	
REVISIONS					DO NOT SCALE DRAWING				
					SolidWorks CAD File				

