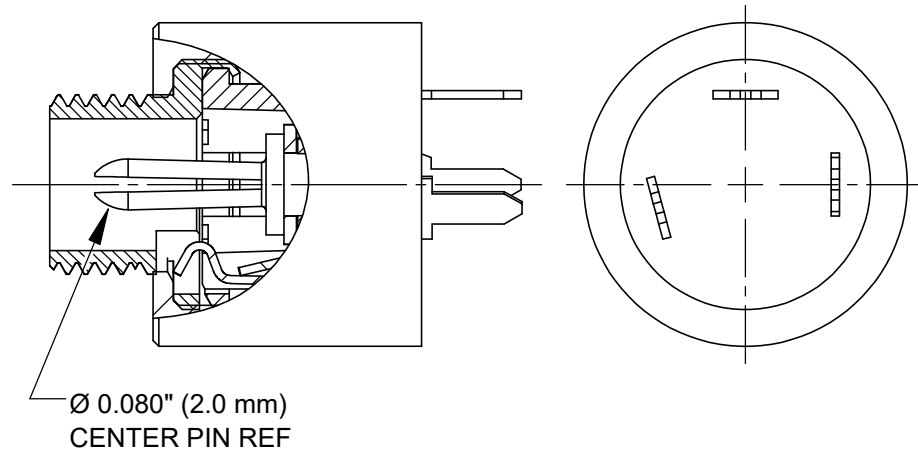
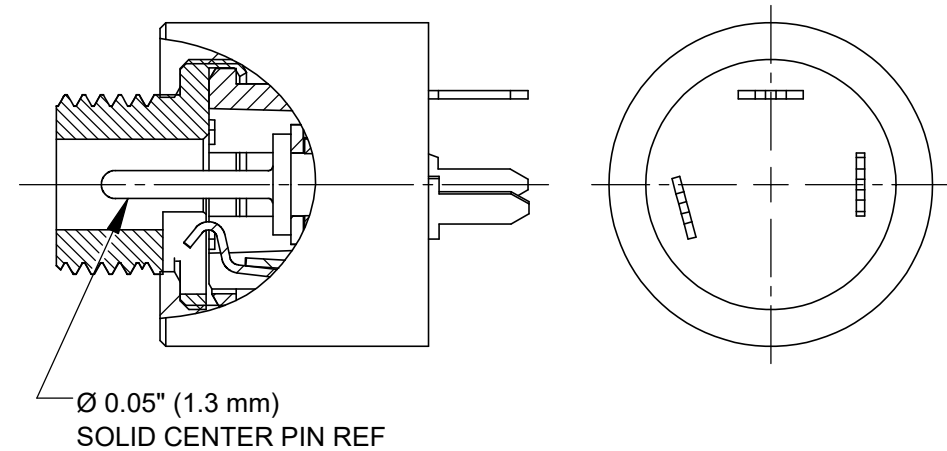


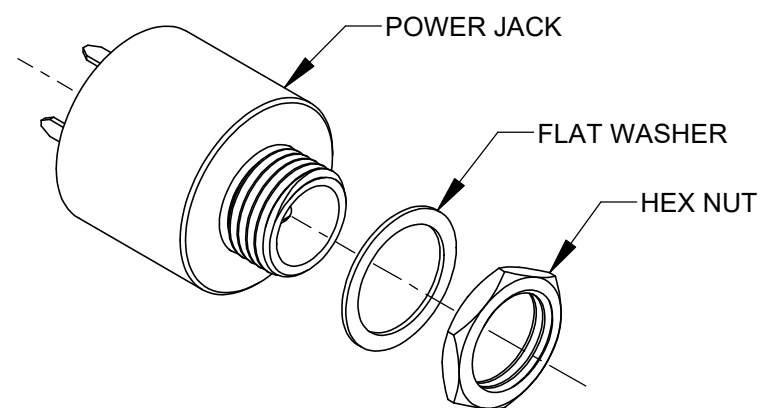
PC712AHU



PC722AHU

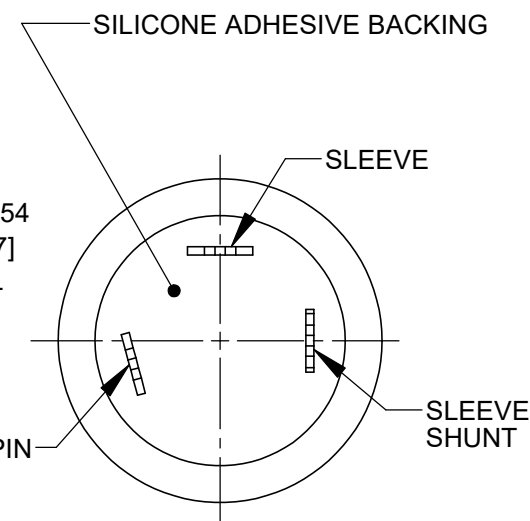
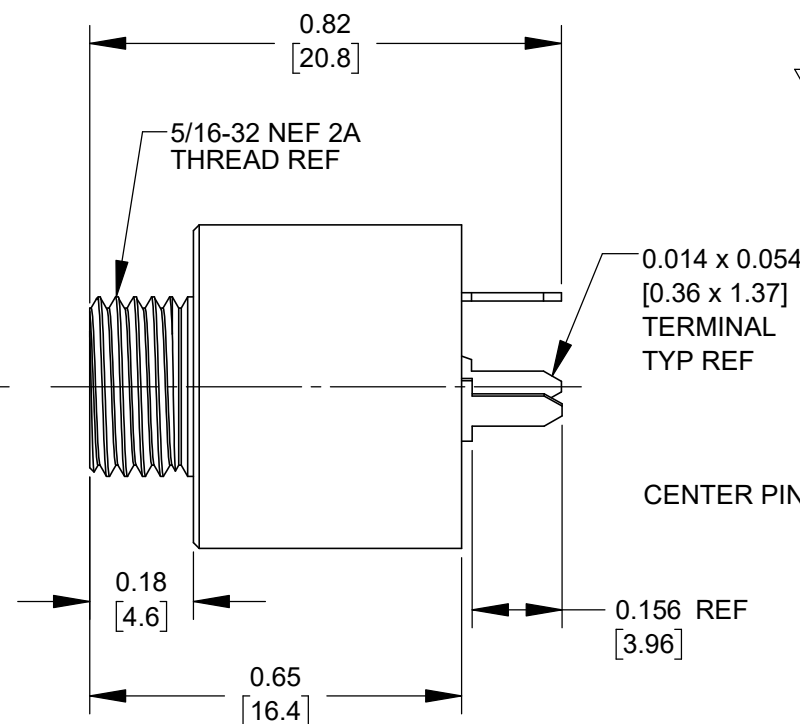
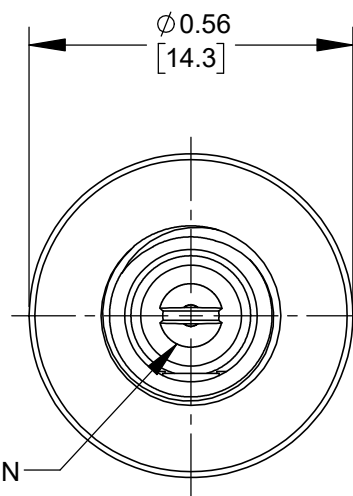
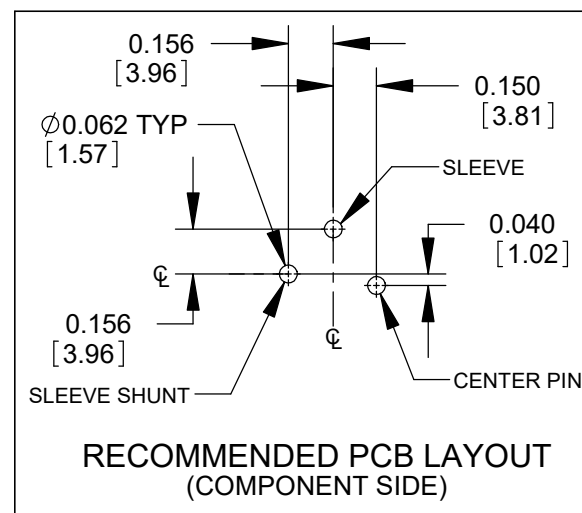


PC732AHU



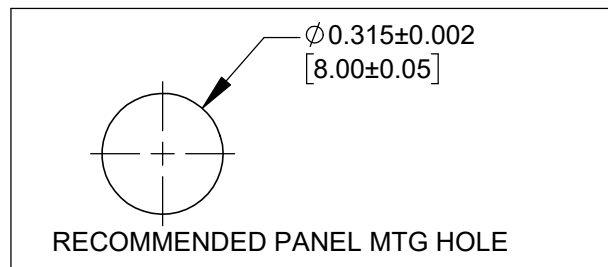
- CENTER PIN
- SLEEVE SHUNT
- SLEEVE

SCHEMATIC



NOTES:

- DIMENSIONS SHOWN FOR REFERENCE ONLY.
- HEX NUT AND FLAT WASHER SUPPLIED UNASSEMBLED.
- MATERIAL:
HOUSING, HEX NUT - COPPER ALLOY, NICKEL PLATED
INSULATOR HOUSING - THERMOPLASTIC, BIEGE
TERMINAL INSULATORS - PHENOLIC
FLAT WASHER - STEEL, NICKEL PLATED
PIN, SPRING, TERMINALS - COPPER ALLOY, SILVER PLATED
SEAL COVER, O-RING - SILICONE, BLACK
POTTING COMPOUND - SILICONE ADHESIVE, LIGHT GRAY
- IT IS RECOMMENDED THAT THE JACK MOUNTING NUT BE TIGHTENED SNUG BY HAND BEFORE APPLYING A FINAL TIGHTENING TORQUE OF 3-4 LB-IN USING HAND TOOLS ONLY. POWER DRIVER OR IMPACT DRIVERS ARE NOT RECOMMENDED.
- THESE PRODUCTS ARE RoHS COMPLIANT.



CUSTOMER DRAWING

| | | | | | | | | | | | | | | | | | |
|-----------|------------|----------|----|------|---|--|-----------|------------------------|------|------------------------|--|-------------------------|--------|--|----------|--|--|
| | | | | | <div>UNLESS OTHERWISE SPECIFIED</div> <div>1. ALL DIMENSIONS IN INCHES [mm]</div> <div>- TWO PLACE DECIMALS ±0.02 [0.5]</div> <div>- THREE PLACE DECIMALS ±0.005 [0.13]</div> | THIS DRAWING DESCRIBES A DESIGN CONSIDERED PROPRIETARY IN NATURE, DEVELOPED AND MANUFACTURED BY SWITCHCRAFT INC. AND IS RELEASED ON A CONFIDENTIAL BASIS FOR IDENTIFICATION PURPOSES ONLY. | | | | | | | | | | | |
| | | | | | | SIZE | WIDTH | | MULT | | LBS/M | | TEMPER | | | | |
| | | | | | | FINISH | | | | | | MATERIAL | | | | | |
| | | | | | | SPEC No. | | | | | | SPEC No. | | | | | |
| | | | | | | FIRST USED ON | | | | SCALE 3:1 | | <div>Switchcraft®</div> | | | | | |
| | | | | | | DATE DRAWN 5/30/24 | BY PNK | CHKD PNK 5/30/24 | | APVD SRC 5/30/24 | | | | | | | |
| A | 28689 | 07/16/24 | PC | TJK | | | | | | | | SHEET 1 OF 1 | | | | | |
| REV | ECO NUMBER | DATE | BY | APVD | NAME HT POWER JACKS STRAIGHT PC, SEALED UNMATED, RoHS | | | | | | PART No. PC712AHU PC722AHU PC732AHU | | | | REV A | | |
| REVISIONS | | | | | DO NOT SCALE DRAWING | | | | | | | | | | | | |