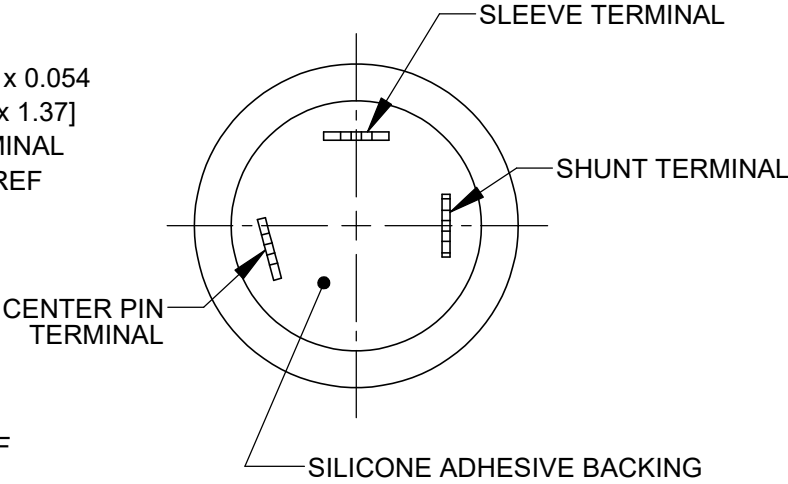
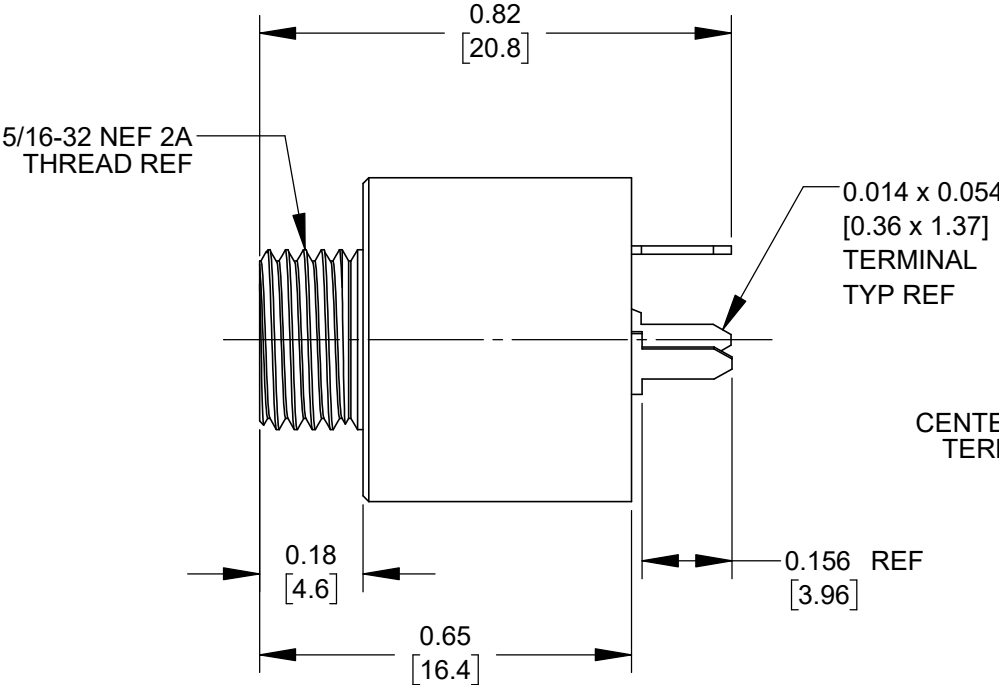
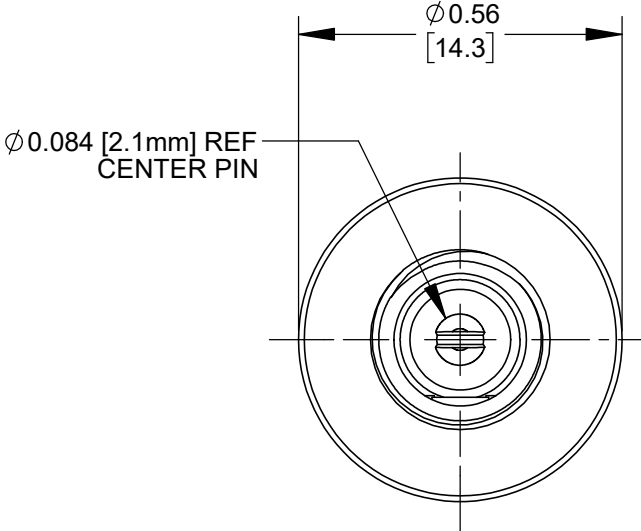
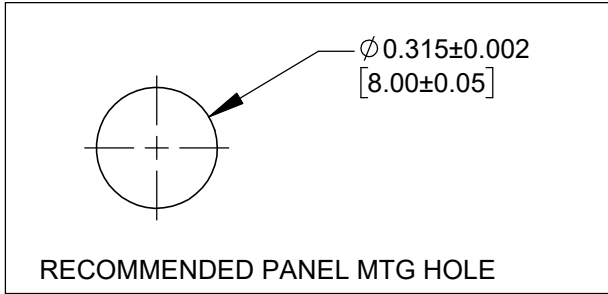
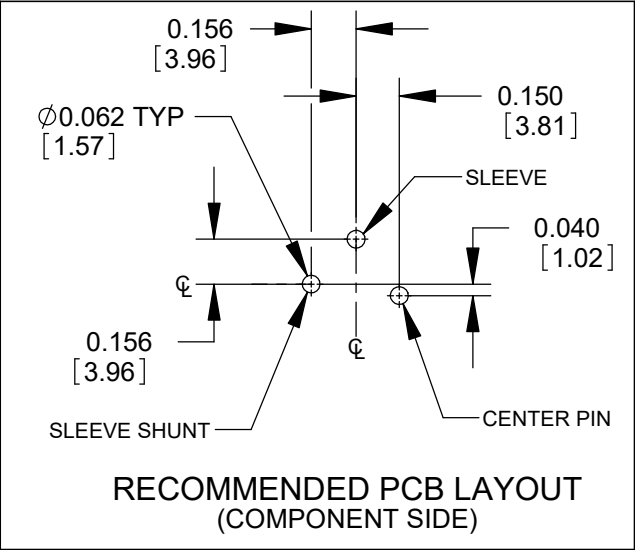
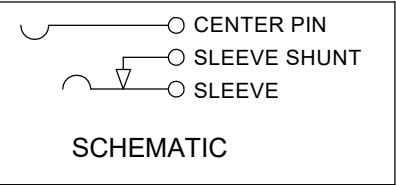


PART NUMBER	DESCRIPTION	SWITCHCRAFT MATING 2.1mm POWER PLUGS
PC721AU	2.1mm POWER JACK, STRAIGHT PC	762, 763, 762K, 763K



- NOTES:
- DIMENSIONS SHOWN FOR REFERENCE ONLY.
 - HEX NUT AND FLAT WASHER SUPPLIED UNASSEMBLED.
 - MATERIAL:
HOUSING, HEX NUT - COPPER ALLOY, NICKEL PLATED
INSULATOR HOUSING - THERMOPLASTIC, RED
TERMINAL INSULATORS - PHENOLIC
FLAT WASHER - STEEL, NICKEL PLATED
PIN, SPRING, TERMINALS - COPPER ALLOY, SILVER PLATED
SEAL COVER, O-RING - SILICONE, BLACK
POTTING COMPOUND - SILICONE ADHESIVE, LIGHT GRAY
 - IT IS RECOMMENDED THAT THE JACK MOUNTING NUT BE TIGHTENED SNUG BY HAND BEFORE APPLYING A FINAL TIGHTENING TORQUE OF 3-4 LB-IN USING HAND TOOLS ONLY. POWER DRIVER OR IMPACT DRIVERS ARE NOT RECOMMENDED.
 - THESE PRODUCTS ARE RoHS COMPLIANT.

CUSTOMER DRAWING

					<div>UNLESS OTHERWISE SPECIFIED</div> <div>1. ALL DIMENSIONS IN INCHES [mm]</div> <div>- TWO PLACE DECIMALS ±0.02 [0.5]</div> <div>- THREE PLACE DECIMALS ±0.005 [0.13]</div>	THIS DRAWING DESCRIBES A DESIGN CONSIDERED PROPRIETARY IN NATURE, DEVELOPED AND MANUFACTURED BY SWITCHCRAFT INC. AND IS RELEASED ON A CONFIDENTIAL BASIS FOR IDENTIFICATION PURPOSES ONLY.									
						SIZE	WIDTH		MULT		LBS/M		TEMPER		
						FINISH						MATERIAL			
						SPEC No.						SPEC No.			
						FIRST USED ON				SCALE		<div>Switchcraft®</div>			
										3:1					
A	28689	07/16/24	PC	TJK		DATE DRAWN	BY	CHKD		APVD		SHEET 1 OF 1			
					5/30/24	PNK	PNK		SRC						
							5/30/24		5/30/24						
REV	ECO NUMBER	DATE	BY	APVD	NAME						PART No.				REV
REVISIONS					2.1mm POWER JACKS						PC721AU				A
					STRAIGHT PC, SEALED UNMATED, RoHS										
					DO NOT SCALE DRAWING										