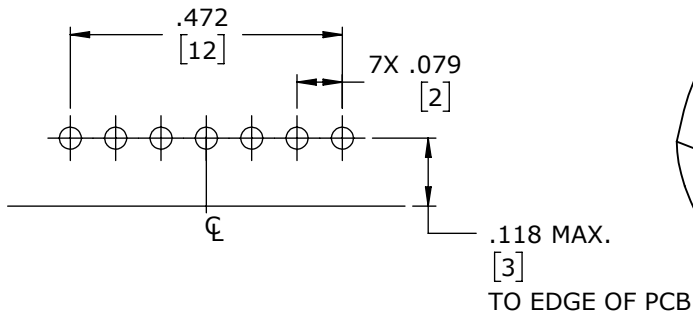
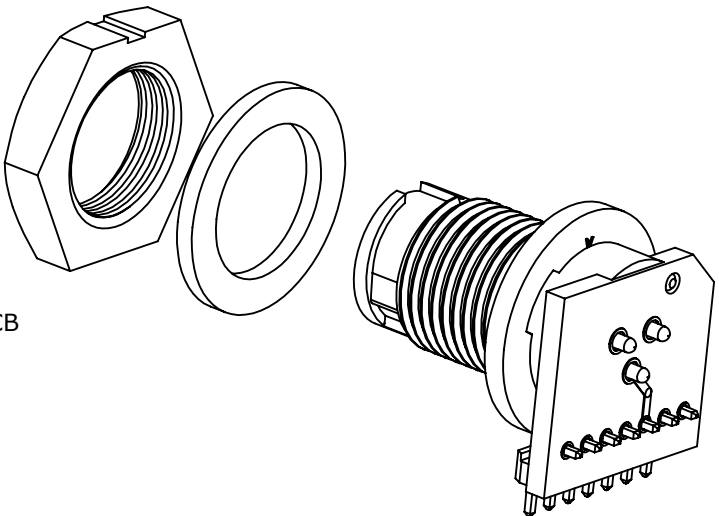


- NOTES:
- 1. PANEL CONNECTORS TO BE PACKED IN PARTITIONED BOX, 100 PC PER BOX.
 - 2. ALL HOLES REQUIRED REGARDLESS OF NUMBER OF POSITIONS OF CONNECTOR.
 - 3. HEX NUT AND GASKET SHIPPED UNASSEMBLED
 - 4. HEX NUT TIGHTENING TORQUE: 9 IN./LB MAX.
 - 5. CURRENT RATING:
 - 2 CONTACT: 6.5 AMP
 - 3 CONTACT: 6.0 AMP
 - 6. TEMPERATURE RATING: -40°C TO +85°C (-40°F TO +185°F)
 - 7. MATERIALS:
 - PANEL CONNECTOR, HEX NUT, SPACER: UV PBT
 - GASKET: RUBBER
 - CONTACTS: COPPER ALLOY, GOLD PLATED
 - PCB: FR-4
 - HEADER INSULATOR: THERMOPLASTIC, UL94V-0
 - 8. REAR WELL OF PANEL CONNECTOR TO BE FILLED WITH EPOXY.
 - 9. SEE DRAWING HPMCSTD FOR HOLE PATTERN.
 - 10. ALL DIMENSIONS ARE FOR REFERENCE ONLY UNLESS TOLERANCE SPECIFIED.



RECOMMENDED PCB LAYOUT
PCB COMPONENT SIDE
NOTE 2



W17261-3PG-3ES SHOWN

ASS'Y P/N	CONTACT QTY.
W17261-2PG-3ES	2
W17261-3PG-3ES	3

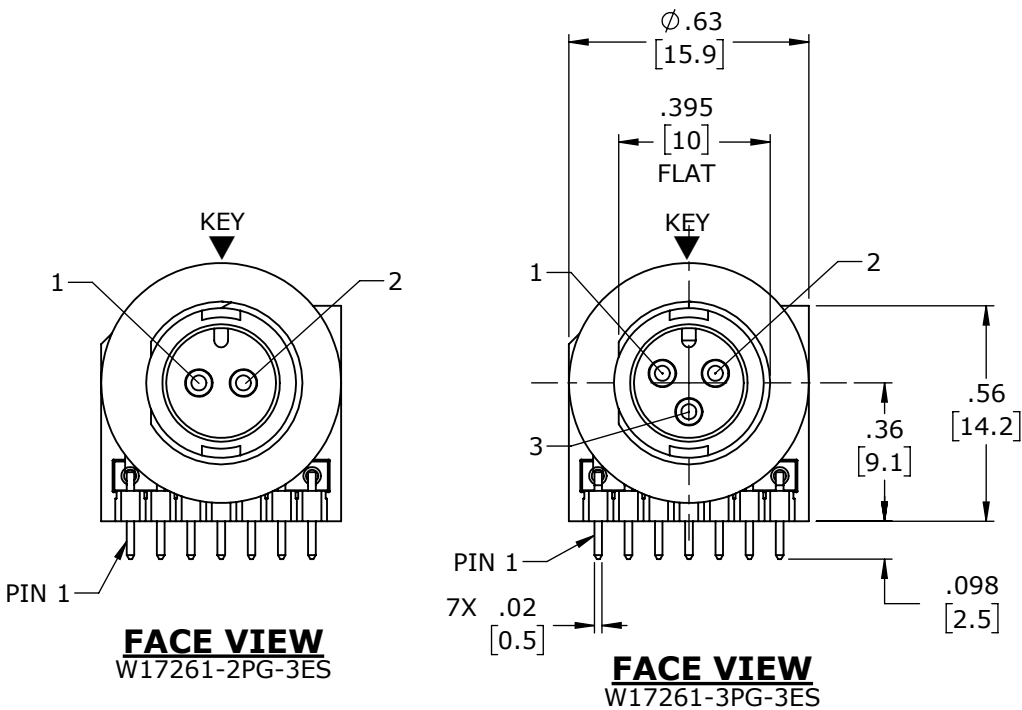
NUMBER OF CONTACTS



2 POSITION LOCATIONS

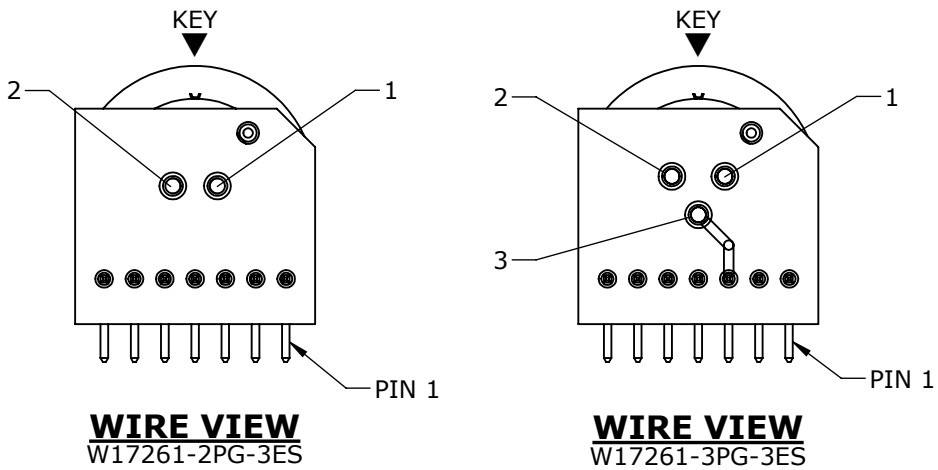


3 POSITION LOCATIONS



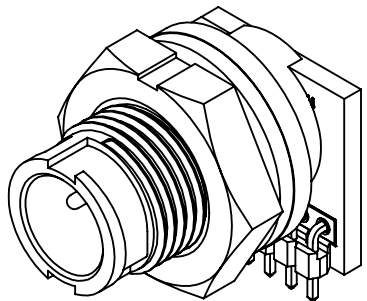
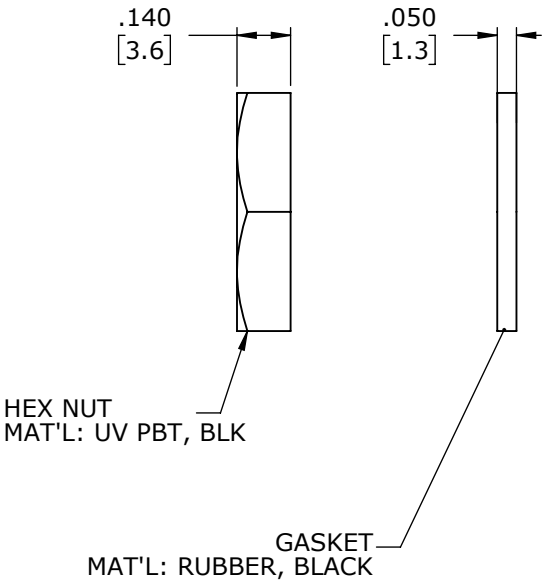
FACE VIEW
W17261-2PG-3ES

FACE VIEW
W17261-3PG-3ES

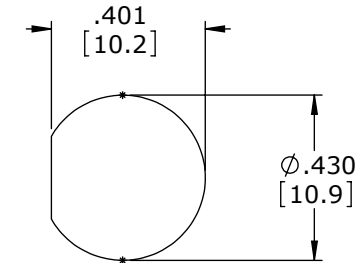
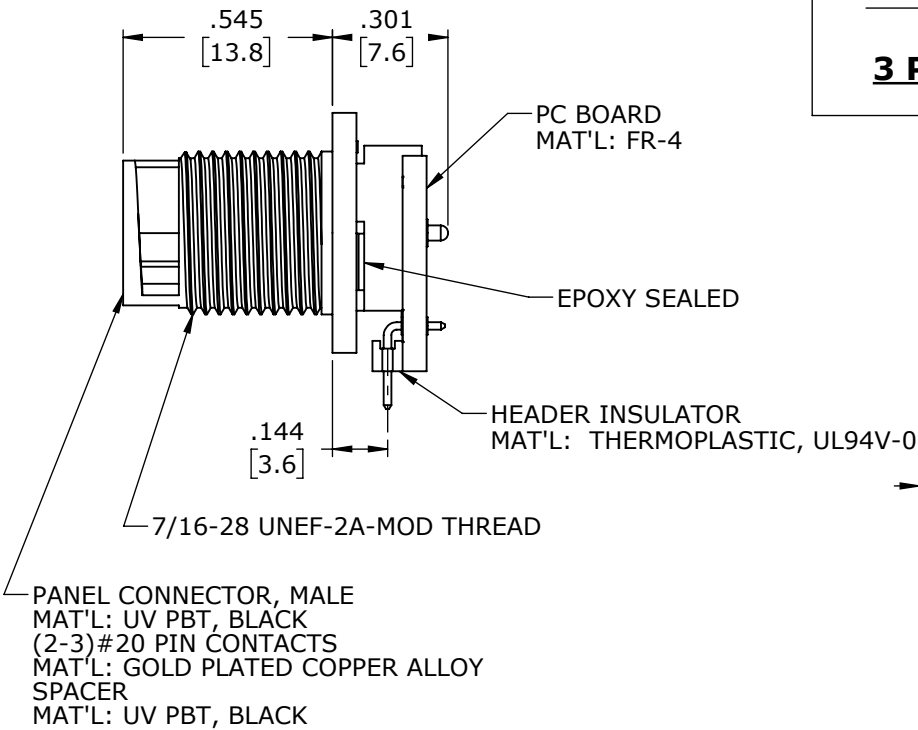


WIRE VIEW
W17261-2PG-3ES

WIRE VIEW
W17261-3PG-3ES



SHOWN ASSEMBLED
FOR CUSTOMER REFERENCE ONLY



**RECOMMENDED
PANEL CUT-OUT
TOLERANCE: ±.003**

CUSTOMER APPROVAL

THIS DOCUMENT CONTAINS CONFIDENTIAL INFORMATION PROPRIETARY TO CONXALL CORPORATION. ANY REPRODUCTION, DISCLOSURE, OR USE OF THIS DOCUMENT /INFORMATION IS EXPRESSLY PROHIBITED UNLESS AUTHORIZED IN WRITING BY CONXALL CORPORATION.

APPROVED BY: _____
DATE: _____

RoHS COMPLIANT

A	AN	10-31-25	DRAWING RELEASED PER PDR P-21001-4	
	JWM	08-29-25	INITIAL RELEASE PER 21001	
REV.	INIT.	DATE	DESCRIPTION	
AB		08-13-21	ORIG. DRAWN BY: DATE: 08-13-21	
ALL INFORMATION ILLUSTRATED IS THE PROPERTY OF CONXALL CORPORATION. UNAUTHORIZED DUPLICATION OR DISTRIBUTION OF THIS DOCUMENT IS PROHIBITED.			CHECKED BY:	
ALL UNITS ARE IN FEET, INCHES, FRACTION OF INCHES AND DECIMALS.			APPROVED BY:	
= CRITICAL CHARACTERISTIC FLAG PER SPEC. XXXX			TITLE: PANEL CONNECTOR ASSEMBLY (2-3) #20 PIN CONTACTS MICRO-CON-X STANDARD PRODUCT	
SCALE	SIZE	SHEET	CUSTOMER: STANDARD PRODUCT	
NTS	B	1 OF 1	PART NUMBER: W17261-XPG-3ES	
FILE:	DIRECTORY:		REV A	
W17261-XPG-3ES	SLW			