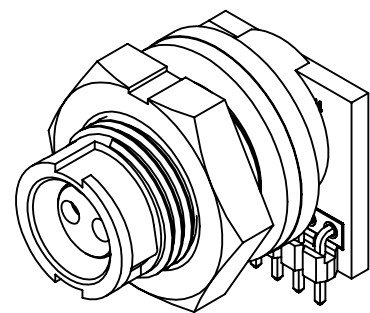
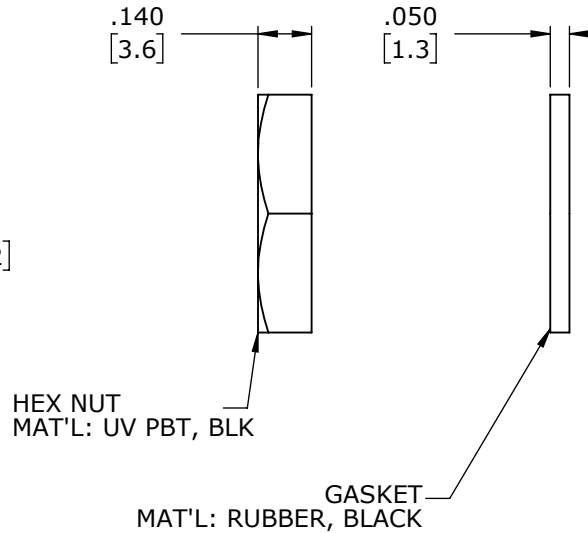
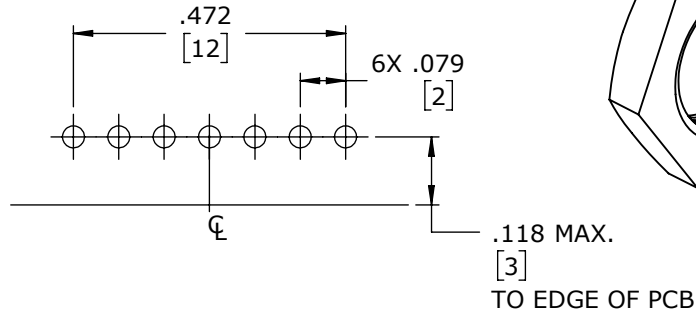
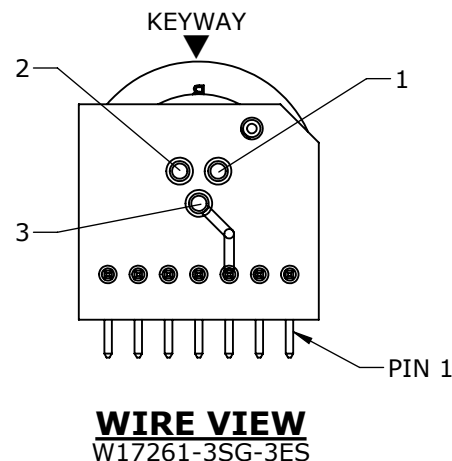
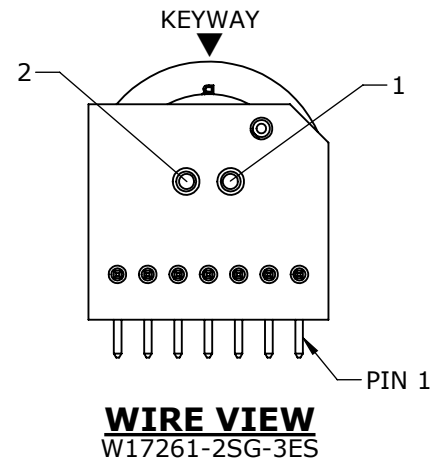
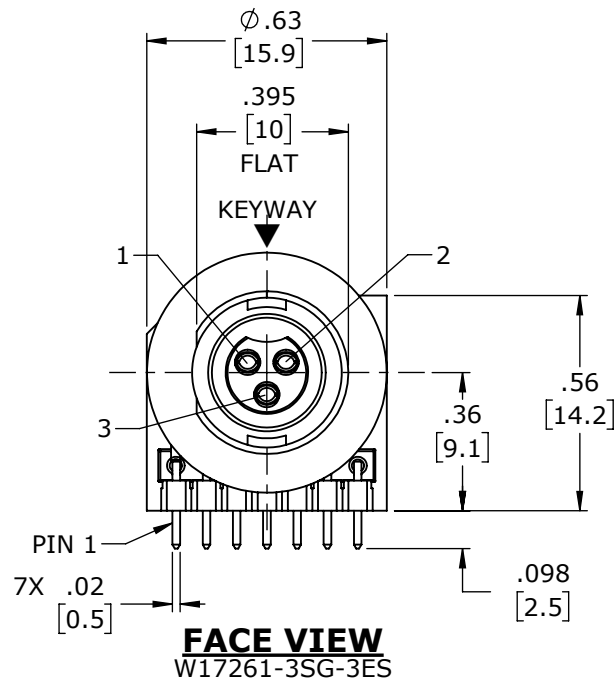
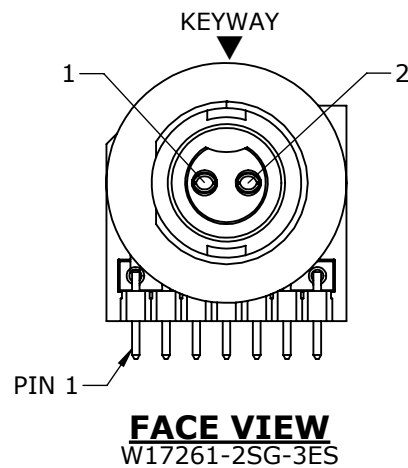
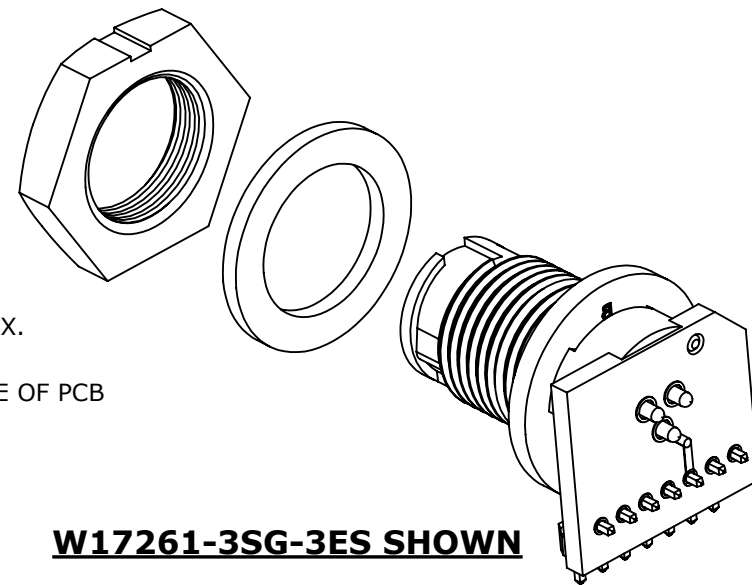


- NOTES:
1. PANEL CONNECTORS TO BE PACKED IN PARTITIONED BOX, 100 PC PER BOX.
 2. ALL HOLES REQUIRED REGARDLESS OF NUMBER OF POSITIONS OF CONNECTOR.
 3. HEX NUT AND GASKET SHIPPED UNASSEMBLED
 4. HEX NUT TIGHTENING TORQUE: 9 IN./LB MAX.
 5. CURRENT RATING:
2 CONTACT: 6.5 AMP
3 CONTACT: 6.0 AMP
 6. TEMPERATURE RATING: -40°C TO +85°C (-40°F TO +185°F)
 7. MATERIALS:
PANEL CONNECTOR, HEX NUT, SPACER: UV PBT
GASKET: RUBBER
CONTACTS: COPPER ALLOY, GOLD PLATED
PCB: FR-4
HEADER INSULATOR: THERMOPLASTIC, UL94V-0
 8. REAR WELL OF PANEL CONNECTOR TO BE FILLED WITH EPOXY.
 9. SEE DRAWING HPMCSTD FOR HOLE PATTERN.
 10. ALL DIMENSIONS ARE FOR REFERENCE ONLY UNLESS TOLERANCE SPECIFIED.

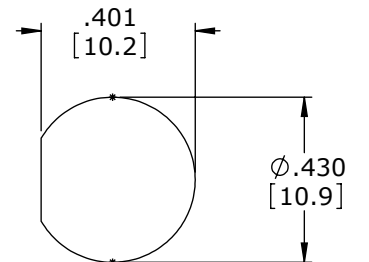
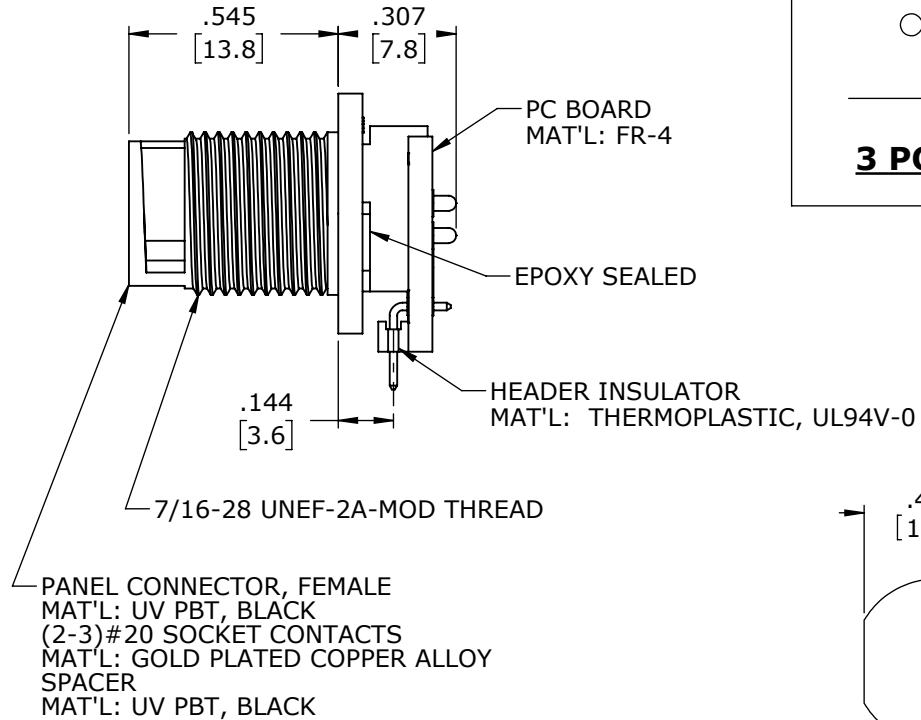
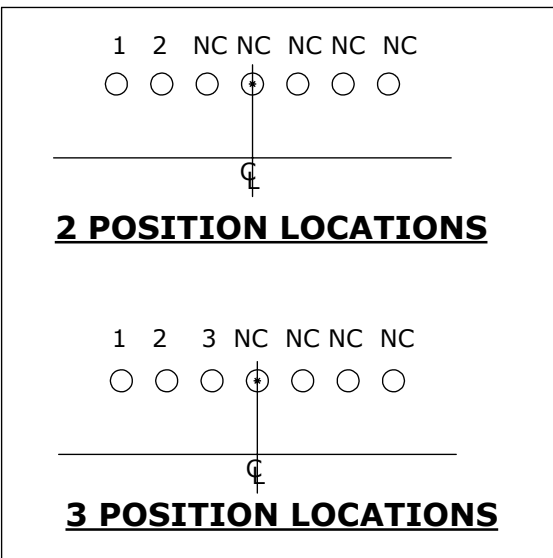


SHOWN ASSEMBLED
FOR CUSTOMER REFERENCE ONLY



ASS'Y P/N	CONTACT QTY.
W17261-2SG-3ES	2
W17261-3SG-3ES	3

NUMBER OF CONTACTS




CUSTOMER APPROVAL

THIS DOCUMENT CONTAINS CONFIDENTIAL INFORMATION PROPRIETARY TO CONXALL CORPORATION. ANY REPRODUCTION, DISCLOSURE, OR USE OF THIS DOCUMENT /INFORMATION IS EXPRESSLY PROHIBITED UNLESS AUTHORIZED IN WRITING BY CONXALL CORPORATION.

APPROVED BY: _____

DATE: _____

A	AN	10-31-25	DRAWING RELEASED PER PDR P-21001-4		
	JWM	08-29-25	INITIAL RELEASE PER 21001		
REV.	INIT.	DATE	DESCRIPTION		
ALL INFORMATION ILLUSTRATED IS THE PROPERTY OF "CONXALL CORPORATION." UNAUTHORIZED DUPLICATION OR DISTRIBUTION OF THIS DOCUMENT IS PROHIBITED.			ORIG. DRAWN BY: DATE:		 601 E. WILDWOOD VILLA PARK, IL 60181
			AB 08-12-21		
ALL UNITS ARE IN FEET, INCHES, FRACTION OF INCHES AND DECIMALS.			CHECKED BY:		
= CRITICAL CHARACTERISTIC FLAG PER SPEC. XXXX			APPROVED BY:		
▷	SCALE	SIZE	SHEET		PART NUMBER: W17261-XSG-3ES
	NTS	B	1 OF 1		
	FILE: W17261-XSG-3ES	DIRECTORY: SLW		REV A	

DIMENSIONS IN BRACKET [] ARE METRIC.

RoHS COMPLIANT