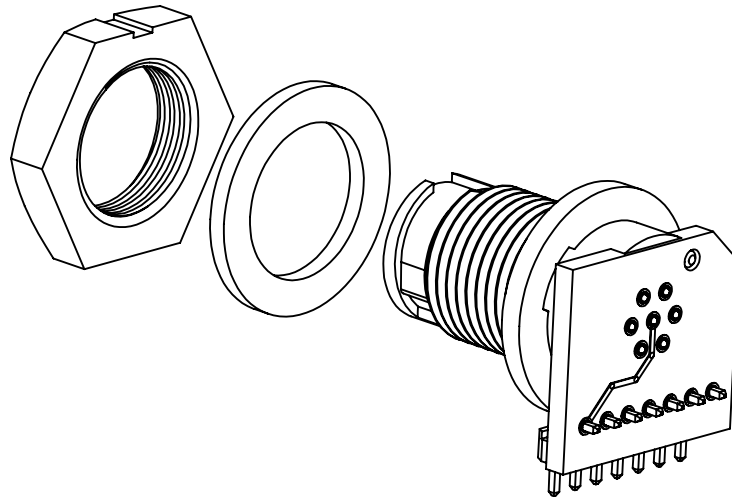


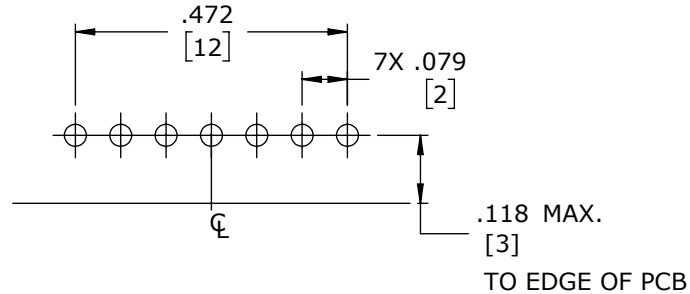
**NOTES:**

1. PANEL CONNECTORS TO BE PACKED IN PARTITIONED BOX, 100 PC PER BOX.
2. ALL HOLES REQUIRED REGARDLESS OF NUMBER OF POSITIONS OF CONNECTOR.
3. HEX NUT AND GASKET SHIPPED UNASSEMBLED
4. HEX NUT TIGHTENING TORQUE: 9 IN./LB MAX.
5. CURRENT RATING: 3.0 AMP
6. TEMPERATURE RATING: -40°C TO +85°C (-40°F TO +185°F)
7. MATERIALS:  
PANEL CONNECTOR, HEX NUT, SPACER: UV PBT  
GASKET: RUBBER  
CONTACTS: COPPER ALLOY, GOLD PLATED  
PCB: FR-4  
HEADER INSULATOR: THERMOPLASTIC, UL94V-0
8. REAR WELL OF PANEL CONNECTOR TO BE FILLED WITH EPOXY.
9. SEE DRAWING HPMCSTD FOR HOLE PATTERN.
10. ALL DIMENSIONS ARE FOR REFERENCE ONLY UNLESS TOLERANCE SPECIFIED.



ASS'Y P/N	CONTACT QTY.	KEY STYLE
W17961-5PG-3ES	5	A-KEY
W17961-6PG-3ES	6	B-KEY
W17961-7PG-3ES	7	A-KEY

NUMBER OF CONTACTS

**RECOMMENDED PCB LAYOUT**PCB COMPONENT SIDE  
NOTE 2

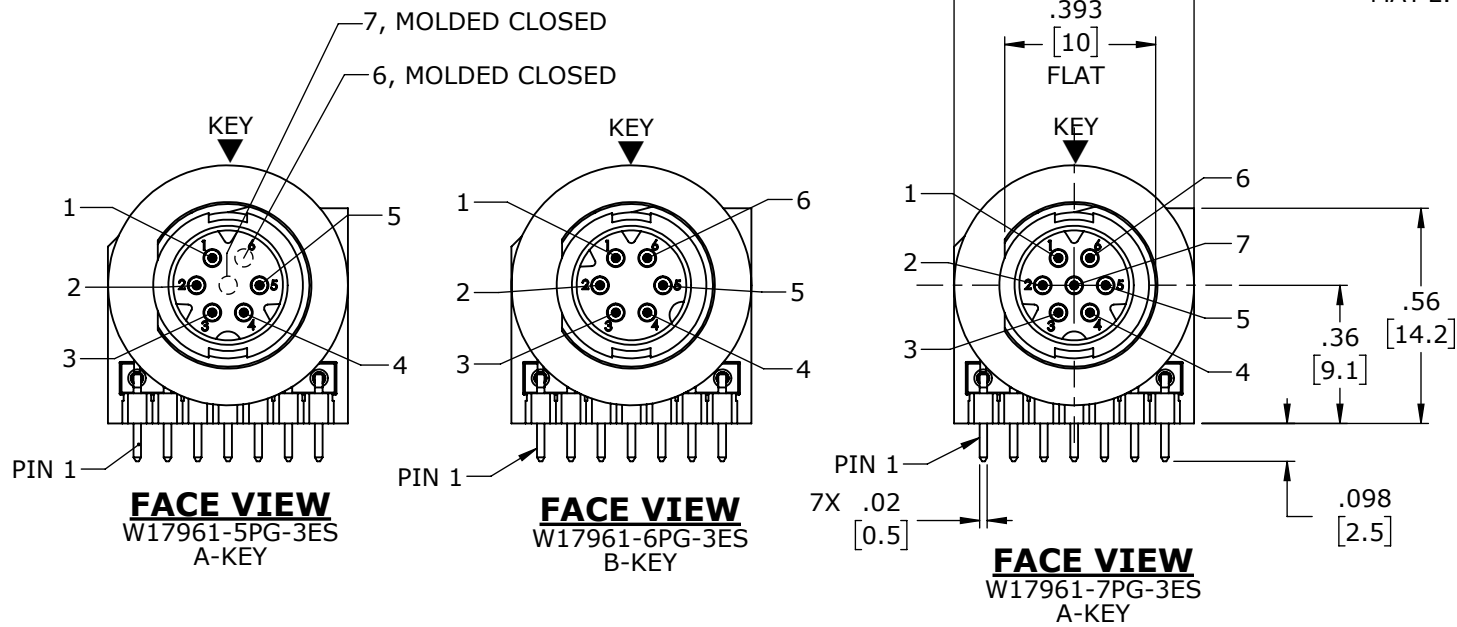
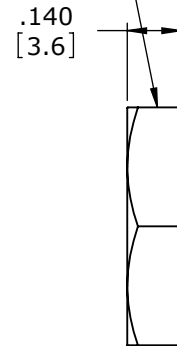
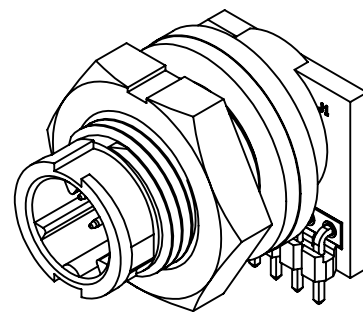
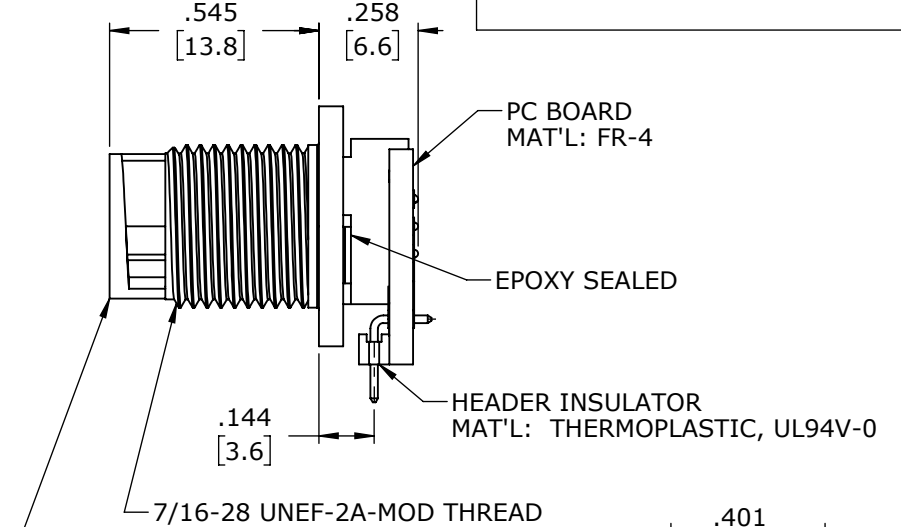
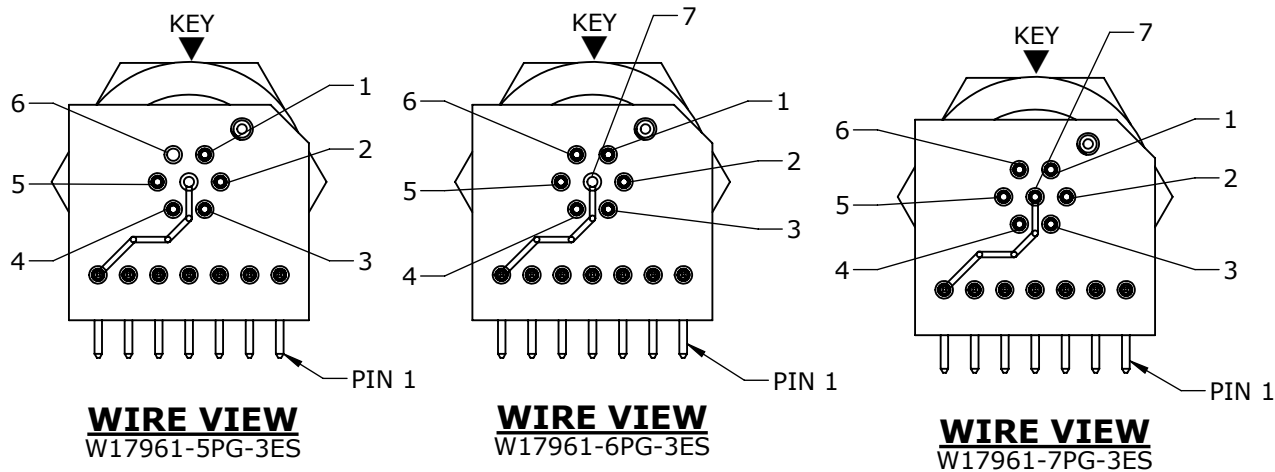
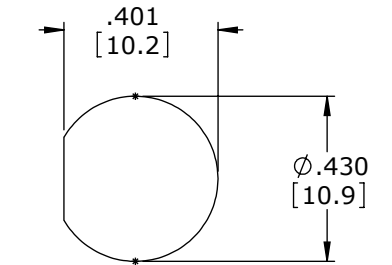
1 2 3 4 5 NC NC  
○ ○ ○ ○ ○ ○ ○

**5 POSITION LOCATIONS**

1 2 3 4 5 6 NC  
○ ○ ○ ○ ○ ○ ○

**6 POSITION LOCATIONS**

1 2 3 4 5 6 7  
○ ○ ○ ○ ○ ○ ○

**7 POSITION LOCATIONS**HEX NUT  
MAT'L: UV PBT, BLACKGASKET  
MAT'L: RUBBER, BLACK**SHOWN ASSEMBLED**  
FOR CUSTOMER REFERENCE ONLYPANEL CONNECTOR, MALE  
MAT'L: UV PBT, BLACK  
(5-7)#26 PIN CONTACTS  
MAT'L: GOLD PLATED COPPER ALLOY  
SPACER  
MAT'L: UV PBT, BLACK**RECOMMENDED  
PANEL CUT-OUT**  
TOLERANCE: ±.003**CUSTOMER APPROVAL**

THIS DOCUMENT CONTAINS CONFIDENTIAL INFORMATION PROPRIETARY TO CONXALL CORPORATION. ANY REPRODUCTION, DISCLOSURE, OR USE OF THIS DOCUMENT /INFORMATION IS EXPRESSLY PROHIBITED UNLESS AUTHORIZED IN WRITING BY CONXALL CORPORATION.

APPROVED BY: \_\_\_\_\_

DATE: \_\_\_\_\_

A	AN	10-06-25	DRAWING RELEASED PER PDR P-21001-4				
	JWM	08-29-25	INITIAL RELEASE PER 21001				
REV.	INIT.	DATE	DESCRIPTION				
<div>ALL INFORMATION ILLUSTRATED IS THE PROPERTY OF "CONXALL CORPORATION." UNAUTHORIZED DUPLICATION OR DISTRIBUTION OF THIS DOCUMENT IS PROHIBITED.</div> <div>ALL UNITS ARE IN FEET, INCHES, FRACTION OF INCHES AND DECIMALS.</div>			<div>ORIG. DRAWN BY:    DATE:</div> <div>AB                      07-27-21</div>		<div>conxall</div> <div>601 E. WILDWOOD VILLA PARK, IL 60181</div>		
			CHECKED BY:				
<div>APPROVED BY:</div>			TITLE: PANEL CONNECTOR ASSEMBLY (5-7) #26 PIN CONTACTS MICRO-CON-X, A-KEY & B-KEY				
			CUSTOMER: STANDARD PRODUCT				
▷	= CRITICAL CHARACTERISTIC FLAG PER SPEC. XXXX		SCALE	SIZE	SHEET	PART NUMBER:	REV
			NTS	B	1 OF 1		
FILE:			DIRECTORY:		W17961-XPG-3ES		
W17961-XPG-3ES			SLW				

DIMENSIONS IN BRACKET [ ] ARE METRIC.

**RoHS COMPLIANT**