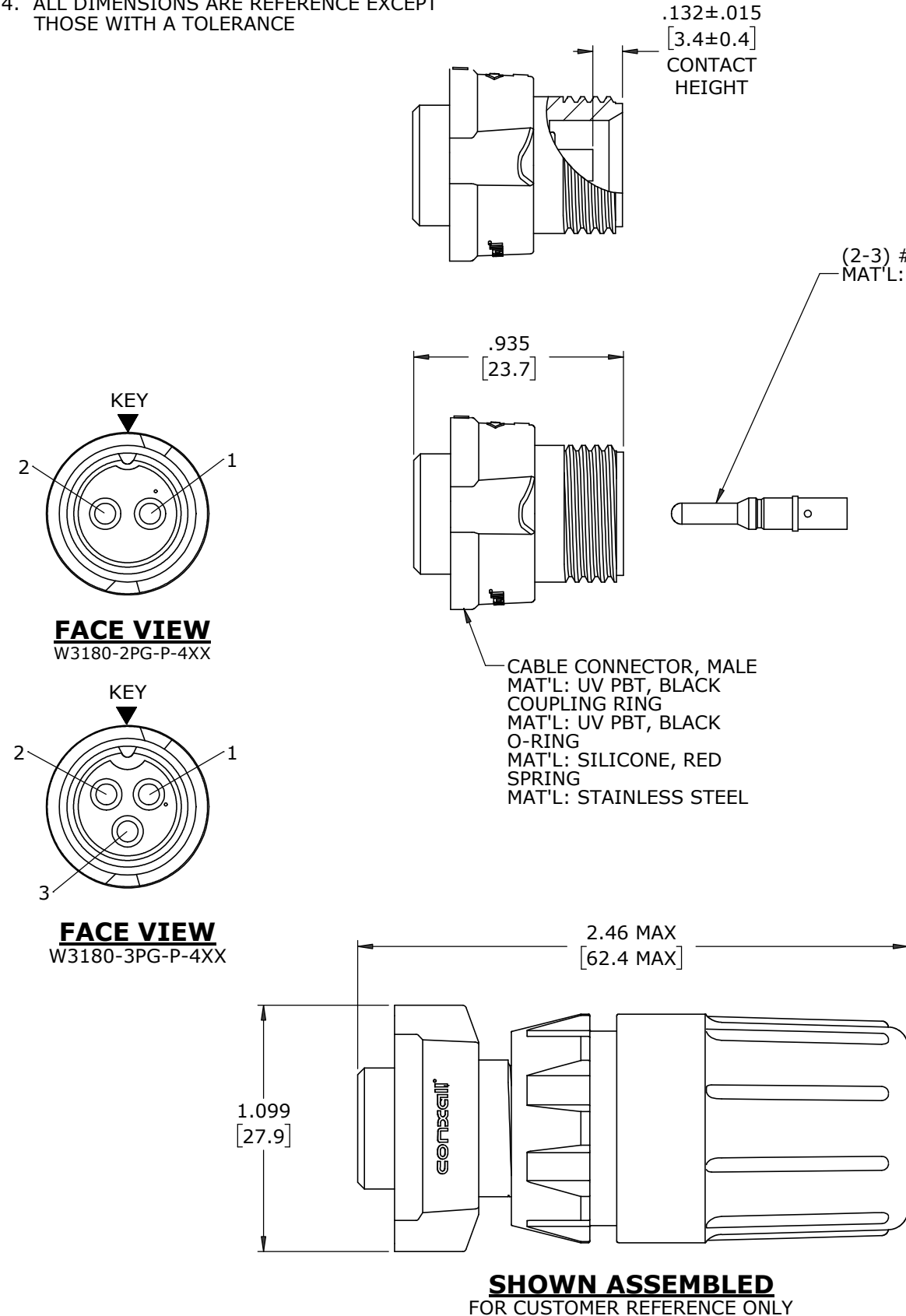
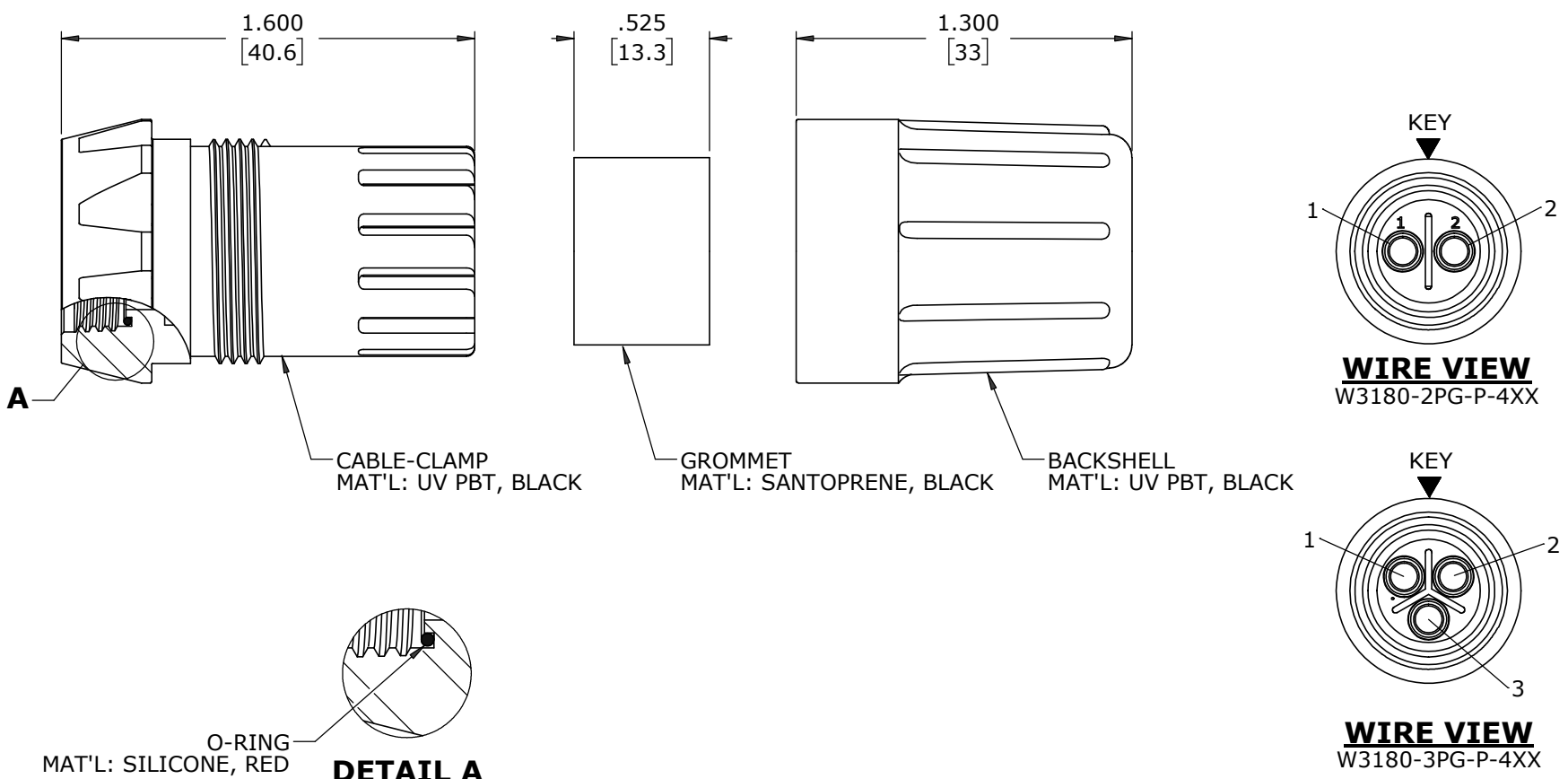


- NOTES:
- 1. ALL PARTS ARE BULK PACKED
 - 2. RED SILICONE O-RING IS LUBRICATED AND INSTALLED INTO GROOVE OF CABLE CLAMP
 - 3. CONTACTS SHIPPED UNASSEMBLED
 - 4. ALL DIMENSIONS ARE REFERENCE EXCEPT THOSE WITH A TOLERANCE



CONNECTOR P/N	GROMMET I.D. / CABLE O.D. RANGE	CONTACTS
W3180-2PG-P-440	0.400 [10.2] / 0.320 - 0.400 [8.1 - 10.2]	2 #12
W3180-2PG-P-450	0.500 [12.7] / 0.400 - 0.500 [10.2 - 12.7]	
W3180-2PG-P-457	0.570 [14.5] / 0.500 - 0.570 [12.7 - 14.5]	
W3180-3PG-P-440	0.400 [10.2] / 0.320 - 0.400 [8.1 - 10.2]	3 #12
W3180-3PG-P-450	0.500 [12.7] / 0.400 - 0.500 [10.2 - 12.7]	
W3180-3PG-P-457	0.570 [14.5] / 0.500 - 0.570 [12.7 - 14.5]	



CUSTOMER APPROVAL

THIS DOCUMENT CONTAINS CONFIDENTIAL INFORMATION PROPRIETARY TO CONXALL CORPORATION. ANY REPRODUCTION, DISCLOSURE, OR USE OF THIS DOCUMENT /INFORMATION IS EXPRESSLY PROHIBITED UNLESS AUTHORIZED IN WRITING BY CONXALL CORPORATION.

APPROVED BY: _____

DATE: _____

B	MA	07-29-25	UPDATED MANUFACTURING DRAWING PER ECR 9829	
A	MA	04-17-24	RELEASED PER PDR 22008-2	
	PNK	5-24-23	CUSTOMER DRAWING	
REV.	INIT.	DATE	DESCRIPTION	
ALL INFORMATION ILLUSTRATED IS THE PROPERTY OF "CONXALL CORPORATION". UNAUTHORIZED DUPLICATION OR DISTRIBUTION OF THIS DOCUMENT IS PROHIBITED.			ORIG. DRAWN BY: PNK	DATE: 5-24-23
ALL UNITS ARE IN FEET, INCHES, FRACTION OF INCHES AND DECIMALS.			CHECKED BY:	 601 E. WILDWOOD VILLA PARK, IL 60181
= CRITICAL CHARACTERISTIC FLAG PER SPEC. XXXX			APPROVED BY:	
			SCALE NTS	
			SIZE B	
FILE: W3180-XPG-P-4XX			SHEET 1 OF 1	TITLE: CABLE CONNECTOR ASS'Y (2-3) #12 PIN CONTACTS, CRIMP INSTA-CLICK™ MULTI-CON-X STANDARD PRODUCT
DIRECTORY: SLW			PART NUMBER: W3180-XPG-P-4XX	
REV B				