

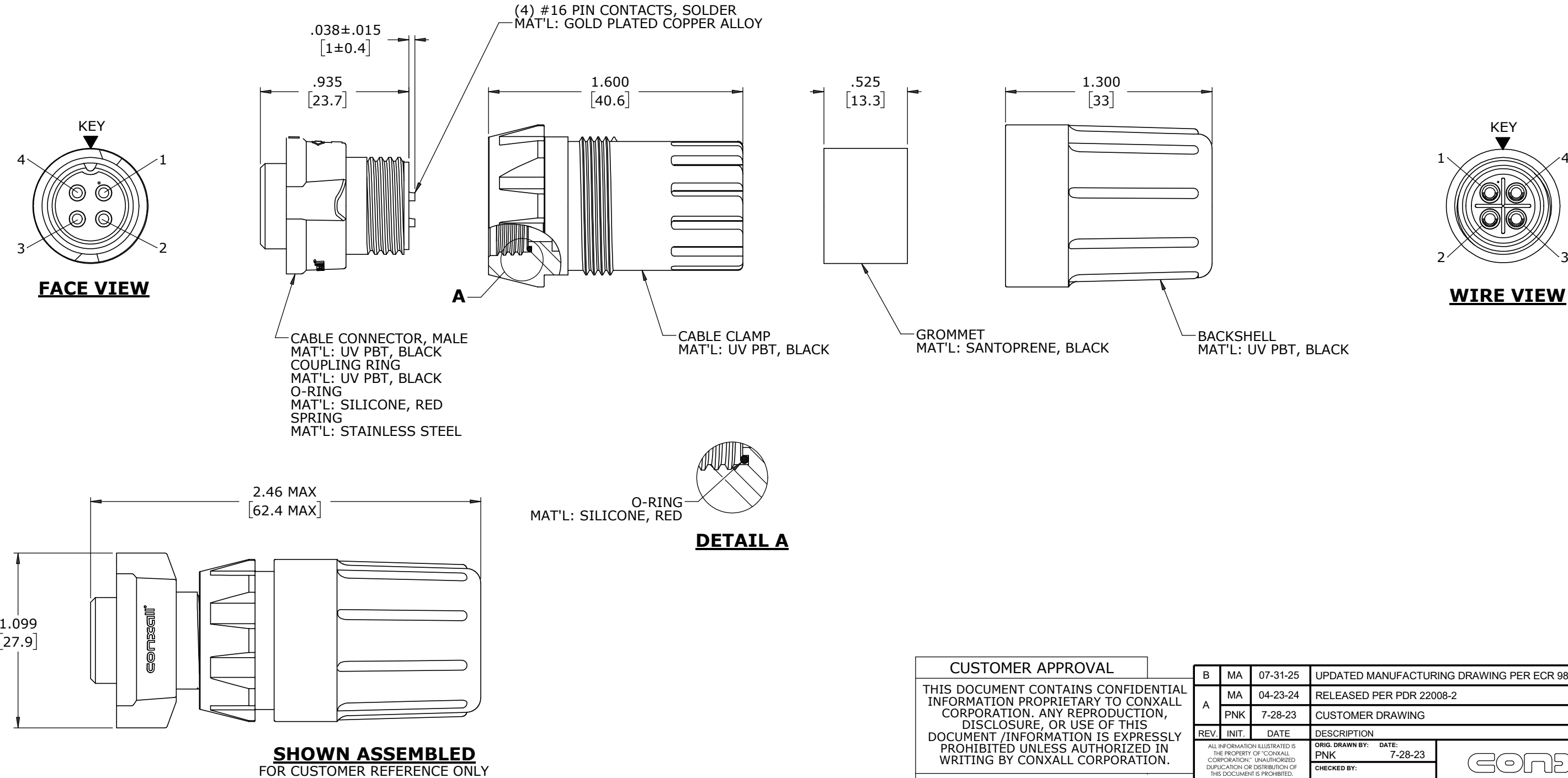
CUSTOMER PRINT

PART NUMBER: W3382-4PG-P-4XX

NOTES:

- 1. ALL PARTS ARE BULK PACKED
- 2. RED SILICONE O-RING IS LUBRICATED AND INSTALLED INTO GROOVE OF CABLE CLAMP
- 3. CONTACTS ASSEMBLED INTO CONNECTOR
- 4. ALL DIMENSIONS ARE REFERENCE EXCEPT THOSE WITH A TOLERANCE

CONNECTOR P/N	GROMMET I.D. / CABLE O.D. RANGE	CONTACTS
W3382-4PG-P-440	0.400 [10.2] / 0.320 - 0.400 [8.1 - 10.2]	4 #16
W3382-4PG-P-450	0.500 [12.7] / 0.400 - 0.500 [10.2 - 12.7]	
W3382-4PG-P-457	0.570 [14.5] / 0.500 - 0.570 [12.7 - 14.5]	



CUSTOMER APPROVAL	
THIS DOCUMENT CONTAINS CONFIDENTIAL INFORMATION PROPRIETARY TO CONXALL CORPORATION. ANY REPRODUCTION, DISCLOSURE, OR USE OF THIS DOCUMENT /INFORMATION IS EXPRESSLY PROHIBITED UNLESS AUTHORIZED IN WRITING BY CONXALL CORPORATION.	
APPROVED BY:	_____
DATE:	_____

B	MA	07-31-25	UPDATED MANUFACTURING DRAWING PER ECR 9829	
A	MA	04-23-24	RELEASED PER PDR 22008-2	
	PNK	7-28-23	CUSTOMER DRAWING	
REV.	INIT.	DATE	DESCRIPTION	
	PNK	7-28-23	ORIG. DRAWN BY: DATE: 7-28-23	 601 E. WILDWOOD VILLA PARK, IL 60181
ALL INFORMATION ILLUSTRATED IS THE PROPERTY OF "CONXALL CORPORATION". UNAUTHORIZED DUPLICATION OR DISTRIBUTION OF THIS DOCUMENT IS PROHIBITED.			CHECKED BY:	
			APPROVED BY:	
ALL UNITS ARE IN FEET, INCHES, FRACTION OF INCHES AND DECIMALS.			SCALE NTS	SIZE B
			SHEET 1 OF 1	
FILE: W3382-4PG-P-4XX			DIRECTORY: SLW	PART NUMBER: W3382-4PG-P-4XX
				REV B

DIMENSIONS IN BRACKETS [] ARE IN MILLIMETERS UNLESS INDICATED

RoHS COMPLIANT

➤ = CRITICAL CHARACTERISTIC FLAG PER SPEC. XXXX