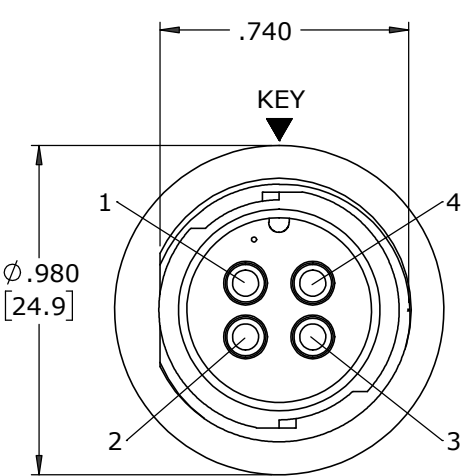
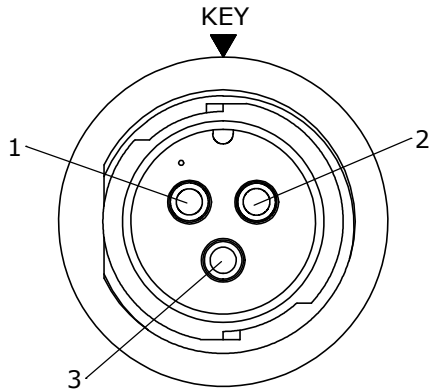


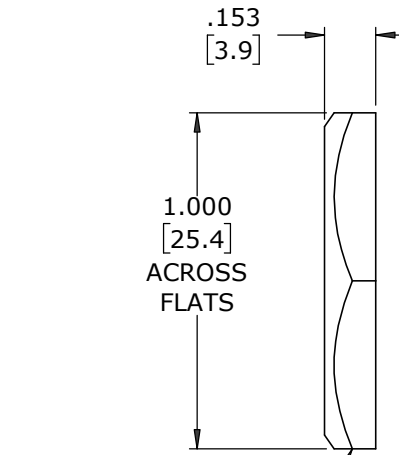
- NOTES:
- 1. ALL PARTS ARE BULK PACKED
 - 2. CONTACTS WITH SET SCREW ASSEMBLED INTO CONNECTOR
CONTACTS ACCEPT 12, 14, AND 16 AWG WIRES
 - 3. ALL DIMENSIONS ARE REFERENCE EXCEPT THOSE WITH A TOLERANCE



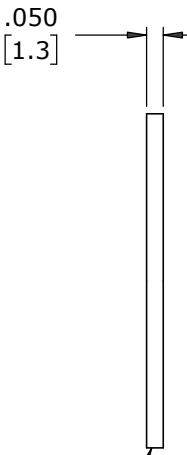
FACE VIEW
W4Z85-4PG-P-300



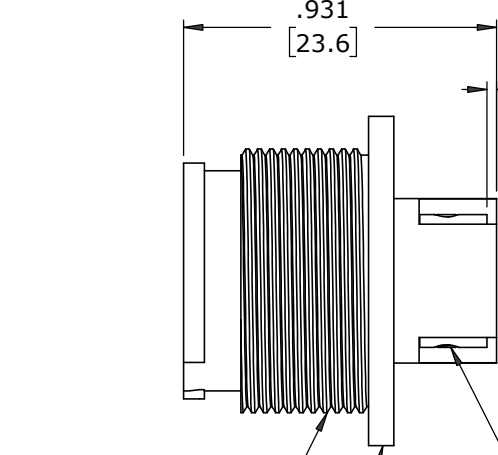
FACE VIEW
W4Z85-3PG-P-300



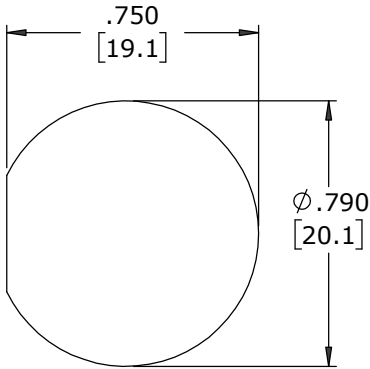
HEX NUT
MAT'L: UV PBT, BLACK



GASKET
MAT'L: NEOPRENE, BLACK



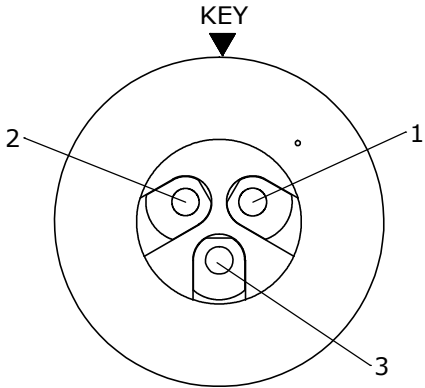
13-16-27 UNS-2A
MODIFIED THREAD
PANEL CONNECTOR, MALE
MAT'L: UV PBT, BLACK



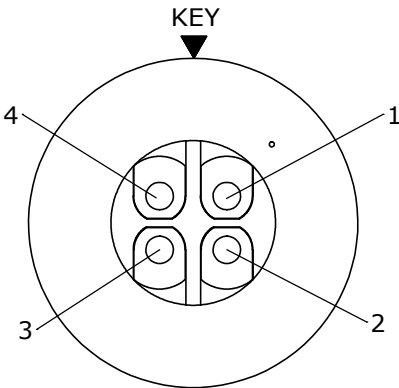
**RECOMMENDED
PANEL CUTOUT**
TOLERANCE ±.003 [.08]

ASS'Y P/N	CONTACT QTY
W4Z85-3PG-P-300	(3) #14
W4Z85-4PG-P-300	(4) #14

NUMBER OF CONTACTS



WIRE VIEW
W4Z85-3PG-P-300



WIRE VIEW
W4Z85-4PG-P-300

CUSTOMER APPROVAL

THIS DOCUMENT CONTAINS CONFIDENTIAL INFORMATION PROPRIETARY TO CONXALL CORPORATION. ANY REPRODUCTION, DISCLOSURE, OR USE OF THIS DOCUMENT /INFORMATION IS EXPRESSLY PROHIBITED UNLESS AUTHORIZED IN WRITING BY CONXALL CORPORATION.

APPROVED BY: _____
DATE: _____

A	MA	10-13-22	RELEASED PER PDR 18008	
	AM	02-24-22	FIRST DRAWN	
REV.	INIT.	DATE	DESCRIPTION	
ALL INFORMATION ILLUSTRATED IS THE PROPERTY OF "CONXALL CORPORATION". UNAUTHORIZED DUPLICATION OR DISTRIBUTION OF THIS DOCUMENT IS PROHIBITED.			ORIG. DRAWN BY: AM	DATE: 03-10-22
ALL UNITS ARE IN FEET, INCHES, FRACTION OF INCHES AND DECIMALS.			CHECKED BY:	 601 E. WILDWOOD VILLA PARK, IL 60181
			APPROVED BY:	
			SCALE: NTS	
			SIZE: B	
			SHEET: 1 OF 1	
			FILE: W4Z85-XPG-P-300	
			DIRECTORY: SLW	
			TITLE: PANEL ASSEMBLY (3-4) #14 PIN CONTACTS, SCREW TERM INSTA-CLICK™ MULTI-CON-X STANDARD PRODUCT	
			CUSTOMER: W4Z85-XPG-P-300	
			PART NUMBER: W4Z85-XPG-P-300	
			REV: A	

DIMENSIONS IN BRACKETS [] ARE IN MILLIMETERS UNLESS INDICATED

RoHS COMPLIANT

➤ = CRITICAL CHARACTERISTIC FLAG PER SPEC. XXXX