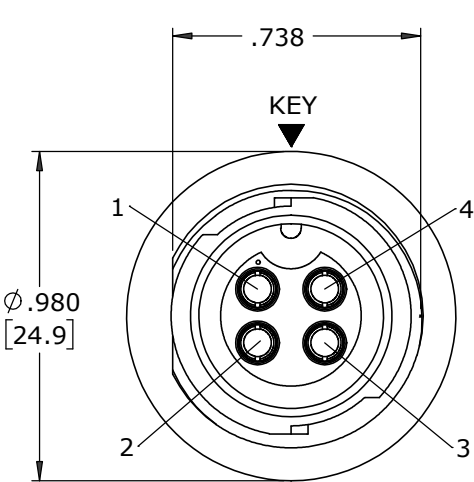


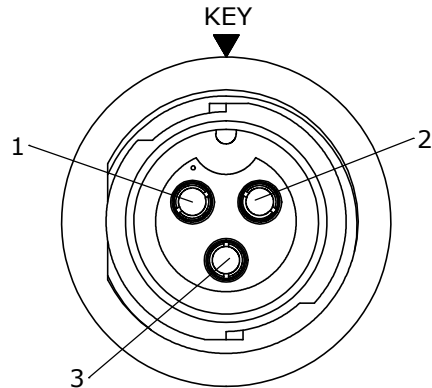
- NOTES:
- 1. ALL PARTS ARE BULK PACKED
 - 2. CONTACTS WITH SET SCREW ASSEMBLED INTO CONNECTOR
CONTACTS ACCEPT 12, 14, AND 16 AWG WIRES
 - 3. ALL DIMENSIONS ARE REFERENCE EXCEPT THOSE WITH A TOLERANCE

ASS'Y P/N	CONTACT QTY
W4Z85-3SG-P-300	(3) #14
W4Z85-4SG-P-300	(4) #14

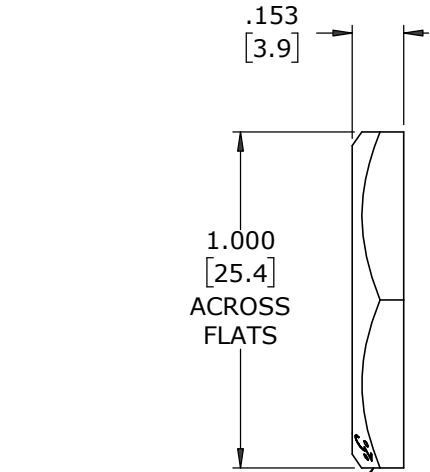
NUMBER OF CONTACTS



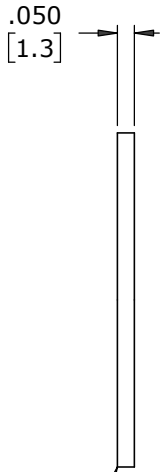
FACE VIEW
W4Z85-4SG-P-300



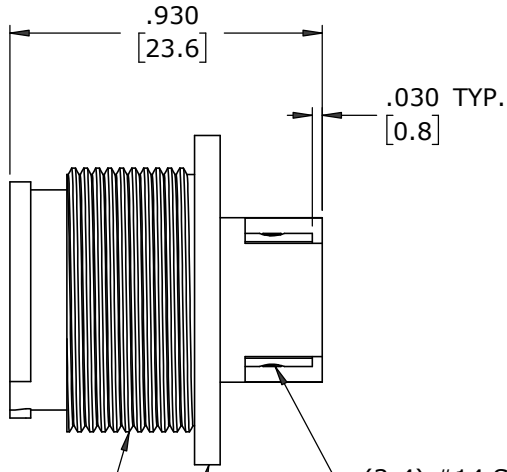
FACE VIEW
W4Z85-3SG-P-300



HEX NUT
MAT'L: UV PBT, BLACK

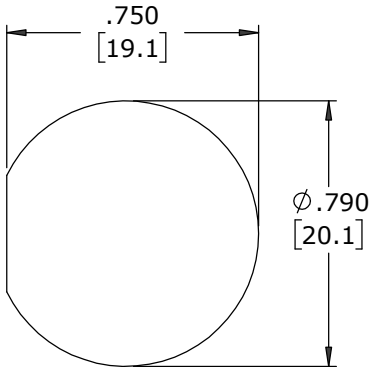


GASKET
MAT'L: NEOPRENE, BLACK

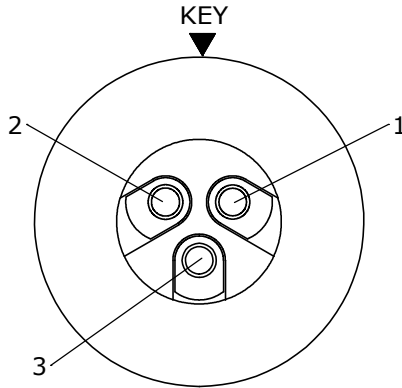


PANEL CONNECTOR, FEMALE
MAT'L: UV PBT, BLACK

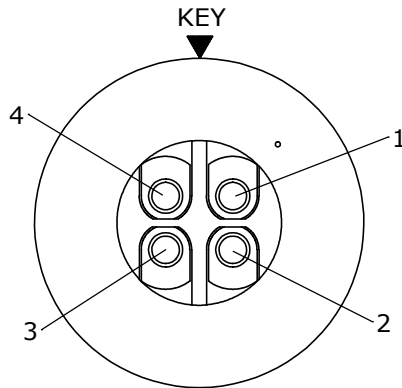
(3-4) #14 SOCKET CONTACTS, SCREW TERMINAL
MAT'L: GOLD PLATED COPPER ALLOY
(3-4) #1-72 HEX SOCKET SET SCREWS
MAT'L: STAINLESS STEEL
REQUIRES ALLEN WRENCH SIZE .035 INCH OR .9mm



**RECOMMENDED
PANEL CUTOUT**
TOLERANCE ±.003 [.08]



WIRE VIEW
W4Z85-3SG-P-300




WIRE VIEW
W4Z85-4SG-P-300

CUSTOMER APPROVAL

THIS DOCUMENT CONTAINS CONFIDENTIAL INFORMATION PROPRIETARY TO CONXALL CORPORATION. ANY REPRODUCTION, DISCLOSURE, OR USE OF THIS DOCUMENT /INFORMATION IS EXPRESSLY PROHIBITED UNLESS AUTHORIZED IN WRITING BY CONXALL CORPORATION.

APPROVED BY: _____
DATE: _____

A	MA	10-18-22	RELEASED PER PDR 18008					
	AM	02-24-22	PREVIOUS PART NUMBER WAS X18008-050					
REV.	INIT.	DATE	DESCRIPTION					
ALL INFORMATION ILLUSTRATED IS THE PROPERTY OF "CONXALL CORPORATION". UNAUTHORIZED DUPLICATION OR UNAUTHORIZATION OF THIS DOCUMENT IS PROHIBITED.			ORIG. DRAWN BY: DATE:		 601 E. WILDWOOD VILLA PARK, IL 60181			
			AM 03-10-22					
ALL UNITS ARE IN FEET, INCHES, FRACTION OF INCHES AND DECIMALS.			CHECKED BY:				APPROVED BY:	
▷ = CRITICAL CHARACTERISTIC FLAG PER SPEC. XXXX			SCALE SIZE SHEET		TITLE: PANEL ASSEMBLY (3-4) #14 SOCKET CONTACTS, SCREW TERM INSTA-CLICK™ MULTI-CON-X STANDARD PRODUCT			
			NTS B 1 OF 1					
			FILE:	DIRECTORY:	PART NUMBER:	REV		
			W4Z85-XSG-P-300	SLW	W4Z85-XSG-P-300	A		

DIMENSIONS IN BRACKETS [] ARE IN MILLIMETERS UNLESS INDICATED

RoHS COMPLIANT