

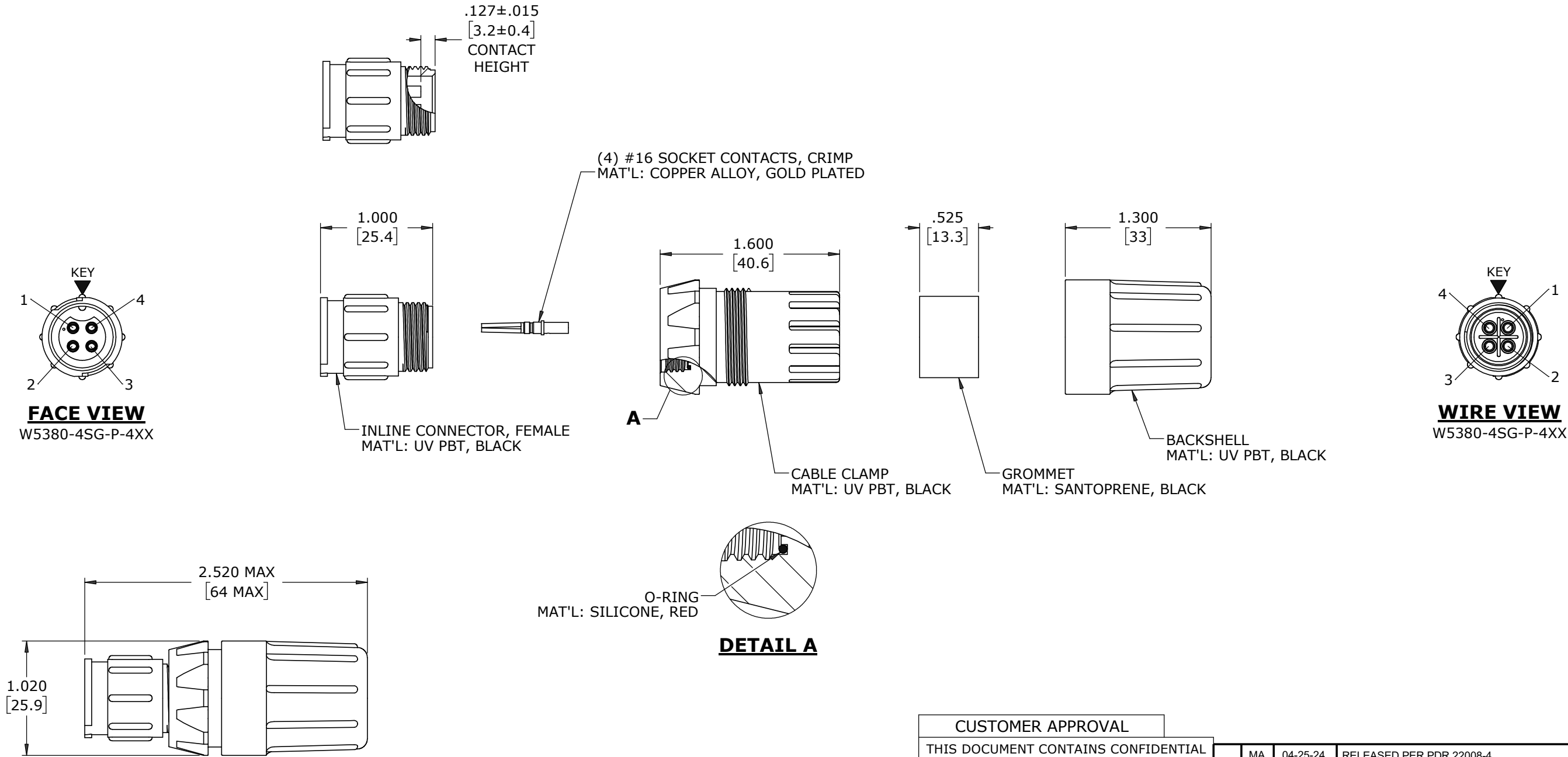
CUSTOMER PRINT

PART NUMBER: W5380-4SG-P-4XX

NOTES:

1. ALL PARTS TO BE BULK PACKED.
2. RED SILICONE O-RING IS LUBRICATED AND INSTALLED INTO GROOVE OF CABLE CLAMP
3. CONTACTS SUPPLIED UNASSEMBLED
4. DIMENSIONS ARE REFERENCE ONLY EXCEPT THOSE WITH A TOLERANCE


ASSEMBLY P/N	GROMMET I.D. / CABLE O.D. RANGE	CONTACTS
W5380-4SG-P-440	0.400 [10.2] / 0.320 - 0.400 [8.1 - 10.2]	4 #16
W5380-4SG-P-450	0.500 [12.7] / 0.400 - 0.500 [10.2 - 12.7]	
W5380-4SG-P-457	0.570 [14.5] / 0.500 - 0.570 [12.7 - 14.5]	



CUSTOMER APPROVAL

THIS DOCUMENT CONTAINS CONFIDENTIAL INFORMATION PROPRIETARY TO CONXALL CORPORATION. ANY REPRODUCTION, DISCLOSURE, OR USE OF THIS DOCUMENT /INFORMATION IS EXPRESSLY PROHIBITED UNLESS AUTHORIZED IN WRITING BY CONXALL CORPORATION.

APPROVED BY: _____
DATE: _____

A	MA	04-25-24	RELEASED PER PDR 22008-4	
	PNK	05-19-23	PRR# P-22008-4	
REV.	INIT.	DATE	DESCRIPTION	
ALL INFORMATION ILLUSTRATED IS THE PROPERTY OF "CONXALL CORPORATION". UNAUTHORIZED DUPLICATION OR DISTRIBUTION OF THIS DOCUMENT IS PROHIBITED.			ORIG. DRAWN BY: PNK	DATE: 05-19-23
ALL UNITS ARE IN FEET, INCHES, FRACTION OF INCHES AND DECIMALS.			CHECKED BY:	 601 E. WILDWOOD VILLA PARK, IL 60181
			APPROVED BY:	
			SCALE: NTS	
			SIZE: B	
			SHEET: 1 OF 1	
			FILE: W5380-4SG-P-4XX	
			DIRECTORY: SLW	
			PART NUMBER: W5380-4SG-P-4XX	
			REV: A	

DIMENSIONS IN BRACKETS [] ARE METRIC

RoHS COMPLIANT

➤ = CRITICAL CHARACTERISTIC FLAG PER SPEC. XXXX