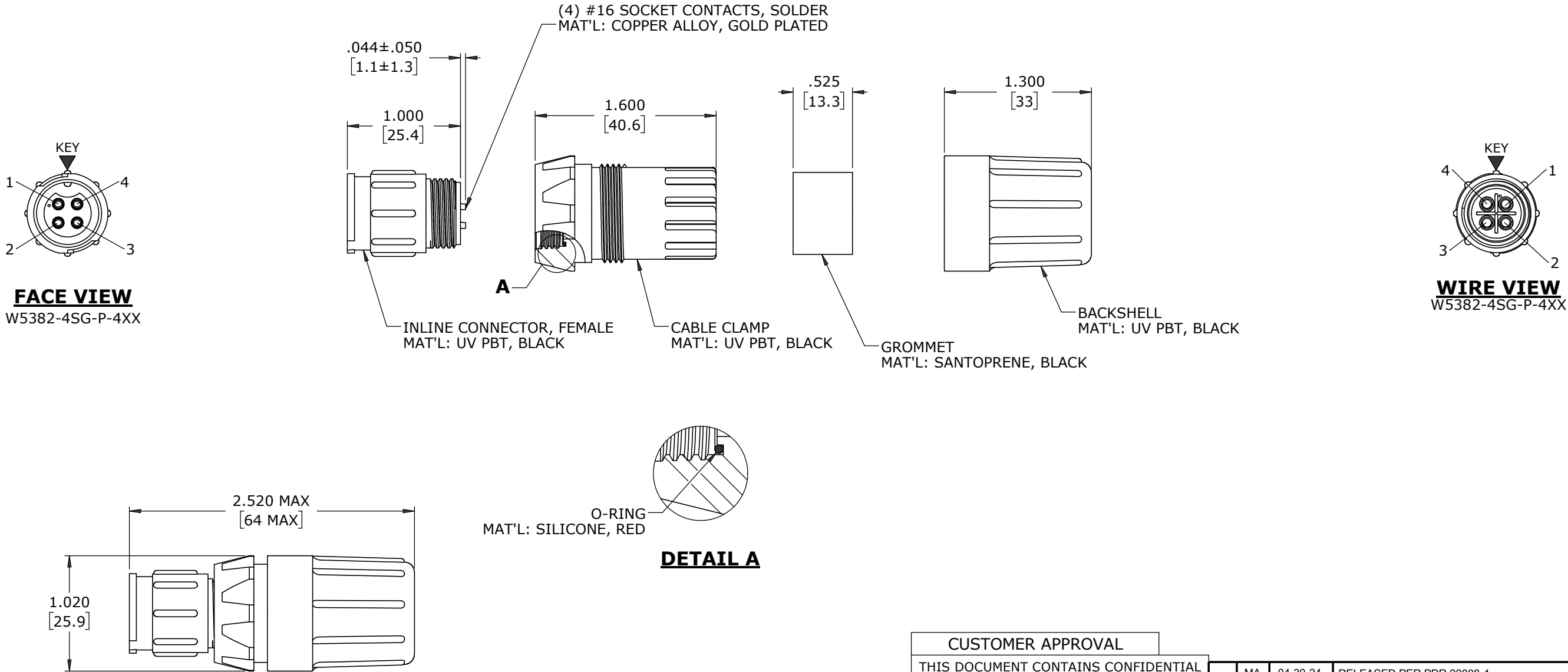


- NOTES:
- 1. ALL PARTS TO BE BULK PACKED
 - 2. RED SILICONE O-RING IS LUBRICATED AND INSTALLED INTO GROOVE OF CABLE CLAMP
 - 3. CONTACTS ARE ASSEMBLED INTO CONNECTOR
 - 4. DIMENSIONS ARE REFERENCE ONLY EXCEPT THOSE WITH A TOLERANCE

ASSEMBLY P/N	GROMMET I.D. / CABLE O.D. RANGE	CONTACTS
W5382-4SG-P-440	0.400 [10.2] / 0.320 - 0.400 [8.1 - 10.2]	4 #16
W5382-4SG-P-450	0.500 [12.7] / 0.400 - 0.500 [10.2 - 12.7]	
W5382-4SG-P-457	0.570 [14.5] / 0.500 - 0.570 [12.7 - 14.5]	



SHOWN ASSEMBLED
FOR CUSTOMER REFERENCE ONLY

CUSTOMER APPROVAL	
THIS DOCUMENT CONTAINS CONFIDENTIAL INFORMATION PROPRIETARY TO CONXALL CORPORATION. ANY REPRODUCTION, DISCLOSURE, OR USE OF THIS DOCUMENT /INFORMATION IS EXPRESSLY PROHIBITED UNLESS AUTHORIZED IN WRITING BY CONXALL CORPORATION.	
APPROVED BY: _____	DATE: _____

DIMENSIONS IN BRACKETS [] ARE METRIC

RoHS COMPLIANT

A	MA	04-30-24	RELEASED PER PDR 22008-4	
	PNK	05-19-23	PRR# P-22008-4	
REV.	INIT.	DATE	DESCRIPTION	
ALL INFORMATION ILLUSTRATED IS THE PROPERTY OF "CONXALL CORPORATION". UNAUTHORIZED DUPLICATION OR DISTRIBUTION OF THIS DOCUMENT IS PROHIBITED.			ORIG. DRAWN BY: PNK	DATE: 05-19-23
ALL UNITS ARE IN FEET, INCHES, FRACTION OF INCHES AND DECIMALS.			CHECKED BY:	 601 E. WILDWOOD VILLA PARK, IL 60181
			APPROVED BY:	
			SCALE: NTS	
			SIZE: B	TITLE: INLINE CONNECTOR ASS'Y (4) #16 SOCKET CONTACTS, SOLDER INSTA-CLICK™ MULTI-CON-X STANDARD PRODUCT
			SHEET: 1 OF 1	
			FILE: W5382-4SG-P-4XX	CUSTOMER: W5382-4SG-P-4XX
			DIRECTORY: SLW	
			PART NUMBER: W5382-4SG-P-4XX	REV A