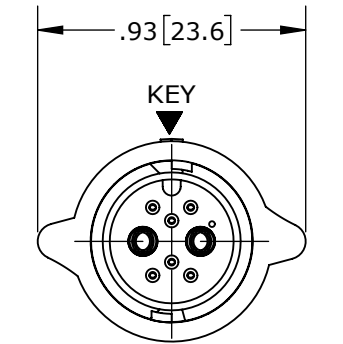
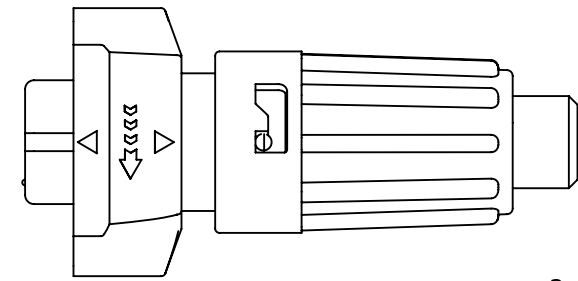


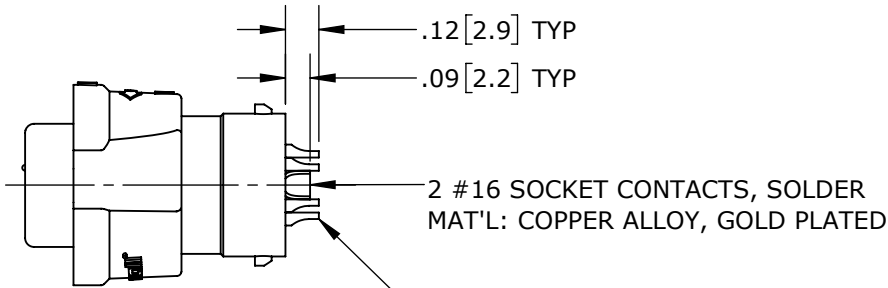
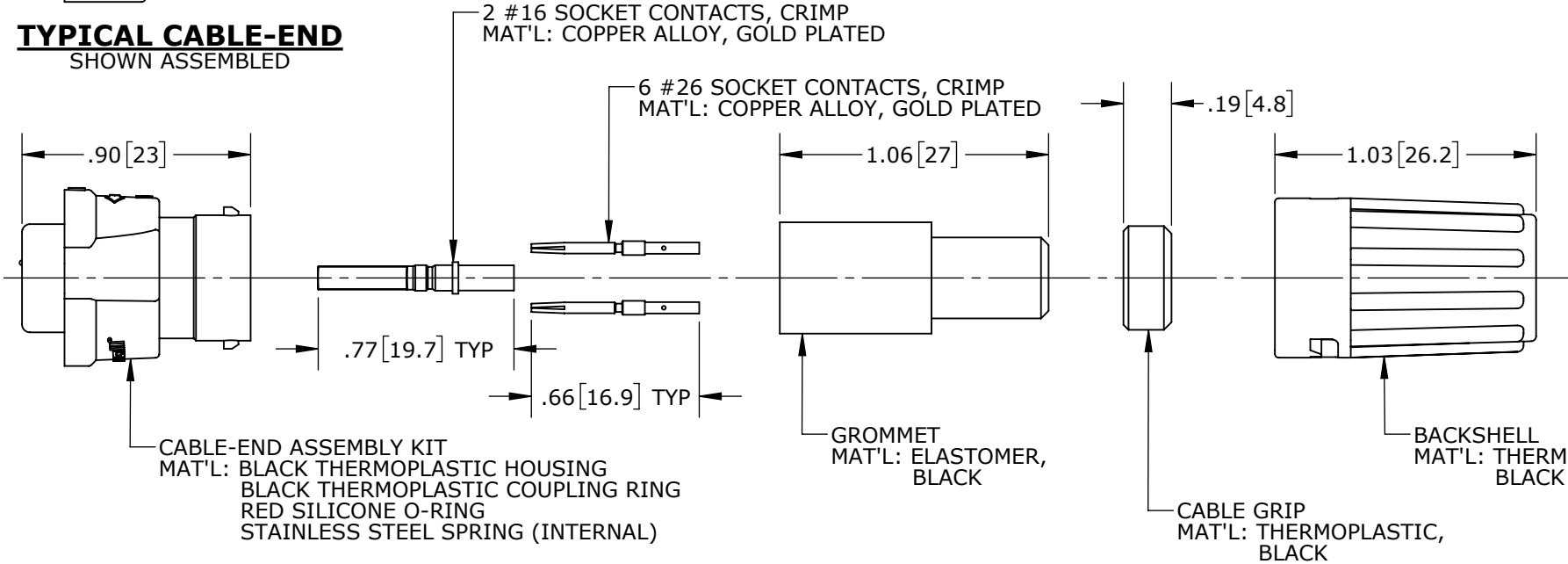
- NOTES:
- 1. CRIMP CONTACTS SUPPLIED UNASSEMBLED.
 - 2. REFER TO DRAWING HPMIMIX FOR CONTACT PATTERNS.
 - 3. DIMENSIONS ARE REFERENCE ONLY, IN INCHES [mm], WITHIN ±0.015 UNLESS OTHERWISE NOTED.



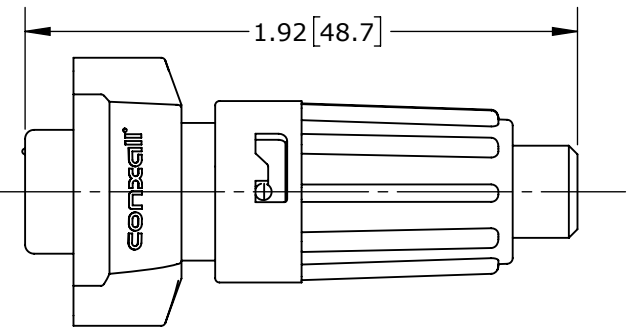
MATING FACE
W6A80-8SG-P-528 SHOWN



TYPICAL CABLE-END
SHOWN ASSEMBLED



W6A82-8SG-P-5XX SHOWN
WITHOUT HARDWARE



TYPICAL CABLE-END
SHOWN ASSEMBLED

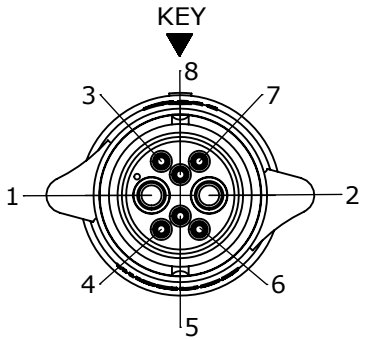
CABLE-END CONNECTOR PART NUMBERS:

W 6 A 8 X - 8 S G - P - 5XX

MIXED CONTACTS:
A = 2 #16 + 6 #26

CONTACTS STYLE:
0 = CRIMP
2 = SOLDER

GROMMET SIZE = CABLE O.D. RANGE:
513 = 0.13 - 0.15 [3.3 - 3.8]
516 = 0.16 - 0.18 [4.1 - 4.6]
519 = 0.19 - 0.21 [4.8 - 5.3]
522 = 0.22 - 0.25 [5.6 - 6.3]
528 = 0.26 - 0.285 [6.6 - 7.2]



WIRING END
W6A80-8SG-P-528 SHOWN
WITHOUT HARDWARE

CUSTOMER APPROVAL	
THIS DOCUMENT CONTAINS CONFIDENTIAL INFORMATION PROPRIETARY TO CONXALL CORPORATION. ANY REPRODUCTION, DISCLOSURE, OR USE OF THIS DOCUMENT /INFORMATION IS EXPRESSLY PROHIBITED UNLESS AUTHORIZED IN WRITING BY CONXALL CORPORATION.	
APPROVED BY:	_____
DATE:	_____

RoHS COMPLIANT

0A	PNK	01-15-18	PDR 16014
REV.	INIT.	DATE	DESCRIPTION
	PNK	01-15-18	ORIG. DRAWN BY: DATE: 01-15-18
			CHECKED BY:
			APPROVED BY:
			SCALE: NTS SIZE: B SHEET: 1 OF 1
			FILE: W6A8X-8SG-P-5XX_CD DIRECTORY: SLW
			TITLE: CABLE-END CONNECTOR 2 #16 + 6 #26 SOCKET CONTACTS INSTA-CLICK™ MINI-CON-X POWER/SIGNAL
			CUSTOMER: STANDARD PRODUCT
			PART NUMBER: W6A8X-8SG-P-5XX
			REV 0A