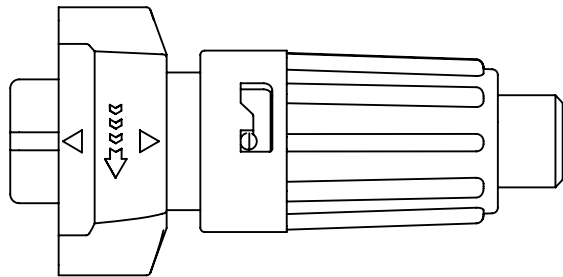
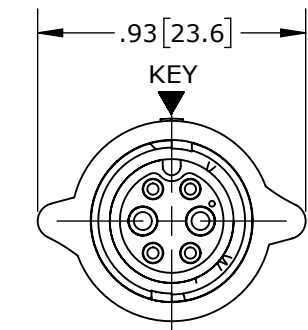
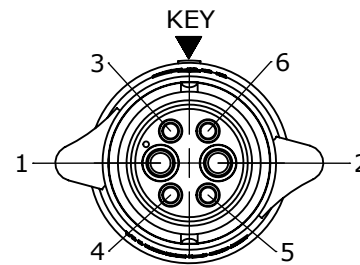
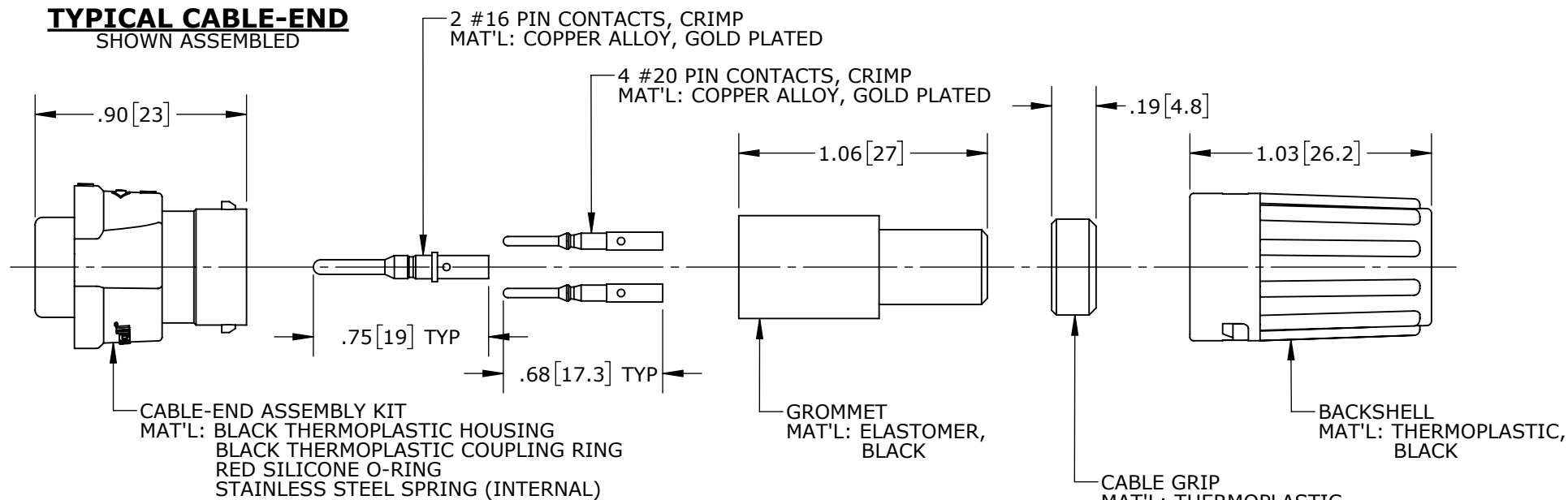
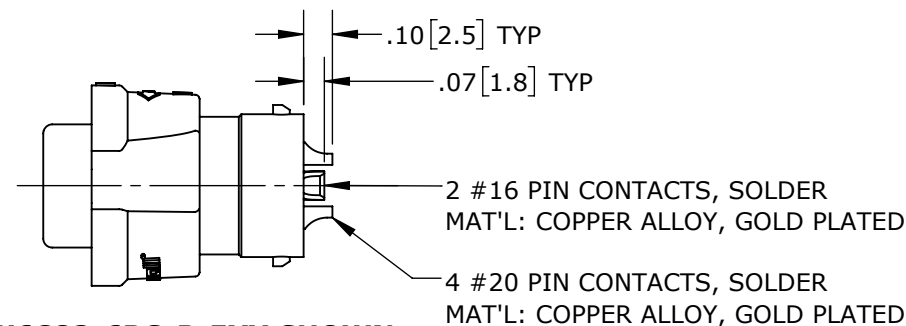
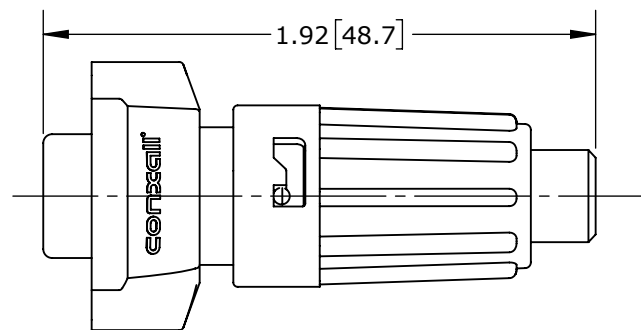


NOTES:

1. CRIMP CONTACTS SUPPLIED UNASSEMBLED.
2. REFER TO DRAWING HPMIMIX FOR CONTACT PATTERNS.
3. DIMENSIONS ARE REFERENCE ONLY, IN INCHES [mm], WITHIN ± 0.015 UNLESS OTHERWISE NOTED.

CABLE-END CONNECTOR PART NUMBERS:

W 6 C 8 X - 6 P G - P - 5XXMIXED CONTACTS:
C = 2 #16 + 4 #20CONTACTS STYLE:
0 = CRIMP
2 = SOLDERGROMMET SIZE = CABLE O.D. RANGE:
513 = 0.13 - 0.15 [3.3 - 3.8]
516 = 0.16 - 0.18 [4.1 - 4.6]
519 = 0.19 - 0.21 [4.8 - 5.3]
522 = 0.22 - 0.25 [5.6 - 6.3]
528 = 0.26 - 0.285 [6.6 - 7.2]**TYPICAL CABLE-END**
SHOWN ASSEMBLED**MATING FACE**
W6C80-6PG-P-528 SHOWN**WIRING END**
W6C80-6PG-P-528 SHOWN
WITHOUT HARDWARE**W6C82-6PG-P-5XX SHOWN**
WITHOUT HARDWARE**TYPICAL CABLE-END**
SHOWN ASSEMBLED

CUSTOMER APPROVAL

THIS DOCUMENT CONTAINS CONFIDENTIAL INFORMATION PROPRIETARY TO CONXALL CORPORATION. ANY REPRODUCTION, DISCLOSURE, OR USE OF THIS DOCUMENT /INFORMATION IS EXPRESSLY PROHIBITED UNLESS AUTHORIZED IN WRITING BY CONXALL CORPORATION.

APPROVED BY: _____

DATE: _____

RoHS COMPLIANT

0A	PNK	01-15-18	PDR 16014
REV.	INIT.	DATE	DESCRIPTION
	PNK	01-15-18	
ALL INFORMATION ILLUSTRATED IS THE PROPERTY OF "CONXALL CORPORATION." UNAUTHORIZED DUPLICATION OR DISTRIBUTION OF THIS DOCUMENT IS PROHIBITED.			ORIG. DRAWN BY: DATE: 01-15-18
ALL UNITS ARE IN FEET, INCHES, FRACTION OF INCHES AND DECIMALS.			CHECKED BY:
UNLESS OTHERWISE SPECIFIED TOLERANCES: 3 PLACE DECIMALS ± 0.010 ANGLES $\pm 1^\circ$ FRACTIONS $\pm 1/16$			APPROVED BY:
- CRITICAL CHARACTERISTIC FLAG PER SPEC. XXXX			SCALE NTS SIZE B SHEET 1 OF 1
FILE: W6C8X-6PG-P-5XX_CD			DIRECTORY: SLW
TITLE: CABLE-END CONNECTOR 2 #16 + 4 #20 PIN CONTACTS INSTA-CLICK™ MINI-CON-X POWER/SIGNAL			CUSTOMER: STANDARD PRODUCT
PART NUMBER: W6C8X-6PG-P-5XX			REV 0A