

- NOTES:
- 1. CRIMP CONTACTS SUPPLIED UNASSEMBLED.
  - 2. REFER TO DRAWING HPMIMIX FOR CONTACT PATTERNS.
  - 3. DIMENSIONS ARE REFERENCE ONLY, IN INCHES [mm], WITHIN ±0.015 UNLESS OTHERWISE NOTED.

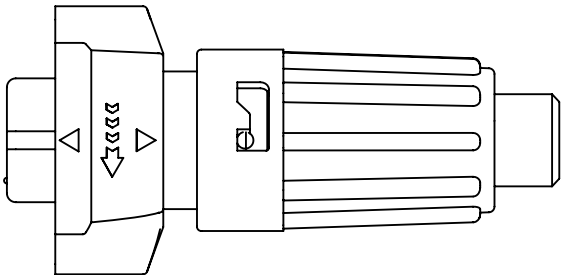
CABLE-END CONNECTOR PART NUMBERS:

W6C8X-6SG-P-5XX

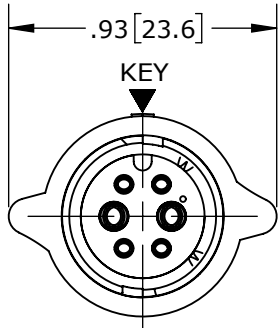
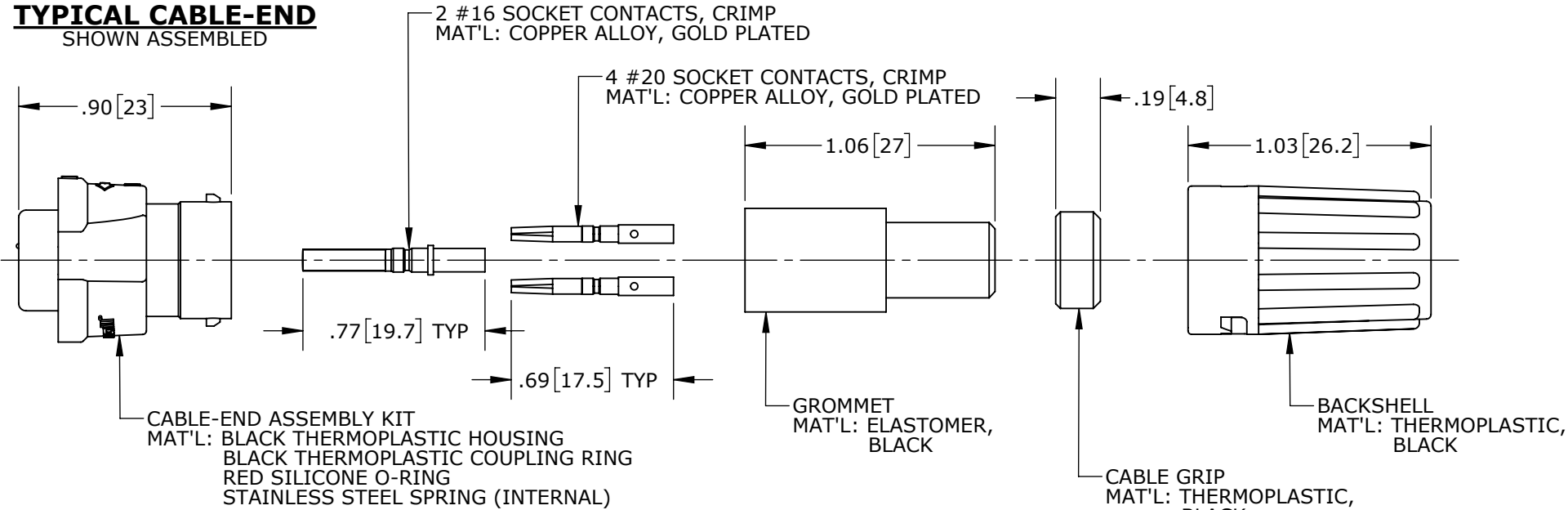
MIXED CONTACTS:  
C = 2 #16 + 4 #20

CONTACTS STYLE:  
0 = CRIMP  
2 = SOLDER

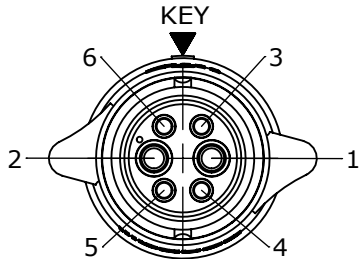
GROMMET SIZE = CABLE O.D. RANGE:  
513 = 0.13 - 0.15 [3.3 - 3.8]  
516 = 0.16 - 0.18 [4.1 - 4.6]  
519 = 0.19 - 0.21 [4.8 - 5.3]  
522 = 0.22 - 0.25 [5.6 - 6.3]  
528 = 0.26 - 0.285 [6.6 - 7.2]



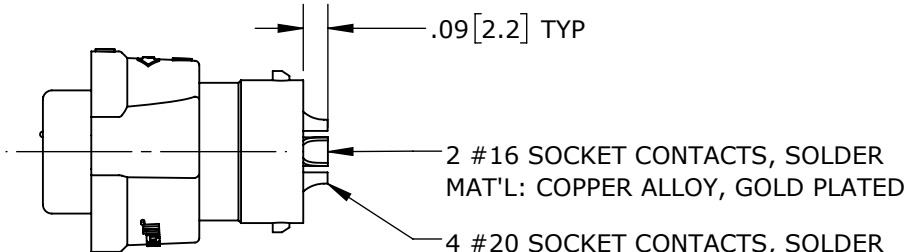
TYPICAL CABLE-END  
SHOWN ASSEMBLED



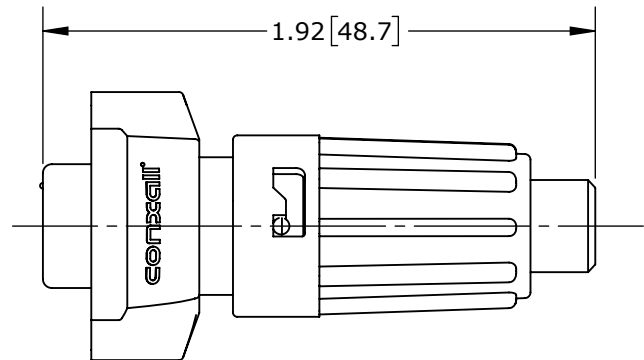
MATING FACE  
W6C80-6SG-P-528 SHOWN



WIRING END  
W6C80-6SG-P-528 SHOWN  
WITHOUT HARDWARE



W6C82-6SG-P-5XX SHOWN  
WITHOUT HARDWARE



TYPICAL CABLE-END  
SHOWN ASSEMBLED


CUSTOMER APPROVAL

THIS DOCUMENT CONTAINS CONFIDENTIAL INFORMATION PROPRIETARY TO CONXALL CORPORATION. ANY REPRODUCTION, DISCLOSURE, OR USE OF THIS DOCUMENT /INFORMATION IS EXPRESSLY PROHIBITED UNLESS AUTHORIZED IN WRITING BY CONXALL CORPORATION.

APPROVED BY: \_\_\_\_\_

DATE: \_\_\_\_\_

RoHS COMPLIANT

0A	PNK	01-15-18	PDR 16014	
REV.	INIT.	DATE	DESCRIPTION	
	PNK	01-15-18	ORIG. DRAWN BY: DATE:	 601 E. WILDWOOD VILLA PARK, IL 60181
ALL INFORMATION ILLUSTRATED IS THE PROPERTY OF "CONXALL CORPORATION." UNAUTHORIZED DUPLICATION OR DISTRIBUTION OF THIS DOCUMENT IS PROHIBITED.			CHECKED BY:	
ALL UNITS ARE IN FEET, INCHES, FRACTION OF INCHES AND DECIMALS.			APPROVED BY:	TITLE: CABLE-END CONNECTOR 2 #16 + 4 #20 SOCKET CONTACTS INSTA-CLICK™ MINI-CON-X POWER/SIGNAL
UNLESS OTHERWISE SPECIFIED TOLERANCES: 3 PLACE DECIMALS ±.010 ANGLES ±1° FRACTIONS ±1/16			SCALE: NTS SIZE: B SHEET: 1 OF 1	
△ = CRITICAL CHARACTERISTIC FLAG PER SPEC. XXXX			FILE: W6C8X-6SG-P-5XX_CD DIRECTORY: SLW	CUSTOMER: STANDARD PRODUCT
			PART NUMBER: W6C8X-6SG-P-5XX	REV 0A