

CUSTOMER PRINT

PART NUMBER: W8880-XPG-P-5XX

- NOTES:
1. ALL PARTS TO BE BULK PACKED.
 2. REFER TO DRAWING HPMISTD FOR CONTACT PATTERNS.
 3. DIMENSIONS ARE REFERENCE ONLY, IN INCHES [mm].

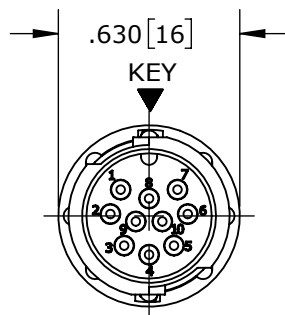
CABLE-TO-CABLE CONNECTOR PART NUMBERS:

W 8 8 8 0 - X P G - P - XXX

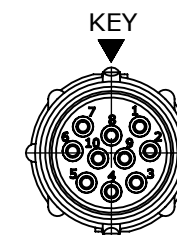
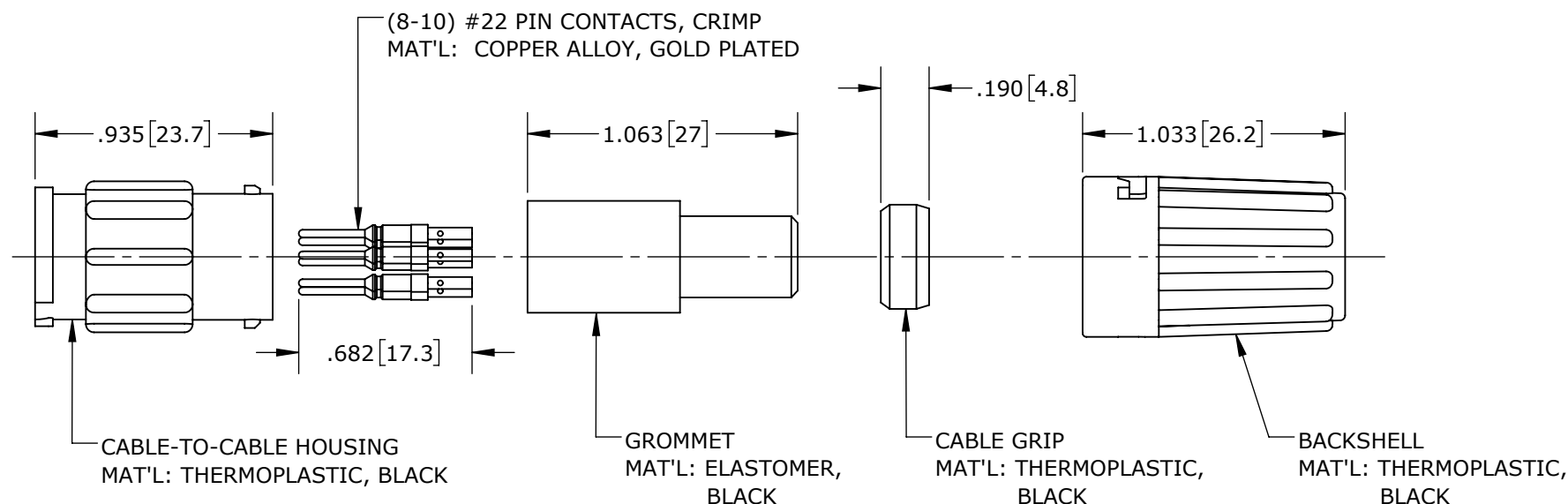
CONTACTS STYLE:
0 = CRIMP

OF CONTACTS:
8-10 #22 PINS

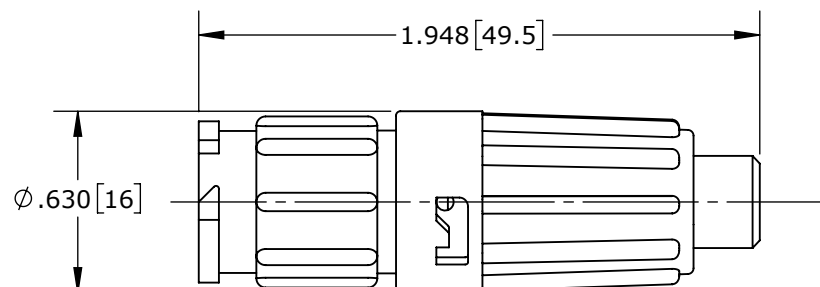
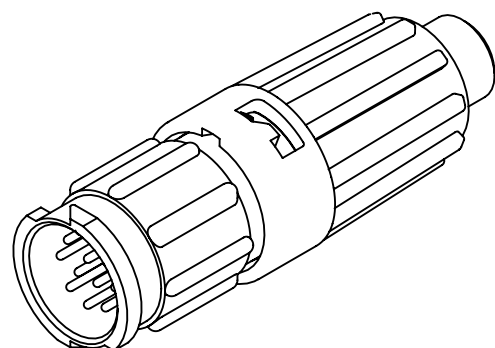
GROMMET SIZE = CABLE O.D. RANGE:
513 = 0.13 - 0.15 [3.3 - 3.8]
516 = 0.16 - 0.18 [4.1 - 4.6]
519 = 0.19 - 0.21 [4.8 - 5.3]
522 = 0.22 - 0.25 [5.6 - 6.3]
526 = 0.25 - 0.27 [6.3 - 6.8]
528 = 0.26 - 0.28 [6.6 - 7.2]



MATING FACE
ASSY: W8880-10PG-P-5XX SHOWN



WIRING END
ASSY: W8880-10PG-P-5XX SHOWN WITHOUT HARDWARE

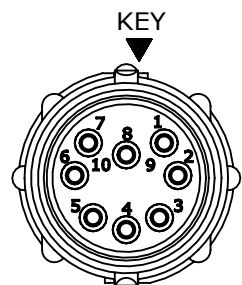


TYPICAL CABLE-TO-CABLE CONNECTOR
SHOWN ASSEMBLED

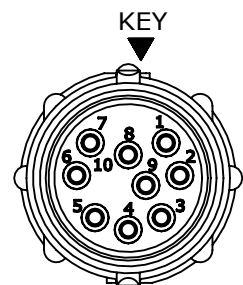
CUSTOMER APPROVAL

THIS DOCUMENT CONTAINS CONFIDENTIAL INFORMATION PROPRIETARY TO CONXALL CORPORATION. ANY REPRODUCTION, DISCLOSURE, OR USE OF THIS DOCUMENT / INFORMATION IS EXPRESSLY PROHIBITED UNLESS AUTHORIZED IN WRITING BY CONXALL CORPORATION.

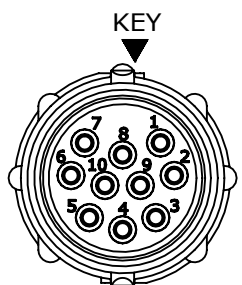
APPROVED BY: _____
DATE: _____



WIRING END
W8880-8PG-P-5XX



WIRING END
W8880-9PG-P-5XX



WIRING END
W8880-10PG-P-5XX

RoHS COMPLIANT

0A	PNK	03-20-18	PDR 16014
REV.	INIT.	DATE	DESCRIPTION
			ORIG. DRAWN BY: PNK DATE: 03-20-18 CHECKED BY: _____ APPROVED BY: _____ SCALE: NTS SIZE: B SHEET: 1 OF 1 FILE: W8880-XPG-P-5XX DIRECTORY: SLW
ALL INFORMATION ILLUSTRATED IS THE PROPERTY OF CONXALL CORPORATION. UNAUTHORIZED DUPLICATION OR DISTRIBUTION OF THIS DOCUMENT IS PROHIBITED.			601 E. WILDWOOD VILLA PARK, IL 60181
ALL UNITS ARE IN FEET, INCHES, FRACTION OF INCHES AND DECIMALS. UNLESS OTHERWISE SPECIFIED TOLERANCES: 3 PLACE DECIMALS ±0.010 ANGLES ±1° FRACTIONS ±1/16 - CRITICAL CHARACTERISTIC FLAG PER SPEC. XXXX			
TITLE: CABLE-TO-CABLE ASSEMBLY 8-10 #22 PIN CONTACTS, CRIMP INSTA-CLICK™ MINI-CON-X CUSTOMER: STANDARD PRODUCT			PART NUMBER: W8880-XPG-P-5XX REV 0A