

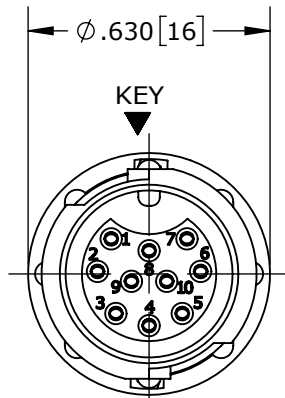
## NOTES:

1. ALL PARTS TO BE BULK PACKED.
2. REFER TO DRAWING HPMISTD FOR CONTACT PATTERNS.
3. DIMENSIONS ARE REFERENCE ONLY, IN INCHES [mm].

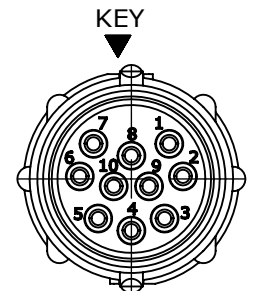
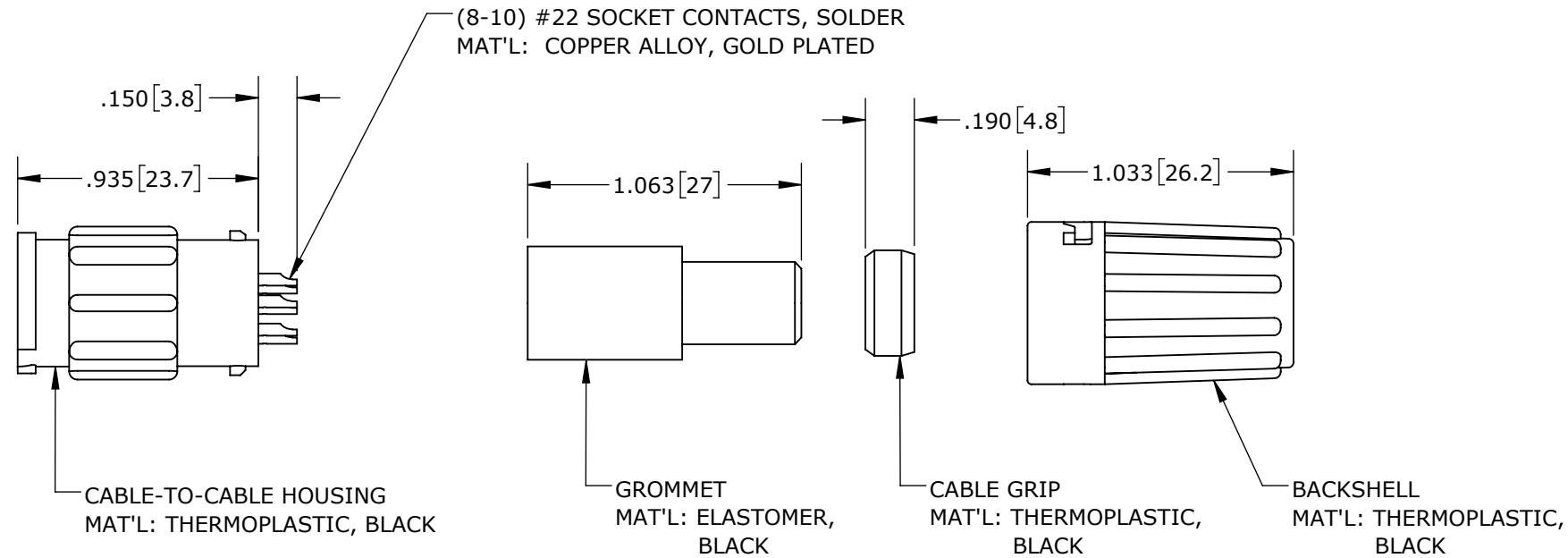
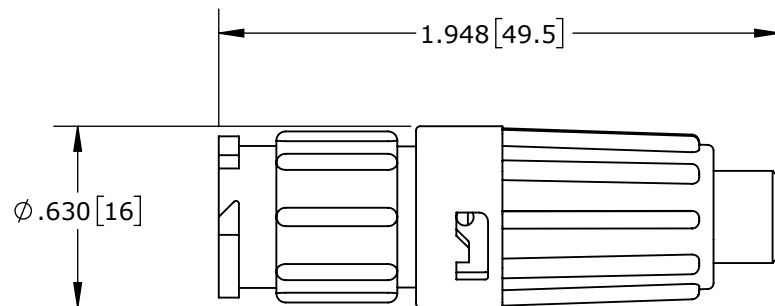
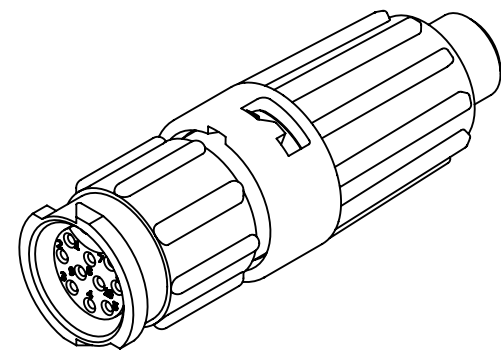
## CABLE-TO-CABLE CONNECTOR PART NUMBERS:

**W 8 8 8 2 - X S G - P - XXX**CONTACTS STYLE:  
2 = SOLDER# OF CONTACTS:  
8-10 #22 SOCKET

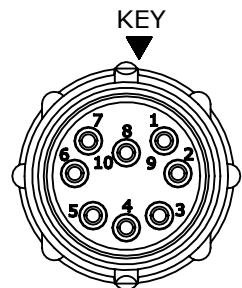
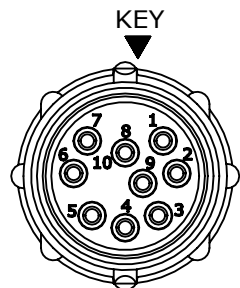
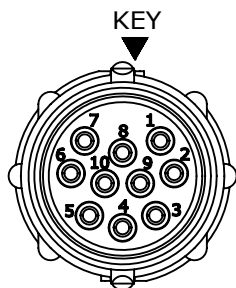
GROMMET SIZE = CABLE O.D. RANGE:

**513** = 0.13 - 0.15 [3.3 - 3.8]**516** = 0.16 - 0.18 [4.1 - 4.6]**519** = 0.19 - 0.21 [4.8 - 5.3]**522** = 0.22 - 0.25 [5.6 - 6.3]**526** = 0.25 - 0.27 [6.3 - 6.8]**528** = 0.26 - 0.28 [6.6 - 7.2]**MATING FACE**

ASSY: W8882-10SG-P-5XX SHOWN

**WIRING END**ASSY: W8882-10SG-P-5XX SHOWN  
WITHOUT HARDWARE**TYPICAL CABLE-TO-CABLE CONNECTOR**

SHOWN ASSEMBLED

**WIRING END**  
W8882-8SG-P-5XX**WIRING END**  
W8882-9SG-P-5XX**WIRING END**  
W8882-10SG-P-5XX

## CUSTOMER APPROVAL

THIS DOCUMENT CONTAINS CONFIDENTIAL INFORMATION PROPRIETARY TO CONXALL CORPORATION. ANY REPRODUCTION, DISCLOSURE, OR USE OF THIS DOCUMENT / INFORMATION IS EXPRESSLY PROHIBITED UNLESS AUTHORIZED IN WRITING BY CONXALL CORPORATION.

APPROVED BY: \_\_\_\_\_

DATE: \_\_\_\_\_

**RoHS COMPLIANT**

0A	PNK	03-20-18	PDR 16014
REV.	INIT.	DATE	DESCRIPTION
	PNK	03-20-18	ORIG. DRAWN BY: DATE: 03-20-18
			CHECKED BY:
			APPROVED BY:
			SCALE NTS SIZE B SHEET 1 OF 1
			FILE: W8882-XSG-P-5XX DIRECTORY: SLW
			TITLE: CABLE-TO-CABLE ASSEMBLY 8-10 #22 SOCKET CONTACTS, SOLDER INSTA-CLICK™ MINI-CON-X
			CUSTOMER: STANDARD PRODUCT
			PART NUMBER: W8882-XSG-P-5XX
			REV 0A