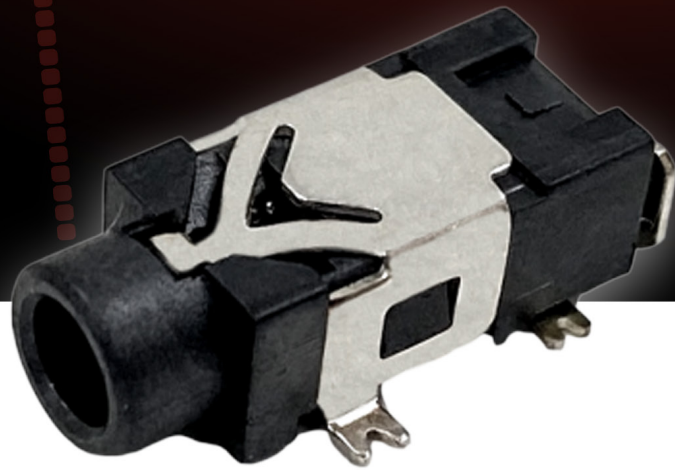
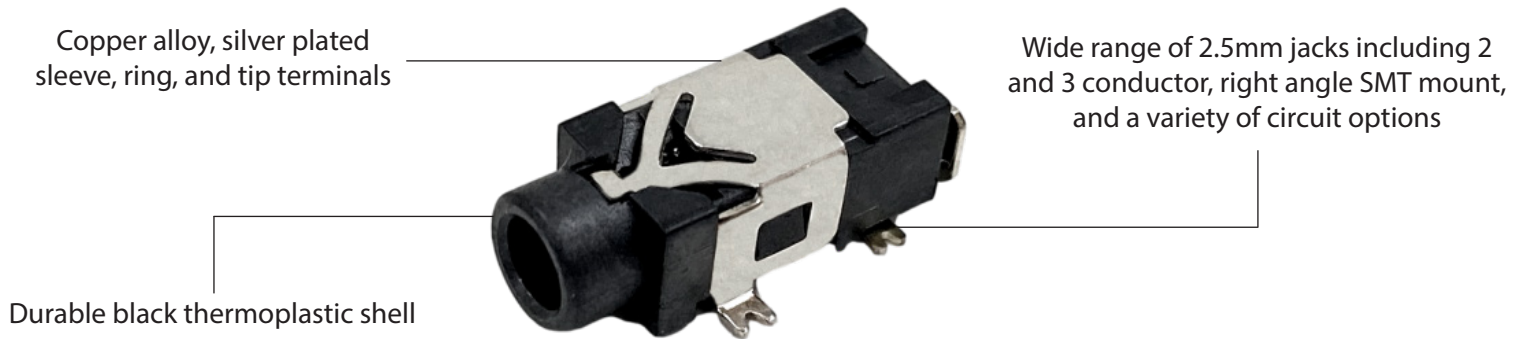


MDSMT SERIES
2.5MM
SURFACE MOUNT JACKS



Switchcraft[®]
CONXALL[®]

HARSH ENVIRONMENT CONNECTIVITY SOLUTIONS



2.5MM SURFACE MOUNT

SWITCHCRAFT'S 2.5MM MDSMT SERIES are low profile jacks that are offered in a wide variety of circuits in 2 or 3 conductor versions. Circuits include closed, dual open, dual closed, and ring open in mono or stereo. The MDSMT Series is used in applications such as computers, video cameras, and multimedia devices.



5,000 CYCLES

2.5mm Jacks are built with 5,000 insertion/withdrawal cycles



VARIETY OF CIRCUITS

A wide variety of circuits are offered with closed and open versions



SWITCHCRAFT QUALITY

For over 75 years, Switchcraft jacks have been trusted for applications all over the world

SPECIFICATIONS

Current Rating: 3A

Contact Resistance: <50 mohms

Insulation Resistance: 100 mohms

Dielectric Voltage: 250VAC @ 1 min

Temp. Rating: -25°C to +85°C

Materials:

Shell: Black Thermoplastic

Shunt Terminal: Copper Alloy

PART NO.	DESCRIPTION
MDSMT2ARATRX	2.5mm" SMT Jack, Mono, closed circuit
MDSMT2BRATRX	2.5mm" SMT Jack, Stereo, dual open circuit
MDSMT3BRATRX	2.5mm" SMT Jack, Stereo, tip closed, ring open circuit
MDSMT4BRATRX	2.5mm" SMT Jack, Stereo, dual closed circuit