

CUSTOMER PRINT

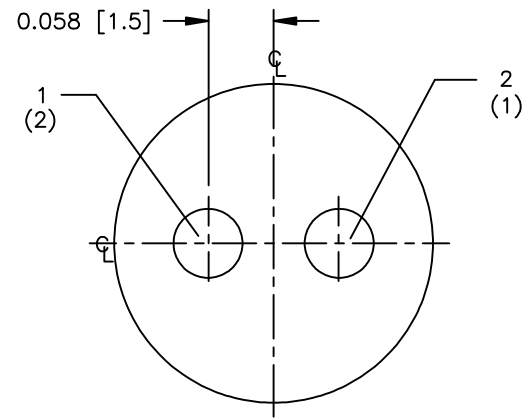
PART NUMBER: HPMCSTD

NOTES:

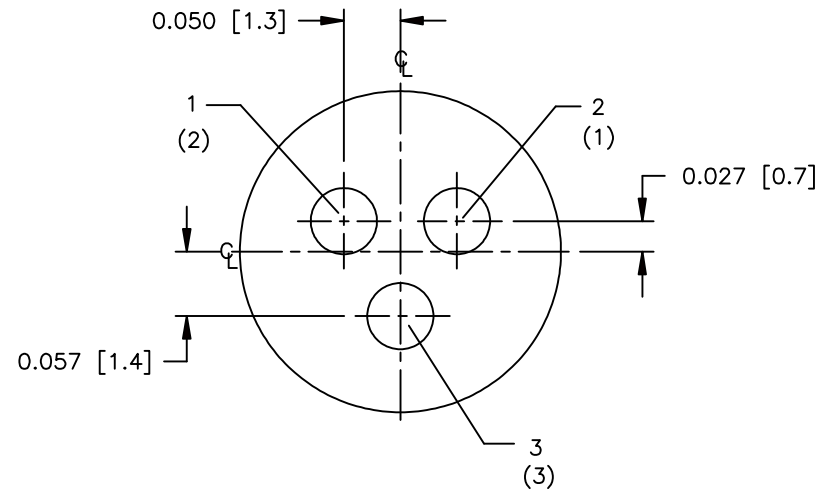
1. POSITION NUMBERS SHOW 1, 2, 3, 4, 5, 6, 7, --- IN WIRE VIEWS ARE FOR CABLE CONNECTORS.
2. POSITION NUMBERS SHOW (1), (2), (3), (4), (5), (6), (7), --- IN WIRE VIEWS ARE FOR PANEL CONNECTORS.

CUSTOMER APPROVAL

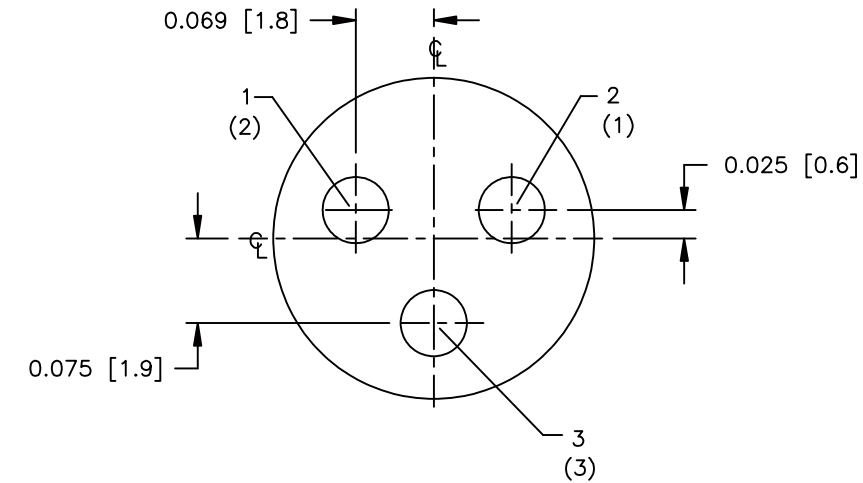
CHECKED BY: _____
 APPROVED BY: _____
 DATE: _____



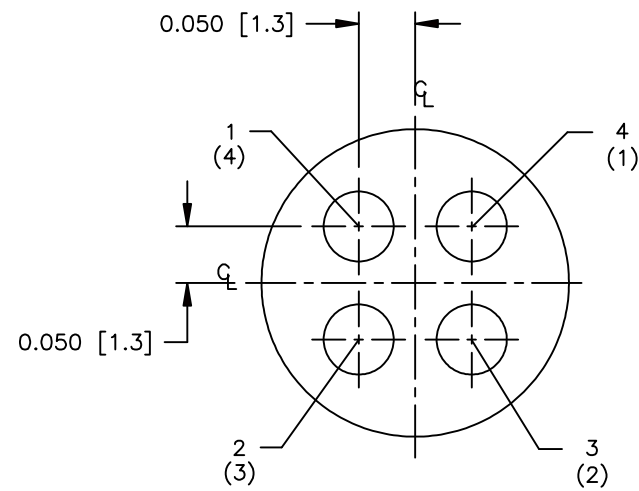
2-#20
 PC TAIL DIA. 0.0395 ±0.001 REF.



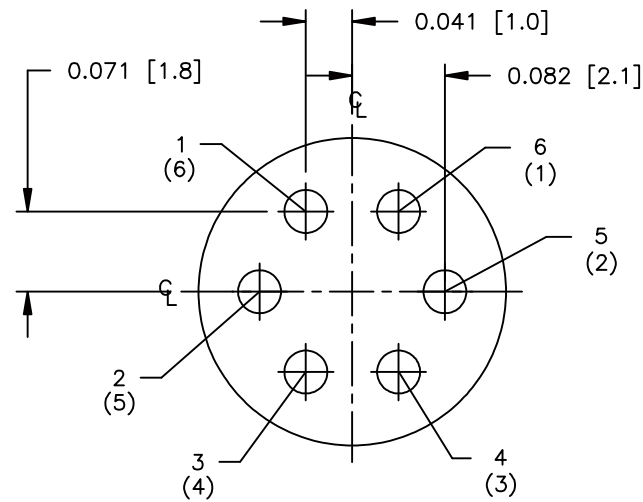
3-#20
 PC TAIL DIA. 0.0395 ±0.001 REF.
 CABLE PIN
 PANEL SOCKET



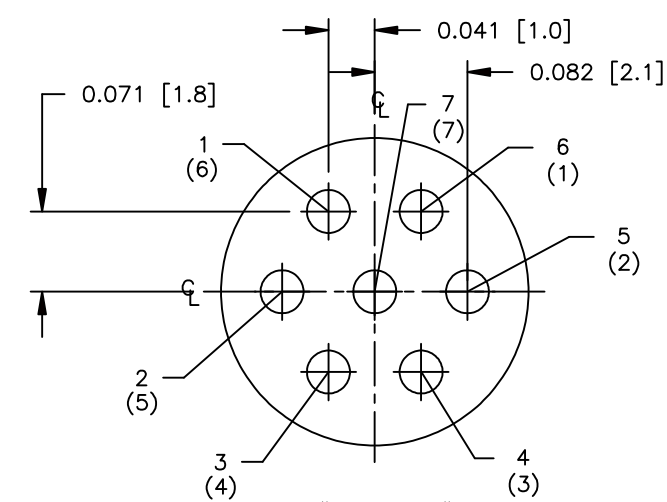
3-#20
 PC TAIL DIA. 0.0395 ±0.001 REF.
 CABLE SOCKET
 PANEL PIN



4-#22
 CONTACT DIA. 0.030 ±0.001 REF.



6-#26
 CONTACT DIA. 0.020 ±0.001 REF.



7-#26 & 5-#26
 POS. 6 & 7 MOLDED CLOSED FOR 5-#26
 CONTACT DIA. 0.020 ±0.001 REF.

WIRE VIEWS
 SEE NOTES 1 AND 2

E	PAK	07-28-10	ADDED 4, 5, 6, & 7 POSITION PATTERNS PER DOR 06-E168CS
REV.	INIT.	DATE	DESCRIPTION
ALL INFORMATION ILLUSTRATED IS THE PROPERTY OF CONNALL CORPORATION. UNAUTHORIZED DUPLICATION OR DISTRIBUTION OF THIS DOCUMENT IS PROHIBITED.			ORIG. DRAWN BY: AL DATE: 04-27-99 CHECKED BY:
ALL UNITS ARE IN FEET, INCHES, FRACTION OF INCHES AND DECIMALS. UNLESS OTHERWISE SPECIFIED TOLERANCES: 3 PLACE DECIMALS ±.005 ANGLES ±1' FRACTIONS ±1/16 ▽ = CRITICAL CHARACTERISTIC FLAG PER SPEC. XXXX			APPROVED BY: TITLE: HOLE PATTERNS MICRO-CON-X CUSTOMER:
SCALE	SIZE	SHEET	PART NUMBER: HPMCSTD
6:1	B	1 OF 1	REV. E
FILE:	DIRECTORY:	PART NUMBER: HPMCSTD	
HPMCSTD\$H1	DETAILS		



601 E. WILDWOOD VILLA PARK, IL 60181
 TITLE: HOLE PATTERNS
 MICRO-CON-X